

For Research Use Only

LENG1 Polyclonal antibody

Catalog Number: 11406-1-AP



Basic Information

Catalog Number:

11406-1-AP

Size:

150ul , Concentration: 300 ug/ml by Nanodrop and 227 ug/ml by Bradford method using BSA as the standard;

Source:

Rabbit

Isotype:

IgG

Immunogen Catalog Number:

AG1924

GenBank Accession Number:

BC014986

GeneID (NCBI):

79165

UNIPROT ID:

Q96BZ8

Full Name:

leukocyte receptor cluster (LRC)
member 1

Calculated MW:

264 aa, 31 kDa

Observed MW:

31 kDa

Purification Method:

Antigen affinity purification

Recommended Dilutions:

WB 1:500-1:1000

IHC 1:20-1:200

Applications

Tested Applications:

WB, IHC, ELISA

Species Specificity:

human

Note-IHC: suggested antigen retrieval with TE buffer pH 9.0; (*) Alternatively, antigen retrieval may be performed with citrate buffer pH 6.0

Positive Controls:

WB : human skin tissue,

IHC : human ovary tumor tissue,

Storage

Storage:

Store at -20°C. Stable for one year after shipment.

Storage Buffer:

PBS with 0.02% sodium azide and 50% glycerol pH 7.3.

Aliquoting is unnecessary for -20°C storage

*** 20ul sizes contain 0.1% BSA

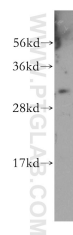
For technical support and original validation data for this product please contact:

T: 1 (888) 4PTGLAB (1-888-478-4522) (toll free in USA), or 1(312) 455-8498 (outside USA)

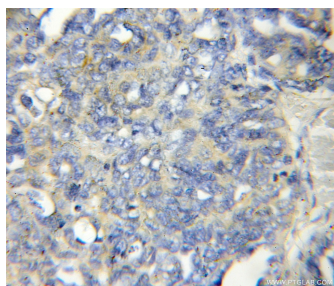
E: proteintech@ptglab.com
W: ptglab.com

This product is exclusively available under Proteintech Group brand and is not available to purchase from any other manufacturer.

Selected Validation Data



human skin tissue were subjected to SDS PAGE followed by western blot with 11406-1-AP (LENG1 antibody) at dilution of 1:500 incubated at room temperature for 1.5 hours.



Immunohistochemical analysis of paraffin-embedded human ovary tumor using 11406-1-AP (LENG1 antibody) at dilution of 1:50 (under 10x lens).