

For Research Use Only

EHD2 Polyclonal antibody

Catalog Number: 11440-1-AP

Featured Product

5 Publications



Basic Information

Catalog Number:
11440-1-AP

Size:
150ul, Concentration: 400 µg/ml by
Bradford method using BSA as the
standard;

Source:
Rabbit

Isotype:
IgG

Immunogen Catalog Number:
AG2002

GenBank Accession Number:
BC014445

GeneID (NCBI):
30846

Full Name:
EH-domain containing 2

Calculated MW:
543 aa, 61 kDa

Observed MW:
61 kDa

Purification Method:
Antigen affinity purification

Recommended Dilutions:
WB 1:1000-1:4000
IP 0.5-4.0 ug for IP and 1:500-1:1000
for WB
IHC 1:2000-1:8000

Applications

Tested Applications:
IHC, IP, WB, ELISA

Cited Applications:
IF, IHC, WB

Species Specificity:
human, mouse, rat

Cited Species:
human, mouse

**Note-IHC: suggested antigen retrieval with
TE buffer pH 9.0; (*) Alternatively, antigen
retrieval may be performed with citrate
buffer pH 6.0**

Positive Controls:

WB: HeLa cells, human heart tissue, rat heart tissue

IP: mouse heart tissue,

IHC: human breast cancer tissue, human oesophagus
cancer tissue, human ovary tumor tissue

Background Information

Notable Publications

Author	Pubmed ID	Journal	Application
Jingjing Lv	26180943	Cancer Invest	WB
Tamako Nishimura	35834519	PLoS One	IF
Chengqi Guan	33356637	Cancer Invest	IHC

Storage

Storage:

Store at -20°C. Stable for one year after shipment.

Storage Buffer:

PBS with 0.02% sodium azide and 50% glycerol pH 7.3.

Aliquoting is unnecessary for -20°C storage

*** 20ul sizes contain 0.1% BSA

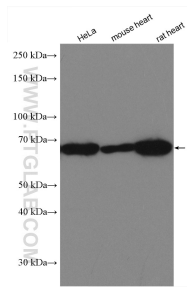
For technical support and original validation data for this product please contact:

T: 1 (888) 4PTGLAB (1-888-478-4522) (toll free
in USA), or 1(312) 455-8498 (outside USA)

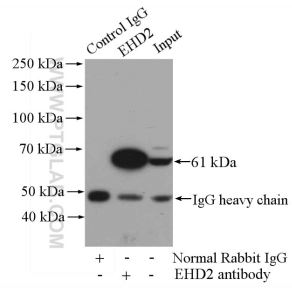
E: proteintech@ptglab.com
W: ptglab.com

This product is exclusively available under Proteintech
Group brand and is not available to purchase from any
other manufacturer.

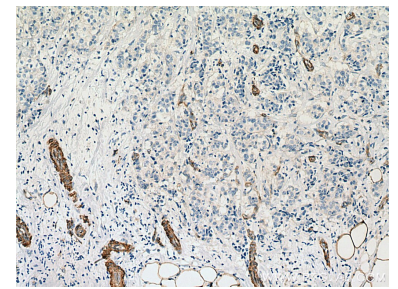
Selected Validation Data



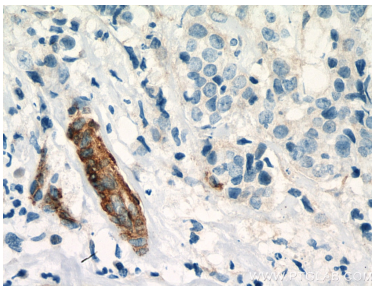
Various lysates were subjected to SDS PAGE followed by western blot with 11440-1-AP (EHD2 antibody) at dilution of 1:2000 incubated at room temperature for 1.5 hours.



IP Result of anti-EHD2 (IP:11440-1-AP, 4ug; Detection:11440-1-AP 1:800) with mouse heart tissue lysate 4000ug.



Immunohistochemical analysis of paraffin-embedded human breast cancer tissue slide using 11440-1-AP (EHD2 antibody) at dilution of 1:4000 (under 10x lens). Heat mediated antigen retrieval with Tris-EDTA buffer (pH 9.0).



Immunohistochemical analysis of paraffin-embedded human breast cancer tissue slide using 11440-1-AP (EHD2 antibody) at dilution of 1:4000 (under 40x lens). Heat mediated antigen retrieval with Tris-EDTA buffer (pH 9.0).