

For Research Use Only

COX15 Polyclonal antibody

Catalog Number: 11441-1-AP

4 Publications



Basic Information

Catalog Number:

11441-1-AP

Size:

150ul, Concentration: 600 ug/ml by Nanodrop and 327 ug/ml by Bradford method using BSA as the standard;

Source:

Rabbit

Isotype:

IgG

Immunogen Catalog Number:

AG2004

GenBank Accession Number:

BC002382

GeneID (NCBI):

1355

UNIPROT ID:

Q7KZN9

Full Name:

COX15 homolog, cytochrome c oxidase assembly protein (yeast)

Calculated MW:

410 aa, 46 kDa

Observed MW:

44-55 kDa

Purification Method:

Antigen affinity purification

Recommended Dilutions:

WB 1:1000-1:4000

IHC 1:20-1:200

Applications

Tested Applications:

WB, IHC, ELISA

Cited Applications:

WB

Species Specificity:

human, mouse, rat

Cited Species:

mouse

Positive Controls:

WB : mouse brain tissue, mouse heart tissue, rat heart tissue

IHC : human heart tissue,

Note-IHC: suggested antigen retrieval with TE buffer pH 9.0; (*) Alternatively, antigen retrieval may be performed with citrate buffer pH 6.0

Background Information

COX15 belongs to the COX15/CtaA family. It may be involved in the biosynthesis of heme A. COX15 has 2 isoforms COX15.1 and COX15.2. The MW in SDS-PAGE is between 44kd and 55kd.

Notable Publications

Author	Pubmed ID	Journal	Application
Liangjun Xia	35401830	Theranostics	WB
Qianqian Guo	31870714	Biochim Biophys Acta Mol Basis Dis	WB
Lusha Ye	38637808	J Nanobiotechnology	WB

Storage

Storage:

Store at -20°C. Stable for one year after shipment.

Storage Buffer:

PBS with 0.02% sodium azide and 50% glycerol pH 7.3.

Aliquoting is unnecessary for -20°C storage

*** 20ul sizes contain 0.1% BSA

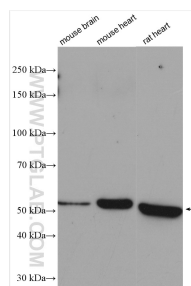
For technical support and original validation data for this product please contact:

T: 1 (888) 4PTGLAB (1-888-478-4522) (toll free in USA), or 1(312) 455-8498 (outside USA)

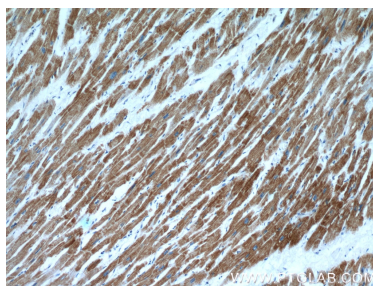
E: proteintech@ptglab.com
W: ptglab.com

This product is exclusively available under Proteintech Group brand and is not available to purchase from any other manufacturer.

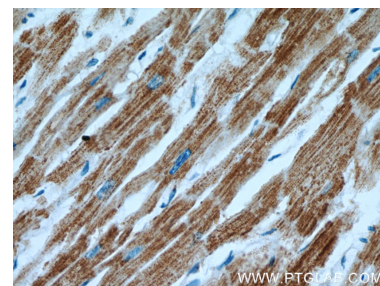
Selected Validation Data



Various lysates were subjected to SDS PAGE followed by western blot with 11441-1-AP (COX15 antibody) at dilution of 1:2000 incubated at room temperature for 1.5 hours.



Immunohistochemical analysis of paraffin-embedded human heart using 11441-1-AP (COX15 antibody) at dilution of 1:100 (under 10x lens).



Immunohistochemical analysis of paraffin-embedded human heart using 11441-1-AP (COX15 antibody) at dilution of 1:100 (under 40x lens).