

For Research Use Only

MZB1 Polyclonal antibody

Catalog Number: 11454-1-AP

7 Publications



Basic Information

Catalog Number:

11454-1-AP

Size:

150ul, Concentration: 500 ug/ml by Nanodrop;

Source:

Rabbit

Isotype:

IgG

Immunogen Catalog Number:

AG2015

GenBank Accession Number:

BC021275

GeneID (NCBI):

51237

UNIPROT ID:

Q8WU39

Full Name:

hypothetical protein MGC29506

Calculated MW:

189 aa, 21 kDa

Observed MW:

19-21 kDa

Purification Method:

Antigen affinity purification

Recommended Dilutions:

WB 1:500-1:2000

IHC 1:20-1:200

Applications

Tested Applications:

WB, IHC, ELISA

Cited Applications:

WB, IF, IHC

Species Specificity:

human

Cited Species:

human

Positive Controls:

WB : Raji cells,

IHC : human gliomas tissue, human small intestine tissue

Note-IHC: suggested antigen retrieval with TE buffer pH 9.0; (*) Alternatively, antigen retrieval may be performed with citrate buffer pH 6.0

Background Information

MZB1, also named as ,PACAP, MGC29506 and pERp1, belongs to the PERP1 family. It associates with immunoglobulin M (IgM) heavy and light chains and promotes IgM assembly and secretion. MGC29506(PACAP) may exert its effect by acting as a molecular chaperone or as an oxidoreductase as it displays a low level of oxidoreductase activity. Isoform 2 may be involved in regulation of apoptosis. (PubMed: 11350957) MZB1 has 5 isoforms with MW 21kd and 7-13kd.

Notable Publications

Author	Pubmed ID	Journal	Application
Manabu Watanabe	32963604	Oncol Lett	IHC
Kentaro Miyake	29180208	J Surg Res	IHC
Mitsuro Kanda	27459504	Int J Cancer	IHC

Storage

Storage:

Store at -20°C. Stable for one year after shipment.

Storage Buffer:

PBS with 0.02% sodium azide and 50% glycerol pH 7.3.

Aliquoting is unnecessary for -20°C storage

*** 20ul sizes contain 0.1% BSA

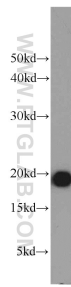
For technical support and original validation data for this product please contact:

T: 1 (888) 4PTGLAB (1-888-478-4522) (toll free in USA), or 1(312) 455-8498 (outside USA)

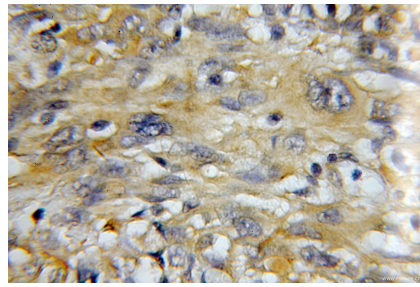
E: proteintech@ptglab.com
W: ptglab.com

This product is exclusively available under Proteintech Group brand and is not available to purchase from any other manufacturer.

Selected Validation Data



Raji cells were subjected to SDS PAGE followed by western blot with 11454-1-AP (MZB1 antibody) at dilution of 1:1000 incubated at room temperature for 1.5 hours.



Immunohistochemical analysis of paraffin-embedded human gliomas using 11454-1-AP (MZB1 antibody) at dilution of 1:50 (under 40x lens).