

For Research Use Only

PSMD5 Polyclonal antibody

Catalog Number: 11469-1-AP



Basic Information

Catalog Number: 11469-1-AP	GenBank Accession Number: BC014478	Purification Method: Antigen affinity purification
Size: 150ul , Concentration: 600 µg/ml by Nanodrop and 333 µg/ml by Bradford method using BSA as the standard;	GeneID (NCBI): 5711	Recommended Dilutions: WB 1:1000-1:8000 IP 0.5-4.0 ug for IP and 1:500-1:2000 for WB
Source: Rabbit	Full Name: proteasome (prosome, macropain) 26S subunit, non-ATPase, 5	IHC 1:20-1:200
Isotype: IgG	Calculated MW: 504 aa, 56 kDa	
Immunogen Catalog Number: AG2026	Observed MW: 50 kDa	

Applications

Tested Applications: IHC, IP, WB, ELISA	Positive Controls:
Species Specificity: human, mouse, rat	WB : HeLa cells, Jurkat cells, human liver tissue, mouse liver tissue
Note-IHC: suggested antigen retrieval with TE buffer pH 9.0; (*) Alternatively, antigen retrieval may be performed with citrate buffer pH 6.0	IP : mouse liver tissue,
	IHC : human prostate cancer tissue,

Background Information

PSMD5, also named as KIAA0072, belongs to the proteasome subunit S5B/HSM3 family. It acts as a chaperone during the assembly of the 26S proteasome, specifically of the base subcomplex of the PA700/19S regulatory complex (RC). In the initial step of the base subcomplex assembly, it is part of an intermediate PSMD5:PSMC2:PSMC1:PSMD2 module which probably assembles with a SMD10:PSMC4:PSMC5:PAAF1 module followed by dissociation of PSMD5. (PMID:15489334). This antibody is specific to PSMD5.

Storage

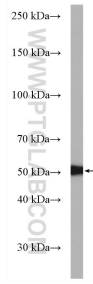
Storage:
Store at -20°C. Stable for one year after shipment.
Storage Buffer:
PBS with 0.02% sodium azide and 50% glycerol pH 7.3.
Aliquoting is unnecessary for -20°C storage

***** 20ul sizes contain 0.1% BSA**

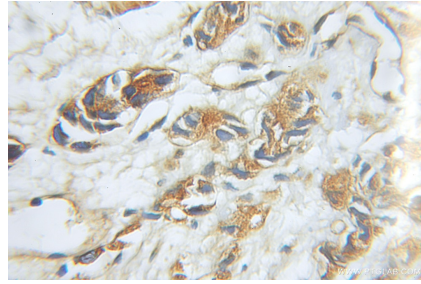
For technical support and original validation data for this product please contact:
T: 1 (888) 4PTGLAB (1-888-478-4522) (toll free in USA), or 1(312) 455-8498 (outside USA) E: proteintech@ptglab.com W: ptglab.com

This product is exclusively available under Proteintech Group brand and is not available to purchase from any other manufacturer.

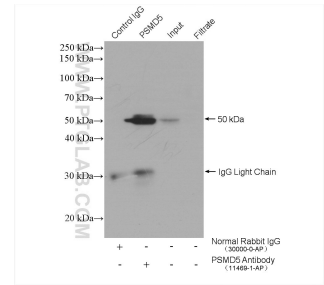
Selected Validation Data



HeLa cells were subjected to SDS PAGE followed by western blot with 11469-1-AP (PSMD5 antibody) at dilution of 1:5000 incubated at room temperature for 1.5 hours.



Immunohistochemical analysis of paraffin-embedded human prostate cancer using 11469-1-AP (PSMD5 antibody) at dilution of 1:100 (under 10x lens).



IP result of anti-PSMD5 (IP:11469-1-AP, 4ug; Detection:11469-1-AP 1:1000) with mouse liver tissue lysate 4000 ug.