

For Research Use Only

MPG Polyclonal antibody

Catalog Number: 11481-2-AP

3 Publications



Basic Information

Catalog Number:

11481-2-AP

Size:

150ul, Concentration: 133 ug/ml by Bradford method using BSA as the standard;

Source:

Rabbit

Isotype:

IgG

Immunogen Catalog Number:

AG2034

GenBank Accession Number:

BC014991

GeneID (NCBI):

4350

UNIPROT ID:

P29372

Full Name:

N-methylpurine-DNA glycosylase

Calculated MW:

293 aa, 32 kDa

Observed MW:

33 kDa

Purification Method:

Antigen affinity purification

Recommended Dilutions:

WB 1:500-1:1000

IP 0.5-4.0 ug for 1.0-3.0 mg of total protein lysate

IHC 1:20-1:200

Applications

Tested Applications:

WB, IP, IHC, ELISA

Cited Applications:

WB

Species Specificity:

human, mouse, rat

Cited Species:

human, mouse

Positive Controls:

WB : HepG2 cells, Jurkat cells, MCF-7 cells

IP : HepG2 cells,

IHC : human prostate cancer tissue,

Note-IHC: suggested antigen retrieval with TE buffer pH 9.0; (*) Alternatively, antigen retrieval may be performed with citrate buffer pH 6.0

Background Information

N-methylpurine DNA glycosylase (MPG), an initiator glycosylase of the base excision repair (BER) pathway, typically repairs alkyl-induced DNA adducts, many of which are associated with genomic instability and tumorigenic risk [PMID:22801474] MPG initiates BER by removing TMZ-induced N3-methyladenine and N7-methylguanine base lesions, leaving abasic sites (AP sites) in DNA for further processing by BER [PMID:21377995]. MPG involves in modulating the genotoxic threshold response induced by the Sn2 alkylating agent ethyl methanesulfonate (EMS) [PMID:21071726].

Notable Publications

Author	Pubmed ID	Journal	Application
Mizuki Yamamoto	25829532	J Radiat Res	WB
Xuedan Sun	32149459	EMBO Rep	WB
Bowen Li	35712126	J Oncol	WB

Storage

Storage:

Store at -20°C. Stable for one year after shipment.

Storage Buffer:

PBS with 0.02% sodium azide and 50% glycerol pH 7.3.

Aliquoting is unnecessary for -20°C storage

*** 20ul sizes contain 0.1% BSA

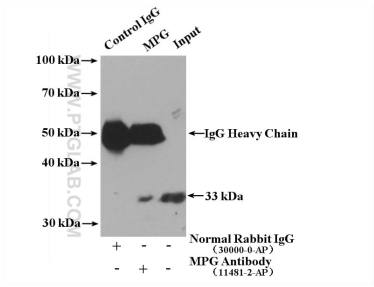
For technical support and original validation data for this product please contact:

T: 1 (888) 4PTGLAB (1-888-478-4522) (toll free in USA), or 1(312) 455-8498 (outside USA)

E: proteintech@ptglab.com
W: ptglab.com

This product is exclusively available under Proteintech Group brand and is not available to purchase from any other manufacturer.

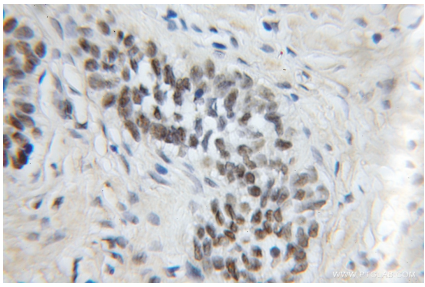
Selected Validation Data



IP result of anti-MPG (IP:11481-2-AP, 4ug; Detection:11481-2-AP 1:300) with HepG2 cells lysate 2200 ug.



HepG2 cells were subjected to SDS PAGE followed by western blot with 11481-2-AP (MPG antibody) at dilution of 1:100 incubated at room temperature for 1.5 hours.



Immunohistochemical analysis of paraffin-embedded human prostate cancer using 11481-2-AP (MPG antibody) at dilution of 1:50 (under 10x lens).