

For Research Use Only

# ASGR2 Polyclonal antibody

Catalog Number: 11501-2-AP



## Basic Information

<b>Catalog Number:</b> 11501-2-AP	<b>GenBank Accession Number:</b> BC017251	<b>Purification Method:</b> Antigen affinity purification
<b>Size:</b> 150ul, Concentration: 550 ug/ml by Nanodrop and 227 ug/ml by Bradford method using BSA as the standard;	<b>GeneID (NCBI):</b> 433	<b>Recommended Dilutions:</b> WB 1:200-1:1000
<b>Source:</b> Rabbit	<b>UNIPROT ID:</b> P07307	IP 0.5-4.0 ug for 1.0-3.0 mg of total protein lysate
<b>Isotype:</b> IgG	<b>Full Name:</b> asialoglycoprotein receptor 2	IHC 1:50-1:500
<b>Immunogen Catalog Number:</b> AG2037	<b>Calculated MW:</b> 39 kDa	
	<b>Observed MW:</b> 39 kDa	

## Applications

<b>Tested Applications:</b> WB, IHC, FC, IP, ELISA	<b>Positive Controls:</b>
<b>Species Specificity:</b> human	WB : human liver tissue,
<b>Note-IHC: suggested antigen retrieval with TE buffer pH 9.0; (*) Alternatively, antigen retrieval may be performed with citrate buffer pH 6.0</b>	IP : L02 cells,
	IHC : human liver tissue,

## Background Information

Asialoglycoprotein receptor (ASGPR), also known as the hepatic galactose/N-acetylglucosamine (GlcNAc) receptor or Ashwell receptor, is a C-type lectin expressed exclusively in hepatic parenchymal cells. ASGPR consists of two subunits, a major subunit (ASGR1, HL-1) and a minor subunit (ASGR2, HL-2), and specifically recognizes terminal  $\beta$ -linked galactose or GlcNAc on circulating glycoproteins or cells. This receptor plays a critical role in serum glycoprotein homeostasis by mediating the endocytosis and lysosomal degradation of glycoproteins that contain terminal galactose or GlcNAc residues. ASGPR may facilitate hepatic infection by multiple viruses including hepatitis B, and is also a target for liver-specific drug delivery.

## Storage

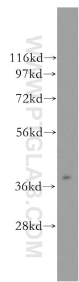
**Storage:**  
Store at -20°C. Stable for one year after shipment.  
**Storage Buffer:**  
PBS with 0.02% sodium azide and 50% glycerol pH 7.3.  
Aliquoting is unnecessary for -20°C storage

\*\*\* 20ul sizes contain 0.1% BSA

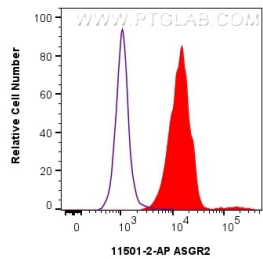
For technical support and original validation data for this product please contact:  
T: 1 (888) 4PTGLAB (1-888-478-4522) (toll free in USA), or 1(312) 455-8498 (outside USA)  
E: [proteintech@ptglab.com](mailto:proteintech@ptglab.com)  
W: [ptglab.com](http://ptglab.com)

This product is exclusively available under Proteintech Group brand and is not available to purchase from any other manufacturer.

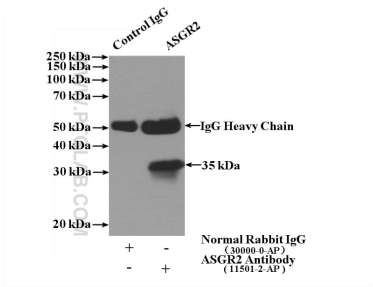
Selected Validation Data



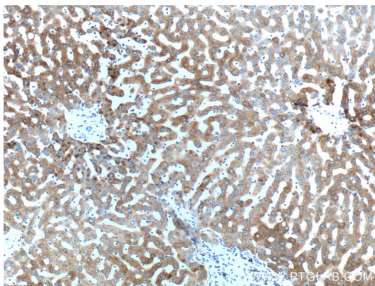
human liver tissue were subjected to SDS PAGE followed by western blot with 11501-2-AP (ASGR2 antibody) at dilution of 1:400 incubated at room temperature for 1.5 hours.



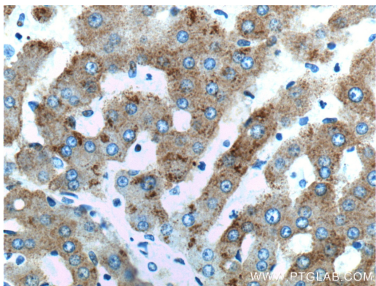
1x10<sup>6</sup> HepG2 cells were surface stained with 0.25 ug ASGR2 Polyclonal antibody (11501-2-AP) and CoraLite®488-Conjugated Goat Anti-Rabbit IgG(H+L) (SA00013-2)(red), or 0.25 ug Rabbit IgG control Rabbit PolyAb (30000-0-AP) (blue). Cells were not fixed.



IP result of anti-ASGR2 (IP:11501-2-AP, 4ug; Detection:11501-2-AP 1:300) with L02 cells lysate 1800ug.



Immunohistochemical analysis of paraffin-embedded human liver tissue slide using 11501-2-AP (ASGR2 Antibody) at dilution of 1:200 (under 10x lens).



Immunohistochemical analysis of paraffin-embedded human liver tissue slide using 11501-2-AP (ASGR2 Antibody) at dilution of 1:200 (under 40x lens).