

For Research Use Only

FRS2 Polyclonal antibody

Catalog Number: 11503-1-AP

Featured Product

11 Publications



Basic Information

Catalog Number:

11503-1-AP

Size:

150ul, Concentration: 1400 ug/ml by Nanodrop and 600 ug/ml by Bradford method using BSA as the standard;

Source:

Rabbit

Isotype:

IgG

Immunogen Catalog Number:

AG2052

GenBank Accession Number:

BC021562

GeneID (NCBI):

10818

UNIPROT ID:

Q8WU20

Full Name:

fibroblast growth factor receptor substrate 2

Calculated MW:

60 kDa

Observed MW:

68 kDa

Purification Method:

Antigen affinity purification

Recommended Dilutions:

WB 1:1000-1:4000

IHC 1:20-1:200

IF/ICC 1:50-1:500

Applications

Tested Applications:

WB, IHC, IF/ICC, ELISA

Cited Applications:

WB, IHC

Species Specificity:

human, mouse, rat

Cited Species:

human, mouse, monkey

Note-IHC: suggested antigen retrieval with TE buffer pH 9.0; (*) Alternatively, antigen retrieval may be performed with citrate buffer pH 6.0

Positive Controls:

WB : HeLa cells, SH-SY5Y cells, human brain tissue, NIH/3T3 cells, PC-3 cells

IHC : human prostate cancer tissue,

IF/ICC : PC-3 cells,

Background Information

Fibroblast growth factor (FGF) receptor substrate 2 (FRS2) has an alternative name as SNT-1, it is an adaptor protein that links activated FGF and NGF receptors to downstream signaling pathways. FGF receptor substrates (FRS2 and FRS3) are key adaptor proteins that mediate FGF-FGFR signalling in benign as well as malignant tissue. FRS2 is a 508 amino-acid protein, which is phosphorylated on tyrosine residues. The molecular weight of non-phosphorylated FRS2 is 57-68 kDa, but phosphorylated FRS2 is 80-90 kDa. Phosphorylation of FRS2 is associated with activation of a number of MAP kinases. Allele-specific regulation of FGFR2 mRNA expression with a mildly increased breast cancer risk has been reported.

Notable Publications

Author	Pubmed ID	Journal	Application
Wang Xiaoke X	21793095	Genes Chromosomes Cancer	WB
Min Shao	35271262	J Med Chem	WB
Silvana Mouron	33579347	Breast Cancer Res	WB

Storage

Storage:

Store at -20°C. Stable for one year after shipment.

Storage Buffer:

PBS with 0.02% sodium azide and 50% glycerol, pH7.3

Aliquoting is unnecessary for -20°C storage

*** 20ul sizes contain 0.1% BSA

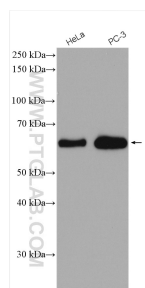
For technical support and original validation data for this product please contact:

T: 1 (888) 4PTGLAB (1-888-478-4522) (toll free in USA), or 1(312) 455-8498 (outside USA)

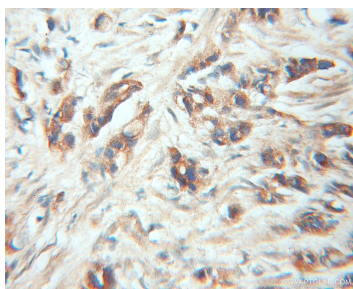
E: proteintech@ptglab.com
W: ptglab.com

This product is exclusively available under Proteintech Group brand and is not available to purchase from any other manufacturer.

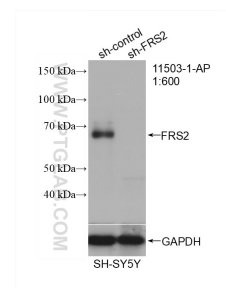
Selected Validation Data



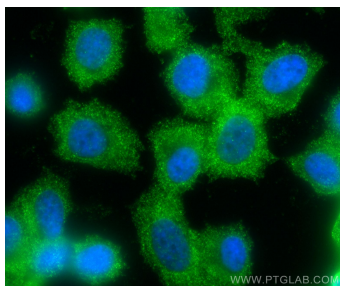
Various lysates were subjected to SDS PAGE followed by western blot with 11503-1-AP (FRS2 antibody) at dilution of 1:2000 incubated at room temperature for 1.5 hours.



Immunohistochemical analysis of paraffin-embedded human prostate cancer using 11503-1-AP (FRS2 antibody) at dilution of 1:50 (under 10x lens).



WB result of FRS2 antibody (11503-1-AP; 1:600; incubated at room temperature for 1.5 hours) with sh-Control and sh-FRS2 transfected SH-SY5Y cells.



Immunofluorescent analysis of (-20°C Ethanol) fixed PC-3 cells using FRS2 antibody (11503-1-AP) at dilution of 1:200 and CoraLite®488-Conjugated Goat Anti-Rabbit IgG(H+L) (SA00013-2).