

For Research Use Only

# PTP4A1/PRL1 Polyclonal antibody

Catalog Number: 11508-1-AP

Featured Product

7 Publications



## Basic Information

### Catalog Number:

11508-1-AP

### Size:

150ul, Concentration: 300 ug/ml by Nanodrop and 233 ug/ml by Bradford method using BSA as the standard;

### Source:

Rabbit

### Isotype:

IgG

### Immunogen Catalog Number:

AG2067

### GenBank Accession Number:

BC023975

### GeneID (NCBI):

7803

### UNIPROT ID:

Q93096

### Full Name:

protein tyrosine phosphatase type IVA, member 1

### Calculated MW:

20 kDa

### Observed MW:

18-20 kDa

### Purification Method:

Antigen affinity purification

### Recommended Dilutions:

WB 1:500-1:1000

IHC 1:50-1:500

## Applications

### Tested Applications:

WB, IHC, ELISA

### Cited Applications:

WB, IHC

### Species Specificity:

human, mouse

### Cited Species:

human, mouse

### Positive Controls:

WB : MCF-7 cells, HeLa cells, HepG2 cells

IHC : human pancreas cancer tissue,

**Note-IHC: suggested antigen retrieval with TE buffer pH 9.0; (\*) Alternatively, antigen retrieval may be performed with citrate buffer pH 6.0**

## Background Information

PTP4A1 (protein tyrosine phosphatase type IVA, member 1), also named as PRL1, HH72, PRL-1, PTP(CAAX1), PTPCAAX1, DKFZp779M0721, belongs to the protein-tyrosine phosphatase family, which play an important role in maintaining appropriate tyrosine phosphorylation levels in the cell during development and tissue regeneration (PMID:19341304). PTP4A1 is a PTPase and that it is highly expressed in growing hepatic cells and some tumor cell lines and is located primarily in the cell nucleus, and its overexpression modulates the growth of cells (PMID:8196618). PTP4A1 can exist as dimer, trimer and higher oligomers in vivo (PMID: 15571731, 18224294).

## Notable Publications

Author	Pubmed ID	Journal	Application
Chang Zhou	26722251	Oncol Lett	WB
Zhou Chang C	23696794	PLoS One	WB
Jessica Yun	35020952	Int J Cancer	WB, IHC

## Storage

### Storage:

Store at -20°C. Stable for one year after shipment.

### Storage Buffer:

PBS with 0.02% sodium azide and 50% glycerol pH 7.3.

Aliquoting is unnecessary for -20°C storage

\*\*\* 20ul sizes contain 0.1% BSA

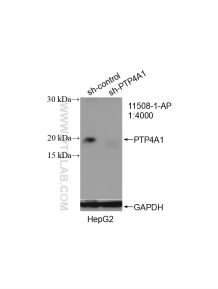
For technical support and original validation data for this product please contact:

T: 1 (888) 4PTGLAB (1-888-478-4522) (toll free in USA), or 1(312) 455-8498 (outside USA)

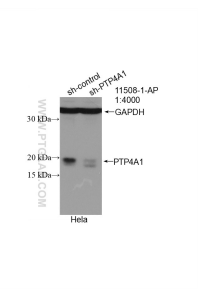
E: [proteintech@ptglab.com](mailto:proteintech@ptglab.com)  
W: [ptglab.com](http://ptglab.com)

This product is exclusively available under Proteintech Group brand and is not available to purchase from any other manufacturer.

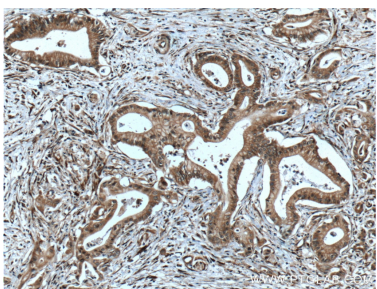
Selected Validation Data



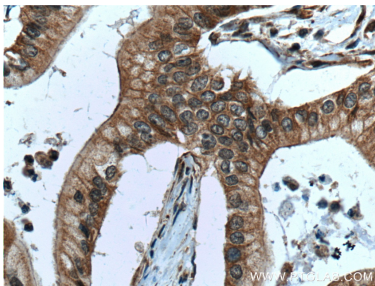
WB result of PTP4A1/PRL1 antibody (11508-1-AP; 1:4000; incubated at room temperature for 1.5 hours) with sh-Control and sh-PTP4A1/PRL1 transfected HepG2 cells.



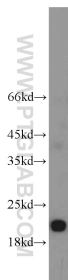
WB result of PTP4A1/PRL1 antibody (11508-1-AP; 1:4000; incubated at room temperature for 1.5 hours) with sh-Control and sh-PTP4A1/PRL1 transfected HeLa cells.



Immunohistochemical analysis of paraffin-embedded human pancreas cancer tissue slide using 11508-1-AP (PTP4A1/PRL1 antibody) at dilution of 1:100 (under 10x lens. Heat mediated antigen retrieval with Tris-EDTA buffer (pH 9.0).



Immunohistochemical analysis of paraffin-embedded human pancreas cancer tissue slide using 11508-1-AP (PTP4A1/PRL1 antibody) at dilution of 1:100 (under 40x lens. Heat mediated antigen retrieval with Tris-EDTA buffer (pH 9.0).



MCF7 cells were subjected to SDS PAGE followed by western blot with 11508-1-AP (PTP4A1/PRL1 antibody) at dilution of 1:800 incubated at room temperature for 1.5 hours.