

For Research Use Only

LRRC8D Polyclonal antibody

Catalog Number: 11537-1-AP **2 Publications**



Basic Information

Catalog Number: 11537-1-AP	GenBank Accession Number: BC024159	Purification Method: Antigen affinity purification
Size: 150ul, Concentration: 550 µg/ml by Nanodrop and 333 µg/ml by Bradford method using BSA as the standard;	GeneID (NCBI): 55144	Recommended Dilutions: WB 1:500-1:2000 IHC 1:50-1:500 IF 1:50-1:500
Source: Rabbit	Full Name: leucine rich repeat containing 8 family, member D	
Isotype: IgG	Calculated MW: 858 aa, 98 kDa	
Immunogen Catalog Number: AG2138	Observed MW: 98-120 kDa	

Applications

Tested Applications: IF, IHC, WB, ELISA	Positive Controls: WB: mouse brain tissue, HEK-293 cells
Cited Applications: IHC, WB	IHC: human brain tissue,
Species Specificity: human, mouse, rat	IF: HeLa cells,
Cited Species: human	

Note-IHC: suggested antigen retrieval with TE buffer pH 9.0; (*) Alternatively, antigen retrieval may be performed with citrate buffer pH 6.0

Background Information

LRRC8D (or LRRC5L) gene encodes a 98-kDa multi-pass membrane protein leucine-rich repeat-containing protein 8D, which contains 13 LRRs (leucine-rich repeats). The molecular function of this protein is so far not well understood. Recently, LRRC8D gene was found to be up-regulated after IL-2 deprivation in immortalised Interleukin-2(IL-2)-dependent human T cells, indicating a possible involvement of LRRC8D in cancer development. This LRRC8D antibody can't cross-recognize LRRC8A.

Notable Publications

Author	Pubmed ID	Journal	Application
Magdalena Jahn	33596608	Cell Physiol Biochem	IHC
Greta Pintacuda	36950384	Cell Genom	WB

Storage

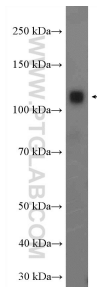
Storage:
Store at -20°C. Stable for one year after shipment.
Storage Buffer:
PBS with 0.02% sodium azide and 50% glycerol pH 7.3.
Aliquoting is unnecessary for -20°C storage

***** 20ul sizes contain 0.1% BSA**

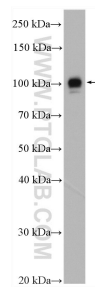
For technical support and original validation data for this product please contact:
T: 1 (888) 4PTGLAB (1-888-478-4522) (toll free in USA), or 1(312) 455-8498 (outside USA) E: proteintech@ptglab.com W: ptglab.com

This product is exclusively available under Proteintech Group brand and is not available to purchase from any other manufacturer.

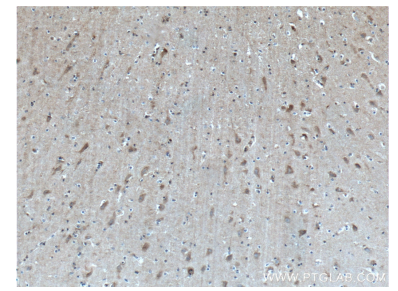
Selected Validation Data



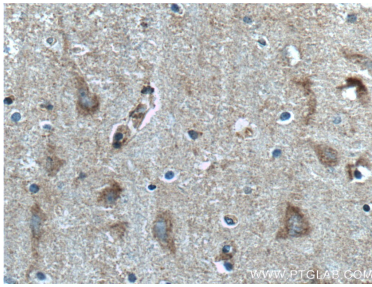
mouse brain tissue were subjected to SDS PAGE followed by western blot with 11537-1-AP (LRRC8D antibody) at dilution of 1:1000 incubated at room temperature for 1.5 hours.



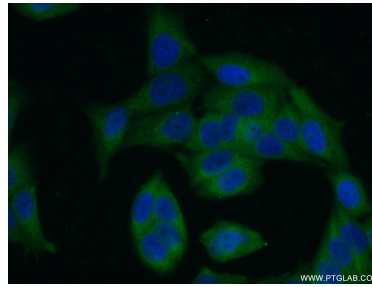
HEK-293 cells were subjected to SDS PAGE followed by western blot with 11537-1-AP (LRRC8D antibody) at dilution of 1:600 incubated at room temperature for 1.5 hours.



Immunohistochemical analysis of paraffin-embedded human brain tissue slide using 11537-1-AP (LRRC8D antibody) at dilution of 1:200 (under 10x lens. Heat mediated antigen retrieval with Tris-EDTA buffer (pH 9.0).



Immunohistochemical analysis of paraffin-embedded human brain tissue slide using 11537-1-AP (LRRC8D antibody) at dilution of 1:200 (under 40x lens. Heat mediated antigen retrieval with Tris-EDTA buffer (pH 9.0).



Immunofluorescent analysis of (-20°C Ethanol) fixed HeLa cells using 11537-1-AP (LRRC8D antibody) at dilution of 1:50 and Alexa Fluor 488-conjugated AffiniPure Goat Anti-Rabbit IgG(H+L).