

For Research Use Only

# PLAGL2 Polyclonal antibody

Catalog Number: 11540-1-AP

Featured Product

12 Publications



## Basic Information

Catalog Number:

11540-1-AP

Size:

150ul, Concentration: 450 ug/ml by Nanodrop;

Source:

Rabbit

Isotype:

IgG

Immunogen Catalog Number:

AG2137

GenBank Accession Number:

BC023655

GeneID (NCBI):

5326

UNIPROT ID:

Q9UPG8

Full Name:

pleiomorphic adenoma gene-like 2

Calculated MW:

496 aa, 55 kDa

Observed MW:

50-55 kDa, 70 kDa

Purification Method:

Antigen affinity purification

Recommended Dilutions:

WB 1:1000-1:4000

## Applications

Tested Applications:

WB, ELISA

Cited Applications:

WB, IP, IF, IHC, ChIP

Species Specificity:

human, mouse

Cited Species:

human, mouse

Positive Controls:

WB: Raji cells, mouse kidney tissue

## Background Information

PLAGL2, also named KIAA0198, belongs to the krueppel C2H2-type zinc-finger protein family. It shows weak transcriptional activatory activity. PLAGL2, a proto-oncogene, is implicated in a variety of cancers including acute myeloid leukemia (AML), malignant glioma, colon cancer, and lung adenocarcinoma. PLAGL2 can function as a tumor suppressor by initiating cell cycle arrest and apoptosis. The calculated molecular weight of PLAGL2 is 55 kDa, but the SUMO1-modified form is 68 kDa (PMID: 30535429).

## Notable Publications

Author	Pubmed ID	Journal	Application
Kari R. Fischer	36399309	Genes Genomics	WB,IF
Liang Wu	30822775	Pediatr Res	WB,IHC
Daojiang Li	31279780	EBioMedicine	WB,IHC,IF

## Storage

Storage:

Store at -20°C. Stable for one year after shipment.

Storage Buffer:

PBS with 0.02% sodium azide and 50% glycerol pH 7.3.

Aliquoting is unnecessary for -20°C storage

\*\*\* 20ul sizes contain 0.1% BSA

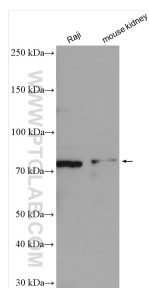
For technical support and original validation data for this product please contact:

T: 1 (888) 4PTGLAB (1-888-478-4522) (toll free in USA), or 1(312) 455-8498 (outside USA)

E: [proteintech@ptglab.com](mailto:proteintech@ptglab.com)  
W: [ptglab.com](http://ptglab.com)

This product is exclusively available under Proteintech Group brand and is not available to purchase from any other manufacturer.

## Selected Validation Data



Various lysates were subjected to SDS PAGE followed by western blot with 11540-1-AP (PLAGL2 antibody) at dilution of 1:2000 incubated at room temperature for 1.5 hours.