

For Research Use Only

# Cyclin E1 Polyclonal antibody

Catalog Number: 11554-1-AP

Featured Product

327 Publications



## Basic Information

### Catalog Number:

11554-1-AP

### Size:

150ul, Concentration: 550 ug/ml by Nanodrop;

### Source:

Rabbit

### Isotype:

IgG

### Immunogen Catalog Number:

AG2110

### GenBank Accession Number:

BC035498

### GeneID (NCBI):

898

### UNIPROT ID:

P24864

### Full Name:

cyclin E1

### Calculated MW:

410 aa, 47 kDa

### Observed MW:

47 kDa

### Purification Method:

Antigen affinity purification

### Recommended Dilutions:

WB 1:500-1:2000

IP 0.5-4.0 ug for 1.0-3.0 mg of total protein lysate

IHC 1:400-1:1600

## Applications

### Tested Applications:

WB, IHC, FC (Intra), IP, ELISA

### Cited Applications:

WB, IHC, IF, ColP

### Species Specificity:

human, mouse

### Cited Species:

human, mouse, rat, pig, zebrafish, artemia sinica

**Note-IHC: suggested antigen retrieval with TE buffer pH 9.0; (\*) Alternatively, antigen retrieval may be performed with citrate buffer pH 6.0**

### Positive Controls:

**WB** : HT-29 cells, NIH/3T3 cells, mouse heart tissue, HeLa cells, Jurkat cells, human lung tissue, MCF-7 cells, HepG2 cells, K-562 cells, human placenta tissue

**IP** : HeLa cells,

**IHC** : mouse testis tissue, human placenta tissue

## Background Information

Cyclin E1 (CCNE1) is a member of the highly conserved cyclin family, whose members are characterized by a dramatic periodicity in protein abundance through the cell cycle. CCNE1, an essential cyclin activating Cdk2, regulates the G1-S phase transition of the mammalian cell division cycle. Its timing expression plays a direct role in the initiation of DNA replication, the control of histone biosynthesis, and the centrosome cycle. CCNE1 is associated with disease progression in various malignancies and is associated clinically with poor prognosis. Two bands of Cyclin E1 were expressed in U2OS and MDA-MB-231 cells (PMID:9858585, PMID: 24112607).

## Notable Publications

Author	Pubmed ID	Journal	Application
Yong Zhu	34660260	Front Oncol	WB
Yong-Li Zhang	34679694	Antioxidants (Basel)	WB
Hao Yang	27708221	Oncotarget	WB

## Storage

### Storage:

Store at -20°C. Stable for one year after shipment.

### Storage Buffer:

PBS with 0.02% sodium azide and 50% glycerol, pH7.3

Aliquoting is unnecessary for -20°C storage

\*\*\* 20ul sizes contain 0.1% BSA

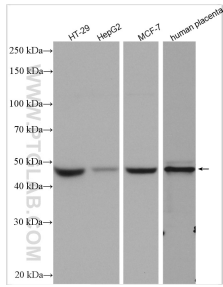
For technical support and original validation data for this product please contact:

T: 1 (888) 4PTGLAB (1-888-478-4522) (toll free in USA), or 1(312) 455-8498 (outside USA)

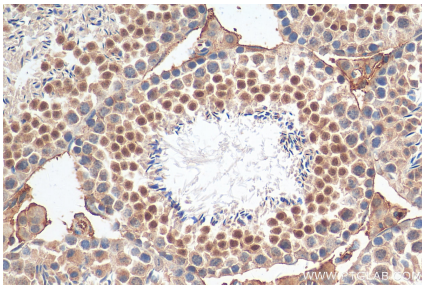
E: [proteintech@ptglab.com](mailto:proteintech@ptglab.com)  
W: [ptglab.com](http://ptglab.com)

This product is exclusively available under Proteintech Group brand and is not available to purchase from any other manufacturer.

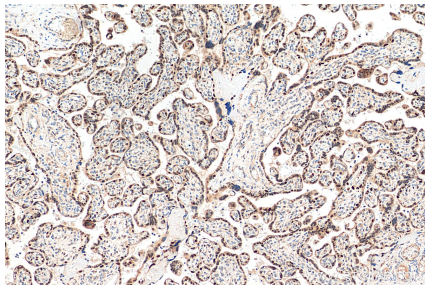
Selected Validation Data



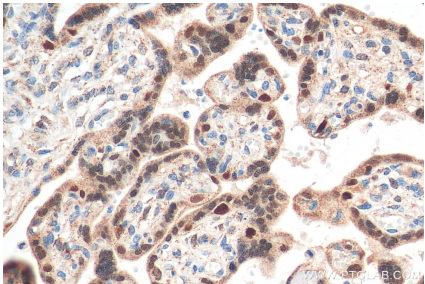
Various lysates were subjected to SDS PAGE followed by western blot with 11554-1-AP (Cyclin E1 antibody) at dilution of 1:1000 incubated at room temperature for 1.5 hours.



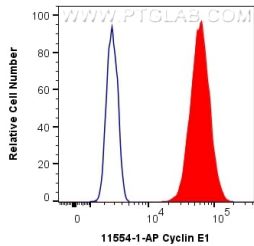
Immunohistochemical analysis of paraffin-embedded mouse testis tissue slide using 11554-1-AP (Cyclin E1 antibody) at dilution of 1:800 (under 40x lens). Heat mediated antigen retrieval with Tris-EDTA buffer (pH 9.0).



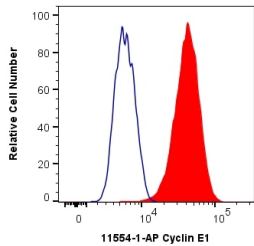
Immunohistochemical analysis of paraffin-embedded human placenta tissue slide using 11554-1-AP (Cyclin E1 antibody) at dilution of 1:800 (under 10x lens). Heat mediated antigen retrieval with Tris-EDTA buffer (pH 9.0).



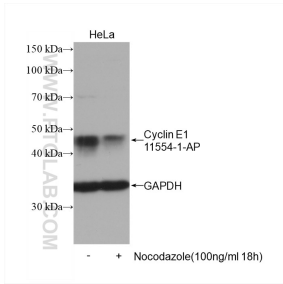
Immunohistochemical analysis of paraffin-embedded human placenta tissue slide using 11554-1-AP (Cyclin E1 antibody) at dilution of 1:800 (under 40x lens). Heat mediated antigen retrieval with Tris-EDTA buffer (pH 9.0).



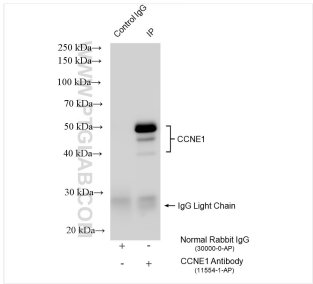
1X10<sup>6</sup> MCF-7 cells were intracellularly stained with 0.4 ug Anti-Human Cyclin E1 (11554-1-AP) and CoraLite®488-Conjugated AffiniPure Goat Anti-Rabbit IgG(H+L) at dilution 1:1000 (red), or 0.4 ug Isotype Control. Cells were fixed and permeabilized with Transcription Factor Staining Buffer Kit (PF00011).



1X10<sup>6</sup> HeLa cells were intracellularly stained with 0.4 ug Anti-Human Cyclin E1 (11554-1-AP) and CoraLite®488-Conjugated AffiniPure Goat Anti-Rabbit IgG(H+L) at dilution 1:1000 (red), or 0.4 ug Isotype Control. Cells were fixed and permeabilized with Transcription Factor Staining Buffer Kit (PF00011).



Non-treated HeLa and nocodazole treated HeLa cells were subjected to SDS PAGE followed by western blot with 11554-1-AP (Cyclin E1 antibody) at dilution of 1:1200 incubated at room temperature for 1.5 hours. The membrane was stripped and re-blotted with GAPDH antibody as loading control.



IP result of anti-Cyclin E1 (IP:11554-1-AP, 4ug; Detection:11554-1-AP 1:2000) with HeLa cells lysate 1600 ug.