

For Research Use Only

# GTPBP2 Polyclonal antibody

Catalog Number: 11557-1-AP



## Basic Information

<b>Catalog Number:</b> 11557-1-AP	<b>GenBank Accession Number:</b> BC028347	<b>Purification Method:</b> Antigen affinity purification
<b>Size:</b> 150ul , Concentration: 300 µg/ml by Nanodrop and 267 µg/ml by Bradford method using BSA as the standard;	<b>GeneID (NCBI):</b> 54676	<b>Recommended Dilutions:</b> WB 1:500-1:2000 IP 0.5-4.0 ug for IP and 1:200-1:1000 for WB
<b>Source:</b> Rabbit	<b>Full Name:</b> GTP binding protein 2	<b>Calculated MW:</b> 602 aa, 66 kDa
<b>Isotype:</b> IgG	<b>Observed MW:</b> 60 kDa	<b>IHC 1:50-1:500</b>
<b>Immunogen Catalog Number:</b> AG2113		

## Applications

### Tested Applications:

IHC, IP, WB, ELISA

### Species Specificity:

human, mouse

**Note-IHC: suggested antigen retrieval with TE buffer pH 9.0; (\*) Alternatively, antigen retrieval may be performed with citrate buffer pH 6.0**

### Positive Controls:

WB : human kidney tissue, human spleen tissue

IP : mouse spleen tissue,

IHC : human pancreas tissue,

## Background Information

### Storage

#### Storage:

Store at -20°C. Stable for one year after shipment.

#### Storage Buffer:

PBS with 0.02% sodium azide and 50% glycerol pH 7.3.

Aliquoting is unnecessary for -20°C storage

\*\*\* 20ul sizes contain 0.1% BSA

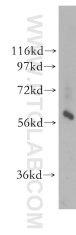
For technical support and original validation data for this product please contact:

T: 1 (888) 4PTGLAB (1-888-478-4522) (toll free in USA), or 1(312) 455-8498 (outside USA)

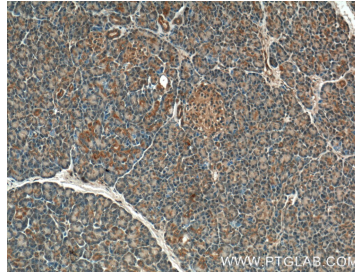
E: proteintech@ptglab.com  
W: ptglab.com

This product is exclusively available under Proteintech Group brand and is not available to purchase from any other manufacturer.

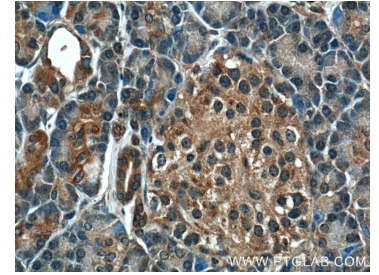
## Selected Validation Data



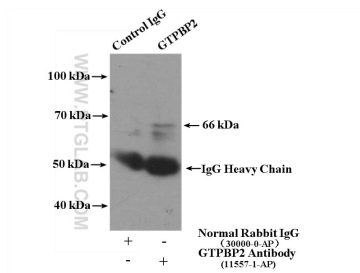
human kidney tissue were subjected to SDS PAGE followed by western blot with 11557-1-AP (GTPBP2 antibody) at dilution of 1:200 incubated at room temperature for 1.5 hours.



Immunohistochemical analysis of paraffin-embedded human pancreas tissue slide using 11557-1-AP (GTPBP2 Antibody) at dilution of 1:200 (under 10x lens).



Immunohistochemical analysis of paraffin-embedded human pancreas tissue slide using 11557-1-AP (GTPBP2 Antibody) at dilution of 1:200 (under 40x lens).



IP Result of anti-GTPBP2 (IP:11557-1-AP, 4ug; Detection:11557-1-AP 1:300) with mouse spleen tissue lysate 4000ug.