

For Research Use Only

# SRP68 Polyclonal antibody

Catalog Number: 11585-1-AP

Featured Product

9 Publications



## Basic Information

### Catalog Number:

11585-1-AP

### Size:

150ul, Concentration: 800 ug/ml by Nanodrop and 400 ug/ml by Bradford method using BSA as the standard;

### Source:

Rabbit

### Isotype:

IgG

### Immunogen Catalog Number:

AG2177

### GenBank Accession Number:

BC020238

### GeneID (NCBI):

6730

### UNIPROT ID:

Q9UHB9

### Full Name:

signal recognition particle 68kDa

### Calculated MW:

68 kDa

### Observed MW:

68 kDa

### Purification Method:

Antigen affinity purification

### Recommended Dilutions:

WB 1:500-1:2000

IP 0.5-4.0 ug for 1.0-3.0 mg of total protein lysate

IHC 1:50-1:500

IF/ICC 1:200-1:800

## Applications

### Tested Applications:

WB, IHC, IF/ICC, IP, ELISA

### Cited Applications:

WB

### Species Specificity:

human, mouse, rat

### Cited Species:

human, mouse

**Note-IHC: suggested antigen retrieval with TE buffer pH 9.0; (\*) Alternatively, antigen retrieval may be performed with citrate buffer pH 6.0**

### Positive Controls:

WB : mouse brain tissue, human brain tissue

IP : mouse kidney tissue,

IHC : human gliomas tissue, rat testis tissue

IF/ICC : HepG2 cells,

## Background Information

The signal recognition particle (SRP) is a ribonucleoprotein complex that mediates the targeting of secretory proteins to the rough endoplasmic reticulum (ER) membrane. This ribonucleoprotein complex might interact directly with the docking protein in the ER membrane and possibly participate in the elongation arrest function. SRP68 is one component of the ribonucleoprotein complex, and forms a heterodimer with SRP72.

## Notable Publications

Author	Pubmed ID	Journal	Application
Mehdi Pirouz	32457326	Nat Commun	WB
Joseph Russo	28129347	PLoS One	WB
Piazzon Nathalie N	23221635	Nucleic Acids Res	WB

## Storage

### Storage:

Store at -20°C. Stable for one year after shipment.

### Storage Buffer:

PBS with 0.02% sodium azide and 50% glycerol pH 7.3.

Aliquoting is unnecessary for -20°C storage

\*\*\* 20ul sizes contain 0.1% BSA

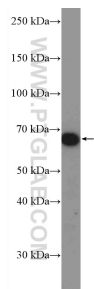
For technical support and original validation data for this product please contact:

T: 1 (888) 4PTGLAB (1-888-478-4522) (toll free in USA), or 1(312) 455-8498 (outside USA)

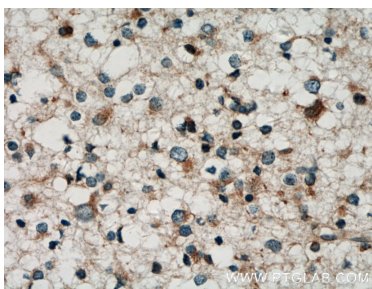
E: [proteintech@ptglab.com](mailto:proteintech@ptglab.com)  
W: [ptglab.com](http://ptglab.com)

This product is exclusively available under Proteintech Group brand and is not available to purchase from any other manufacturer.

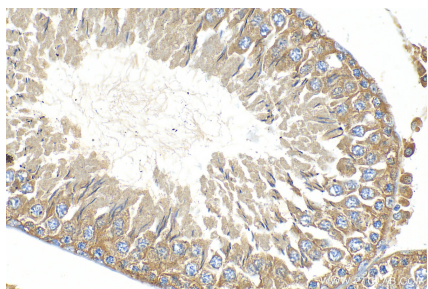
## Selected Validation Data



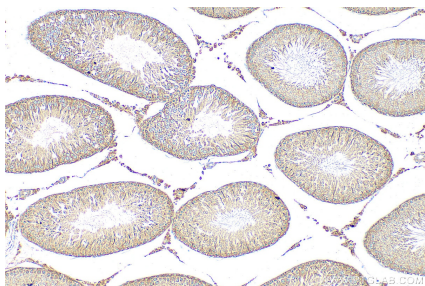
mouse brain tissue were subjected to SDS PAGE followed by western blot with 11585-1-AP (SRP68 antibody) at dilution of 1:1000 incubated at room temperature for 1.5 hours.



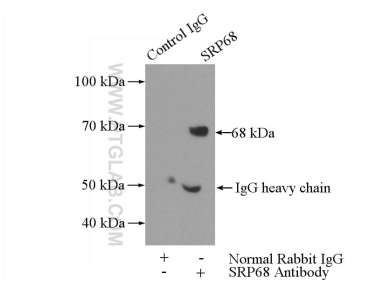
Immunohistochemical analysis of paraffin-embedded human gliomas tissue slide using 11585-1-AP (SRP68 antibody) at dilution of 1:200 (under 40x lens. Heat mediated antigen retrieval with Tris-EDTA buffer (pH 9.0).



Immunohistochemical analysis of paraffin-embedded rat testis tissue slide using 11585-1-AP (SRP68 antibody) at dilution of 1:200 (under 40x lens). Heat mediated antigen retrieval with Tris-EDTA buffer (pH 9.0).



Immunohistochemical analysis of paraffin-embedded rat testis tissue slide using 11585-1-AP (SRP68 antibody) at dilution of 1:200 (under 10x lens). Heat mediated antigen retrieval with Tris-EDTA buffer (pH 9.0).



IP result of anti-SRP68 (IP:11585-1-AP, 4ug; Detection:11585-1-AP 1:400) with mouse kidney tissue lysate 4000ug.



Immunofluorescent analysis of (-20°C Methanol) fixed HepG2 cells using SRP68 antibody (11585-1-AP) at dilution of 1:400 and CoraLite®488-Conjugated AffiniPure Goat Anti-Rabbit IgG(H+L).