

For Research Use Only

# IFI30 Polyclonal antibody

Catalog Number: 11597-1-AP

Featured Product

2 Publications



## Basic Information

<b>Catalog Number:</b> 11597-1-AP	<b>GenBank Accession Number:</b> BC021136	<b>Purification Method:</b> Antigen affinity purification
<b>Size:</b> 150ul , Concentration: 450 µg/ml by Nanodrop and 300 µg/ml by Bradford method using BSA as the standard;	<b>GeneID (NCBI):</b> 10437	<b>Recommended Dilutions:</b> WB 1:2000-1:12000 IP 0.5-4.0 ug for IP and 1:1000-1:6000 for WB
<b>Source:</b> Rabbit	<b>Full Name:</b> interferon, gamma-inducible protein 30	<b>IHC 1:2000-1:8000</b> <b>IF 1:50-1:500</b>
<b>Isotype:</b> IgG	<b>Calculated MW:</b> 261 aa, 29 kDa	
<b>Immunogen Catalog Number:</b> AG2178	<b>Observed MW:</b> 29 kDa	

## Applications

**Tested Applications:**  
IF, IHC, IP, WB, ELISA

**Cited Applications:**  
IHC, WB

**Species Specificity:**  
human

**Cited Species:**  
human

**Note-IHC: suggested antigen retrieval with TE buffer pH 9.0; (\*) Alternatively, antigen retrieval may be performed with citrate buffer pH 6.0**

**Positive Controls:**

**WB :** COLO 320 cells,

**IP :** COLO 320 cells,

**IHC :** human liver cancer tissue,

**IF :** HeLa cells,

## Background Information

IFI30(interferon, gamma-inducible protein 30) is also named as IP30, GILT, IFI-30, MGC32056, IFI30 and belongs to the GILT family. It can facilitate the processing and presentation to antigen-specific T cells of protein antigens containing disulfide bonds. IFI30 is inducibly up-regulated by IFN-g, as are MHC class II molecules, the associated invariant chain, and HLA-DM, which catalyses peptide loading in MHCs and the 35 kDa species is the IFI30 proform, and the 30-kDa species is the mature form(PMID:10639150). It can exist as a dimer(PMID:17142755).

## Notable Publications

Author	Pubmed ID	Journal	Application
Yan Fan	34400904	Int J Med Sci	WB,IHC
Menglin Chen	37270969	Phytomedicine	WB

## Storage

**Storage:**

Store at -20°C. Stable for one year after shipment.

**Storage Buffer:**

PBS with 0.02% sodium azide and 50% glycerol pH 7.3.

Aliquoting is unnecessary for -20°C storage

\*\*\* 20ul sizes contain 0.1% BSA

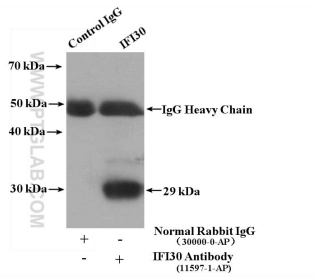
For technical support and original validation data for this product please contact:

T: 1 (888) 4PTGLAB (1-888-478-4522) (toll free in USA), or 1(312) 455-8498 (outside USA)

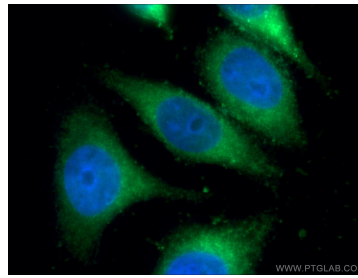
E: proteintech@ptglab.com  
W: ptglab.com

This product is exclusively available under Proteintech Group brand and is not available to purchase from any other manufacturer.

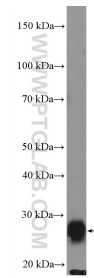
## Selected Validation Data



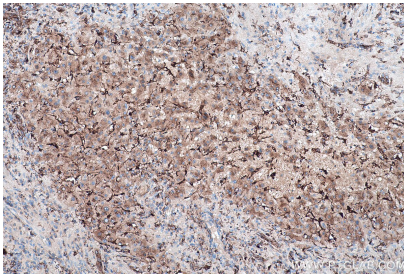
IP result of anti-IFI30 (IP:11597-1-AP, 4 $\mu$ g; Detection:11597-1-AP 1:3000) with COLO 320 cells lysate 2400  $\mu$ g.



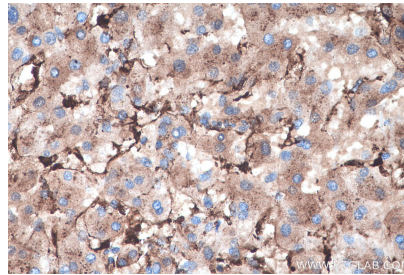
Immunofluorescent analysis of (-20°C Ethanol) fixed HeLa cells using 11597-1-AP (IFI30 antibody) at dilution of 1:100 and Alexa Fluor 488-conjugated AffiniPure Goat Anti-Rabbit IgG(H+L).



COLO 320 cells were subjected to SDS PAGE followed by western blot with 11597-1-AP (IFI30 Antibody) at dilution of 1:6000 incubated at 4 degree celsius over night.



Immunohistochemical analysis of paraffin-embedded human liver cancer tissue slide using 11597-1-AP (IFI30 antibody) at dilution of 1:4000 (under 10x lens). Heat mediated antigen retrieval with Tris-EDTA buffer (pH 9.0).



Immunohistochemical analysis of paraffin-embedded human liver cancer tissue slide using 11597-1-AP (IFI30 antibody) at dilution of 1:4000 (under 40x lens). Heat mediated antigen retrieval with Tris-EDTA buffer (pH 9.0).