

For Research Use Only

# C1QA Polyclonal antibody

Catalog Number: 11602-1-AP

12 Publications



## Basic Information

### Catalog Number:

11602-1-AP

### Size:

150ul, Concentration: 350 ug/ml by Nanodrop and 227 ug/ml by Bradford method using BSA as the standard;

### Source:

Rabbit

### Isotype:

IgG

### Immunogen Catalog Number:

AG2141

### GenBank Accession Number:

BC030153

### GeneID (NCBI):

712

### UNIPROT ID:

P02745

### Full Name:

complement component 1, q subcomponent, A chain

### Calculated MW:

245 aa, 26 kDa

### Observed MW:

26-30 kDa

### Purification Method:

Antigen affinity purification

### Recommended Dilutions:

WB 1:1000-1:8000

IF/ICC 1:50-1:500

## Applications

### Tested Applications:

WB, IF/ICC, ELISA

### Cited Applications:

WB, IF

### Species Specificity:

human

### Cited Species:

human

### Positive Controls:

WB : human plasma, human colon tissue, human heart tissue, human liver tissue, human lung tissue, human spleen tissue

IF/ICC : HepG2 cells,

## Background Information

The first component of complement, C1, is a calcium-dependent complex of the 3 subcomponents C1q, C1r, and C1s. C1q is composed of 18 polypeptide chains: six A-chains, six B-chains, and six C-chains. Each chain contains a collagen-like region located near the N terminus and a C-terminal globular region. Deficiency of C1q has been associated with lupus erythematosus and glomerulonephritis. This antibody is raised against C1qA which is the A-chain polypeptide of human complement subcomponent C1q.

## Notable Publications

Author	Pubmed ID	Journal	Application
Yongyun Li	34536440	J Mol Cell Cardiol	IF
Fei Shen	34691256	Oncol Lett	WB
Anika Alberts	32286427	Sci Rep	WB

## Storage

### Storage:

Store at -20°C. Stable for one year after shipment.

### Storage Buffer:

PBS with 0.02% sodium azide and 50% glycerol, pH7.3

Aliquoting is unnecessary for -20°C storage

\*\*\* 20ul sizes contain 0.1% BSA

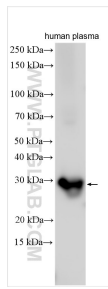
For technical support and original validation data for this product please contact:

T: 1 (888) 4PTGLAB (1-888-478-4522) (toll free in USA), or 1(312) 455-8498 (outside USA)

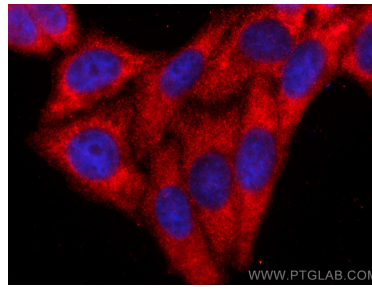
E: [proteintech@ptglab.com](mailto:proteintech@ptglab.com)  
W: [ptglab.com](http://ptglab.com)

This product is exclusively available under Proteintech Group brand and is not available to purchase from any other manufacturer.

## Selected Validation Data



human plasma was subjected to SDS PAGE followed by western blot with 11602-1-AP (C1qA antibody) at dilution of 1:4000 incubated at room temperature for 1.5 hours.



Immunofluorescent analysis of (-20°C Ethanol) fixed HepG2 cells using C1QA antibody (11602-1-AP) at dilution of 1:200 and CoraLite® 594-Conjugated Goat Anti-Rabbit IgG(H+L) (SA00013-4).