

For Research Use Only

# CPSF3 Polyclonal antibody

Catalog Number: 11609-1-AP

Featured Product

6 Publications



## Basic Information

### Catalog Number:

11609-1-AP

### Size:

150ul, Concentration: 300 ug/ml by Nanodrop and 267 ug/ml by Bradford method using BSA as the standard;

### Source:

Rabbit

### Isotype:

IgG

### Immunogen Catalog Number:

AG2173

### GenBank Accession Number:

BC020211

### GeneID (NCBI):

51692

### UNIPROT ID:

Q9UKF6

### Full Name:

cleavage and polyadenylation specific factor 3, 73kDa

### Calculated MW:

684 aa, 77 kDa

### Observed MW:

77 kDa

### Purification Method:

Antigen affinity purification

### Recommended Dilutions:

WB 1:1000-1:4000

IP 0.5-4.0 ug for 1.0-3.0 mg of total protein lysate

IHC 1:500-1:2000

## Applications

### Tested Applications:

WB, IHC, IP, ELISA

### Cited Applications:

WB

### Species Specificity:

human, mouse

### Cited Species:

human, pig

**Note-IHC: suggested antigen retrieval with TE buffer pH 9.0; (\*) Alternatively, antigen retrieval may be performed with citrate buffer pH 6.0**

### Positive Controls:

**WB**: C2C12 cells, HEK-293 cells, HepG2 cells, human brain tissue, HeLa cells, Jurkat cells, NIH/3T3 cells, RAW 264.7 cells

**IP**: HEK-293 cells,

**IHC**: mouse kidney tissue, human placenta tissue, human thyroid cancer tissue, mouse cerebellum tissue

## Background Information

CPSF3 (cleavage and polyadenylation specificity factor 3) is involved in human disease and is the putative target of benzoxaboroles in trypanosomatid parasites and Cryptosporidium infection. CPSF3 has also been associated with cancer malignancy in that CPSF3 induces cell cycle arrest in hepatocellular carcinoma and promotes lung adenocarcinoma cell proliferation and metastasis (PMID: 38718887). CPSF3 has been implicated in various cancers, including lung cancer, colorectal, prostate, and triple-negative breast cancers (PMID: 37627085).

## Notable Publications

Author	Pubmed ID	Journal	Application
J J David Ho	34644561	Cell Rep	WB
Kaili Luo	31186036	J Exp Clin Cancer Res	WB
Peng Lin	38503731	Cell Discov	WB

## Storage

### Storage:

Store at -20°C. Stable for one year after shipment.

### Storage Buffer:

PBS with 0.02% sodium azide and 50% glycerol pH 7.3.

Aliquoting is unnecessary for -20°C storage

\*\*\* 20ul sizes contain 0.1% BSA

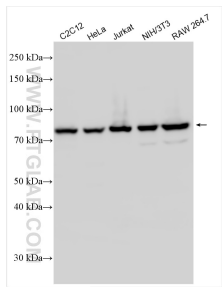
For technical support and original validation data for this product please contact:

T: 1 (888) 4PTGLAB (1-888-478-4522) (toll free in USA), or 1(312) 455-8498 (outside USA)

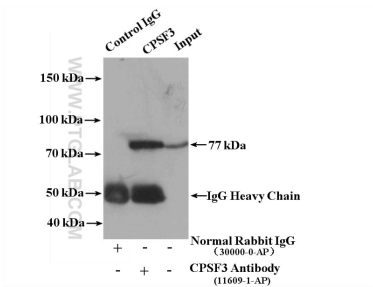
E: proteintech@ptglab.com  
W: ptglab.com

This product is exclusively available under Proteintech Group brand and is not available to purchase from any other manufacturer.

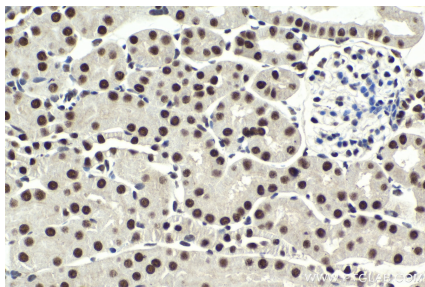
Selected Validation Data



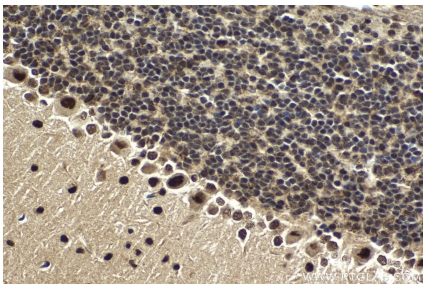
Various lysates were subjected to SDS PAGE followed by western blot with 11609-1-AP (CPSF3 antibody) at dilution of 1:2000 incubated at room temperature for 1.5 hours.



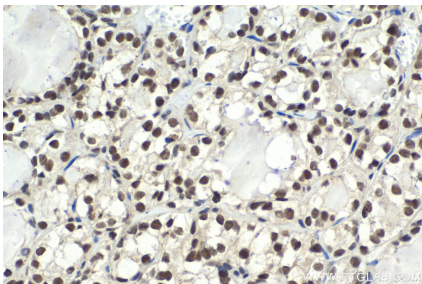
HEK-293 cells were subjected to SDS PAGE followed by western blot with 11609-1-AP (CPSF3 antibody) at dilution of 1:700.



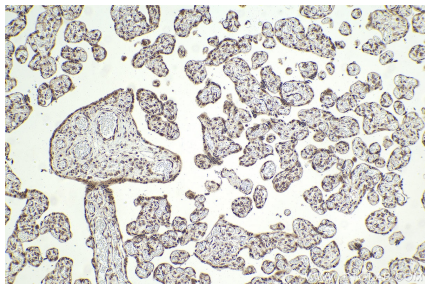
Immunohistochemical analysis of paraffin-embedded mouse kidney tissue slide using 11609-1-AP (CPSF3 antibody) at dilution of 1:1000 (under 40x lens). Heat mediated antigen retrieval with Tris-EDTA buffer (pH 9.0).



Immunohistochemical analysis of paraffin-embedded mouse cerebellum tissue slide using 11609-1-AP (CPSF3 antibody) at dilution of 1:1000 (under 40x lens). Heat mediated antigen retrieval with Tris-EDTA buffer (pH 9.0).



Immunohistochemical analysis of paraffin-embedded human thyroid cancer tissue slide using 11609-1-AP (CPSF3 antibody) at dilution of 1:1000 (under 40x lens). Heat mediated antigen retrieval with Tris-EDTA buffer (pH 9.0).



Immunohistochemical analysis of paraffin-embedded human placenta tissue slide using 11609-1-AP (CPSF3 antibody) at dilution of 1:1000 (under 10x lens). Heat mediated antigen retrieval with Tris-EDTA buffer (pH 9.0).