

For Research Use Only

CDR2 Polyclonal antibody

Catalog Number: 11611-2-AP

1 Publications



Basic Information

Catalog Number: 11611-2-AP	GenBank Accession Number: BC017503	Purification Method: Antigen affinity purification
Size: 150ul , Concentration: 550 ug/ml by Nanodrop and 400 ug/ml by Bradford method using BSA as the standard;	GeneID (NCBI): 1039	Recommended Dilutions: WB 1:500-1:2000 IHC 1:20-1:200
Source: Rabbit	UNIPROT ID: Q01850	
Isotype: IgG	Full Name: cerebellar degeneration-related protein 2, 62kDa	
Immunogen Catalog Number: AG2183	Calculated MW: 454 aa, 52 kDa	
	Observed MW: 62 kDa	

Applications

Tested Applications: WB, IHC, ELISA	Positive Controls:
Cited Applications: WB, IP	WB : human brain tissue, Y79 cells
Species Specificity: human, mouse	IHC : human breast cancer tissue,
Cited Species: human	
Note-IHC: suggested antigen retrieval with TE buffer pH 9.0; (*) Alternatively, antigen retrieval may be performed with citrate buffer pH 6.0	

Background Information

Patients with paraneoplastic cerebellar degeneration (PCD) carry a characteristic antibody called anti-Yo. On Western blot analysis of Purkinje cells and tumor tissue from CD patient, the anti-Yo sera react with at least 2 antigens, a major species of 62 kD called CDR62 or CDR2 [PMID:18045792]. CDR2 is partly characterized, as CDR2 through its leucine zipper motif has been demonstrated to interact with c-myc, with cell cycle-related proteins and with a protein kinase, indicating that CDR2 is involved in signal transduction and gene transcription. Furthermore, CDR2 has been found to attenuate hypoxic response in renal cell carcinoma, and recent data suggest a role for CDR2 and c-myc in mitosis in cycling cells [PMID:21080165].

Notable Publications

Author	Pubmed ID	Journal	Application
Manja Schubert	25341622	Acta Neuropathol	IP, WB

Storage

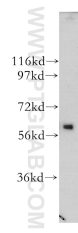
Storage:
Store at -20°C. Stable for one year after shipment.
Storage Buffer:
PBS with 0.02% sodium azide and 50% glycerol pH 7.3.
Aliquoting is unnecessary for -20°C storage

*** 20ul sizes contain 0.1% BSA

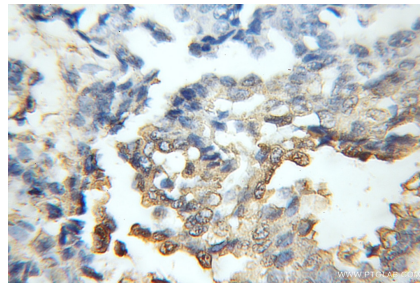
For technical support and original validation data for this product please contact:
T: 1 (888) 4PTGLAB (1-888-478-4522) (toll free in USA), or 1(312) 455-8498 (outside USA)
E: proteintech@ptglab.com
W: ptglab.com

This product is exclusively available under Proteintech Group brand and is not available to purchase from any other manufacturer.

Selected Validation Data



human brain tissue were subjected to SDS PAGE followed by western blot with 11611-2-AP (CDR2 antibody) at dilution of 1:500 incubated at room temperature for 1.5 hours.



Immunohistochemical analysis of paraffin-embedded human breast cancer using 11611-2-AP (CDR2 antibody) at dilution of 1:50 (under 10x lens).