

For Research Use Only

# DOCK8 Polyclonal antibody

Catalog Number: 11622-1-AP

Featured Product

6 Publications



## Basic Information

<b>Catalog Number:</b> 11622-1-AP	<b>GenBank Accession Number:</b> BC019102	<b>Purification Method:</b> Antigen affinity purification
<b>Size:</b> 150ul, Concentration: 500 µg/ml by Nanodrop and 333 µg/ml by Bradford method using BSA as the standard;	<b>GeneID (NCBI):</b> 81704	<b>Recommended Dilutions:</b> WB 1:500-1:1000 IHC 1:20-1:200
<b>Source:</b> Rabbit	<b>Full Name:</b> dedicator of cytokinesis 8	
<b>Isotype:</b> IgG	<b>Calculated MW:</b> 2031 aa, 231 kDa	
<b>Immunogen Catalog Number:</b> AG2040	<b>Observed MW:</b> 230-239 kDa	

## Applications

### Tested Applications:

IHC, WB, ELISA

### Cited Applications:

IF, IP, WB

### Species Specificity:

human, mouse, rat

### Cited Species:

human, mouse

### Positive Controls:

WB: Raji cells, rat lung tissue, THP-1 cells

IHC: human kidney tissue, human heart tissue, mouse kidney tissue, mouse lung tissue

**Note-IHC: suggested antigen retrieval with TE buffer pH 9.0; (\*) Alternatively, antigen retrieval may be performed with citrate buffer pH 6.0**

## Background Information

DOCK8 is a member of the DOCK family of proteins, which have a unique DRH2 domain enabling them to act as GEFs and so controlling a range of cellular processes in various signaling pathways (PMID: 12432077). The specific target of DOCK8 is Cell division control protein 42 homolog (Cdc42), a small GTPase that is involved in regulation of the cell cycle and forms a complex. DOCK8 also acts as a scaffold molecule in this complex that initiates actin polymerization via the Wiskott-Aldrich Syndrome protein (WASp) (PubMed: 28028151, PubMed: 22461490).

## Notable Publications

Author	Pubmed ID	Journal	Application
Rui Martins	27798618	Nat Immunol	WB
Shi-Jie Wang	25428919	Oncotarget	WB, IF, IP
Hua Qu	33627322	Diabetes	WB

## Storage

### Storage:

Store at -20°C. Stable for one year after shipment.

### Storage Buffer:

PBS with 0.02% sodium azide and 50% glycerol pH 7.3.

Aliquoting is unnecessary for -20°C storage

\*\*\* 20ul sizes contain 0.1% BSA

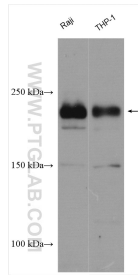
For technical support and original validation data for this product please contact:

T: 1 (888) 4PTGLAB (1-888-478-4522) (toll free in USA), or 1(312) 455-8498 (outside USA)

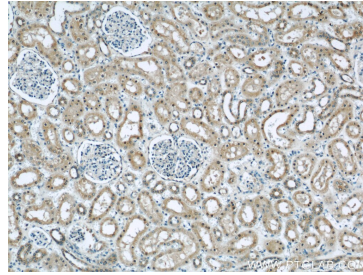
E: [proteintech@ptglab.com](mailto:proteintech@ptglab.com)  
W: [ptglab.com](http://ptglab.com)

This product is exclusively available under Proteintech Group brand and is not available to purchase from any other manufacturer.

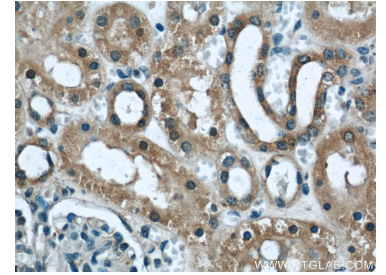
## Selected Validation Data



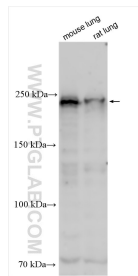
Various lysates were subjected to SDS PAGE followed by western blot with 11622-1-AP (DOCK8 antibody) at dilution of 1:500 incubated at room temperature for 1.5 hours.



Immunohistochemical analysis of paraffin-embedded human kidney using 11622-1-AP (DOCK8 antibody) at dilution of 1:50 (under 10x lens).



Immunohistochemical analysis of paraffin-embedded human kidney using 11622-1-AP (DOCK8 antibody) at dilution of 1:50 (under 40x lens).



Various lysates were subjected to SDS PAGE followed by western blot with 11622-1-AP (DOCK8 antibody) at dilution of 1:1000 incubated at room temperature for 1.5 hours.