

For Research Use Only

LRR 1 Polyclonal antibody

Catalog Number: 11628-1-AP

3 Publications



Basic Information

Catalog Number:

11628-1-AP

Size:

150ul, Concentration: 300 ug/ml by Nanodrop and 267 ug/ml by Bradford method using BSA as the standard;

Source:

Rabbit

Isotype:

IgG

Immunogen Catalog Number:

AG2159

GenBank Accession Number:

BC030142

GeneID (NCBI):

122769

UNIPROT ID:

Q96L50

Full Name:

peptidylprolyl isomerase (cyclophilin)-like 5

Calculated MW:

46.7 kDa

Observed MW:

47 kDa

Purification Method:

Antigen affinity purification

Recommended Dilutions:

WB 1:500-1:2000

IHC 1:20-1:200

Applications

Tested Applications:

WB, IHC, ELISA

Cited Applications:

WB, IF

Species Specificity:

human, mouse, rat

Cited Species:

human, rat

Positive Controls:

WB : U-937 cells,

IHC : human pancreas cancer tissue,

Note-IHC: suggested antigen retrieval with TE buffer pH 9.0; (*) Alternatively, antigen retrieval may be performed with citrate buffer pH 6.0

Notable Publications

Author	Pubmed ID	Journal	Application
Rong Yang	29770434	Immunology	WB
Yunli Ling	32671118	J Immunol Res	WB,IF
Tianchi Chen	30111352	J Exp Clin Cancer Res	WB

Storage

Storage:

Store at -20°C. Stable for one year after shipment.

Storage Buffer:

PBS with 0.02% sodium azide and 50% glycerol pH 7.3.

Aliquoting is unnecessary for -20°C storage

*** 20ul sizes contain 0.1% BSA

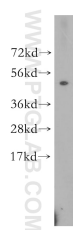
For technical support and original validation data for this product please contact:

T: 1 (888) 4PTGLAB (1-888-478-4522) (toll free in USA), or 1(312) 455-8498 (outside USA)

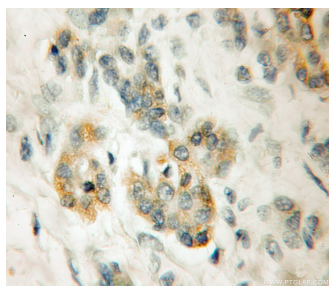
E: proteintech@ptglab.com
W: ptglab.com

This product is exclusively available under Proteintech Group brand and is not available to purchase from any other manufacturer.

Selected Validation Data



U-937 cells were subjected to SDS PAGE followed by western blot with 11628-1-AP (LRR 1 antibody) at dilution of 1:300 incubated at room temperature for 1.5 hours.



Immunohistochemical analysis of paraffin-embedded human pancreas cancer using 11628-1-AP (LRR 1 antibody) at dilution of 1:50 (under 10x lens).