

For Research Use Only

SAFB2 Polyclonal antibody

Catalog Number: 11642-1-AP **2 Publications**



Basic Information

| | | |
|--|--|---|
| Catalog Number: 11642-1-AP | GenBank Accession Number: BC025279 | Purification Method: Antigen affinity purification |
| Size: 150ul , Concentration: 650 ug/ml by Nanodrop and 367 ug/ml by Bradford method using BSA as the standard; | GeneID (NCBI): 9667 | Recommended Dilutions: WB: 1:5000-1:50000 IHC: 1:20-1:200 IF/ICC: 1:200-1:800 |
| Source: Rabbit | UNIPROT ID: Q14151 | |
| Isotype: IgG | Full Name: scaffold attachment factor B2 | |
| Immunogen Catalog Number: AG2230 | Calculated MW: 528aa,57 kDa; 953aa,107 kDa | |
| | Observed MW: 130 kDa | |

Applications

| | |
|--|--|
| Tested Applications: WB, IHC, IF/ICC, ELISA | Positive Controls: WB : MCF-7 cells, BxPC-3 cells, HeLa cells, rat pancreas tissue IHC : human breast cancer tissue, human pancreas cancer tissue IF/ICC : U2OS cells, |
| Cited Applications: WB, IF | |
| Species Specificity: human, rat | |
| Cited Species: mouse | |
| Note-IHC: suggested antigen retrieval with TE buffer pH 9.0; (*) Alternatively, antigen retrieval may be performed with citrate buffer pH 6.0 | |

Background Information

SAFB2, also named as Scaffold attachment factor B2 or KIAA0138, is a 953 amino acid protein, which contains one SAP domain and one RRM (RNA recognition motif) domain. SAFB2 expressed at high levels in the CNS and at low levels in the liver. It also is expressed in a wide number of breast cancer cell lines. SAFB2 binds to scaffold/matrix attachment region (S/MAR) DNA and can function as an estrogen receptor corepressor and can also inhibit cell proliferation.

Notable Publications

| Author | Pubmed ID | Journal | Application |
|------------------|-----------|------------|-------------|
| Bo Zheng | 24339256 | Proteomics | WB,IF |
| Rachel E Cherney | 37468167 | RNA | WB |

Storage

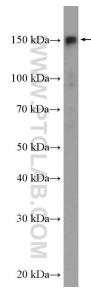
Storage:
Store at -20°C. Stable for one year after shipment.
Storage Buffer:
PBS with 0.02% sodium azide and 50% glycerol, pH7.3
Aliquoting is unnecessary for -20°C storage

*** 20ul sizes contain 0.1% BSA

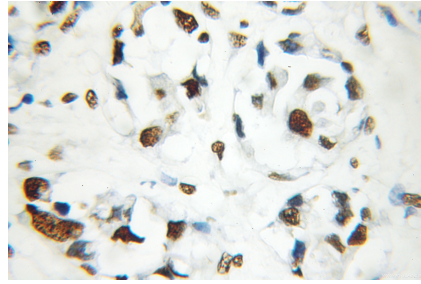
For technical support and original validation data for this product please contact:
T: 1 (888) 4PTGLAB (1-888-478-4522) (toll free in USA), or 1(312) 455-8498 (outside USA)
E: proteintech@ptglab.com
W: ptglab.com

This product is exclusively available under Proteintech Group brand and is not available to purchase from any other manufacturer.

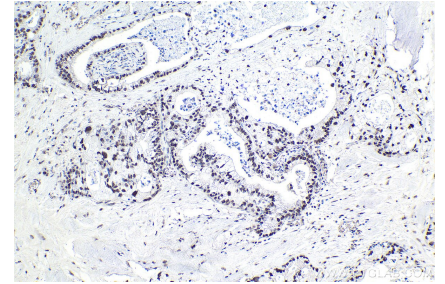
Selected Validation Data



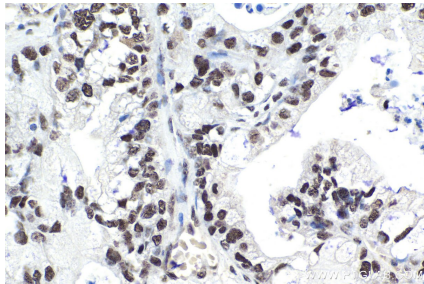
MCF-7 cells were subjected to SDS PAGE followed by western blot with 11642-1-AP (SAFB2 antibody) at dilution of 1:10000 incubated at room temperature for 1.5 hours.



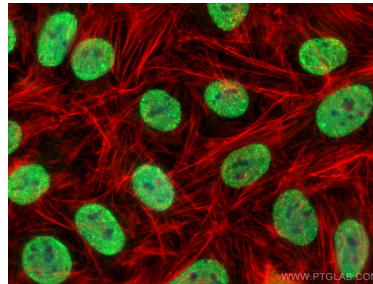
Immunohistochemical analysis of paraffin-embedded human breast cancer using 11642-1-AP (SAFB2 antibody) at dilution of 1:50 (under 40x lens).



Immunohistochemical analysis of paraffin-embedded human pancreas cancer tissue slide using 11642-1-AP (SAFB2 antibody) at dilution of 1:2000 (under 10x lens). Heat mediated antigen retrieval with Tris-EDTA buffer (pH 9.0).



Immunohistochemical analysis of paraffin-embedded human pancreas cancer tissue slide using 11642-1-AP (SAFB2 antibody) at dilution of 1:2000 (under 40x lens). Heat mediated antigen retrieval with Tris-EDTA buffer (pH 9.0).



Immunofluorescent analysis of (4% PFA) fixed U2OS cells using SAFB2 antibody (11642-1-AP) at dilution of 1:400 and Coralite@488-Conjugated AffiniPure Goat Anti-Rabbit IgG(H+L) (SA00013-2), CL594-phalloidin (red).