

# AP4M1 Polyclonal antibody

Catalog Number: 11653-1-AP

1 Publications

## Basic Information

<b>Catalog Number:</b> 11653-1-AP	<b>GenBank Accession Number:</b> BC018705	<b>Purification Method:</b> Antigen affinity purification
<b>Size:</b> 150ul , Concentration: 240 µg/ml by Nanodrop;	<b>GeneID (NCBI):</b> 9179	<b>Recommended Dilutions:</b> WB 1:500-1:1000 IHC 1:50-1:500
<b>Source:</b> Rabbit	<b>Full Name:</b> adaptor-related protein complex 4, mu 1 subunit	
<b>Isotype:</b> IgG	<b>Calculated MW:</b> 453 aa, 50 kDa	
<b>Immunogen Catalog Number:</b> AG2222	<b>Observed MW:</b> 50-55 kDa	

## Applications

<b>Tested Applications:</b> IHC, WB, ELISA	<b>Positive Controls:</b>
<b>Cited Applications:</b> WB	<b>WB :</b> mouse heart tissue, HeLa cells, mouse lung tissue, A431 cells
<b>Species Specificity:</b> human, mouse, rat	<b>IHC :</b> human lymphoma tissue,
<b>Cited Species:</b> human	
<b>Note-IHC: suggested antigen retrieval with TE buffer pH 9.0; (*) Alternatively, antigen retrieval may be performed with citrate buffer pH 6.0</b>	

## Background Information

Adaptor protein (AP) complex is a component of intracellular protein transport. The AP4 complex is involved in sorting transmembrane cargo proteins into transport vesicles for trans-Golgi network export. AP4M1 is a member of the AP4 complex, which also includes AP4B1, AP4E1, and AP4S1. Loss-of-function variants in any of these four members can lead to AP-4-associated hereditary spastic paraplegia (HSP), a neurodegenerative disorder (PMID: 30543385). This antibody recognizes AP4M1.

## Notable Publications

Author	Pubmed ID	Journal	Application
Yuanhao Peng	37821948	Cancer Cell Int	WB

## Storage

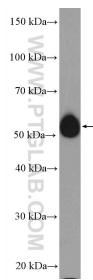
**Storage:**  
Store at -20°C. Stable for one year after shipment.  
**Storage Buffer:**  
PBS with 0.02% sodium azide and 50% glycerol pH 7.3.  
 Aliquoting is unnecessary for -20°C storage

\*\*\* 20ul sizes contain 0.1% BSA

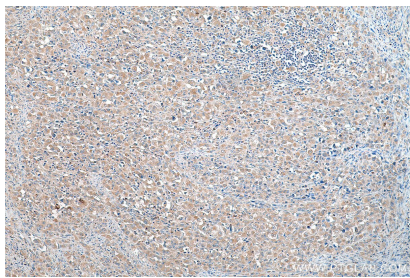
For technical support and original validation data for this product please contact:  
 T: 1 (888) 4PTGLAB (1-888-478-4522) (toll free in USA), or 1(312) 455-8498 (outside USA)  
 E: [proteintech@ptglab.com](mailto:proteintech@ptglab.com)  
 W: [ptglab.com](http://ptglab.com)

This product is exclusively available under Proteintech Group brand and is not available to purchase from any other manufacturer.

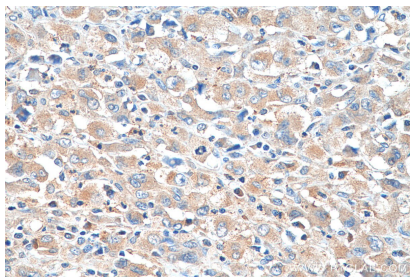
## Selected Validation Data



mouse heart tissue were subjected to SDS PAGE followed by western blot with 11653-1-AP (AP4M1 Antibody) at dilution of 1:600 incubated at room temperature for 1.5 hours.



Immunohistochemical analysis of paraffin-embedded human lymphoma tissue slide using 11653-1-AP (AP4M1 antibody) at dilution of 1:200 (under 10x lens). Heat mediated antigen retrieval with Tris-EDTA buffer (pH 9.0).



Immunohistochemical analysis of paraffin-embedded human lymphoma tissue slide using 11653-1-AP (AP4M1 antibody) at dilution of 1:200 (under 40x lens). Heat mediated antigen retrieval with Tris-EDTA buffer (pH 9.0).