

For Research Use Only

SSR4 Polyclonal antibody

Catalog Number: 11655-2-AP

3 Publications



Basic Information

Catalog Number:

11655-2-AP

Size:

150ul, Concentration: 300 ug/ml by Nanodrop;

Source:

Rabbit

Isotype:

IgG

Immunogen Catalog Number:

AG2250

GenBank Accession Number:

BC003371

GeneID (NCBI):

6748

UNIPROT ID:

P51571

Full Name:

signal sequence receptor, delta (translocon-associated protein delta)

Calculated MW:

173 aa, 19 kDa

Observed MW:

19 kDa

Purification Method:

Antigen affinity purification

Recommended Dilutions:

WB 1:1000-1:8000

IP 0.5-4.0 ug for 1.0-3.0 mg of total protein lysate

IHC 1:50-1:500

IF/ICC 1:10-1:100

Applications

Tested Applications:

WB, IHC, IF/ICC, IP, ELISA

Cited Applications:

WB, IHC

Species Specificity:

human, mouse, rat

Cited Species:

human

Note-IHC: suggested antigen retrieval with TE buffer pH 9.0; (*) Alternatively, antigen retrieval may be performed with citrate buffer pH 6.0

Positive Controls:

WB : HeLa cells, human placenta tissue, HepG2 cells, mouse liver tissue, rat liver tissue

IP : HeLa cells,

IHC : human pancreas cancer tissue,

IF/ICC : HeLa cells,

Background Information

Signal sequence receptor subunit delta (SSR4, or TRAPD) gene encodes the translocon-associated proteins subunit delta, which is about 19-kDa and is located at endoplasmic reticulum (ER) membrane, the translocon-associated proteins complex functions to bind calcium to the ER membrane and thereby regulate the retention of ER resident proteins. TRAP-delta can form heterotetramer with other TRAP homolog TRAP-alpha, TRAP-beta and TRAP-gamma.

Notable Publications

Author	Pubmed ID	Journal	Application
Chatchai Phoomak	33523898	Sci Adv	WB
Weiwei He	34904499	Expert Rev Mol Diagn	IHC
Jiaqi Zhang	39840762	Cancer Med	IHC

Storage

Storage:

Store at -20°C. Stable for one year after shipment.

Storage Buffer:

PBS with 0.02% sodium azide and 50% glycerol pH 7.3.

Aliquoting is unnecessary for -20°C storage

*** 20ul sizes contain 0.1% BSA

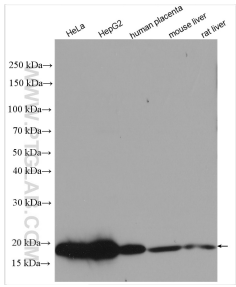
For technical support and original validation data for this product please contact:

T: 1 (888) 4PTGLAB (1-888-478-4522) (toll free in USA), or 1(312) 455-8498 (outside USA)

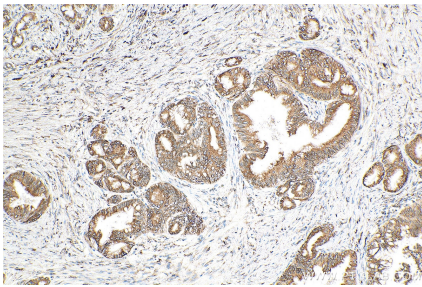
E: proteintech@ptglab.com
W: ptglab.com

This product is exclusively available under Proteintech Group brand and is not available to purchase from any other manufacturer.

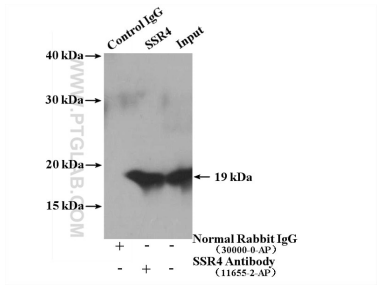
Selected Validation Data



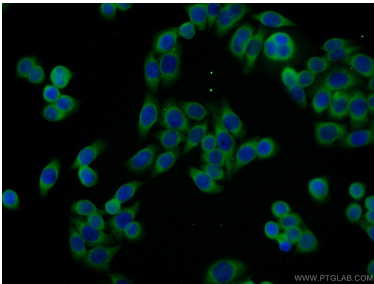
Various lysates were subjected to SDS PAGE followed by western blot with 11655-2-AP (SSR4 antibody) at dilution of 1:4000 incubated at room temperature for 1.5 hours.



Immunohistochemical analysis of paraffin-embedded human pancreas cancer tissue slide using 11655-2-AP (SSR4 antibody) at dilution of 1:200 (under 10x lens). Heat mediated antigen retrieval with Tris-EDTA buffer (pH 9.0).



IP result of anti-SSR4 (IP:11655-2-AP, 4ug; Detection:11655-2-AP 1:300) with HeLa cells lysate 2600 ug.



Immunofluorescent analysis of HeLa cells using 11655-2-AP (SSR4 antibody) at dilution of 1:25 and Alexa Fluor 488-conjugated Goat Anti-Rabbit IgG(H+L).