

For Research Use Only

# RRM2 Polyclonal antibody

Catalog Number: 11661-1-AP

21 Publications



## Basic Information

### Catalog Number:

11661-1-AP

### Size:

150ul, Concentration: 500 ug/ml by Nanodrop;

### Source:

Rabbit

### Isotype:

IgG

### Immunogen Catalog Number:

AG2203

### GenBank Accession Number:

BC030154

### GeneID (NCBI):

6241

### UNIPROT ID:

P31350

### Full Name:

ribonucleotide reductase M2 polypeptide

### Calculated MW:

389 aa, 45 kDa

### Observed MW:

45 kDa

### Purification Method:

Antigen affinity purification

### Recommended Dilutions:

WB 1:1000-1:6000

IP 0.5-4.0 ug for 1.0-3.0 mg of total protein lysate

IHC 1:1000-1:4000

IF/ICC 1:200-1:800

## Applications

### Tested Applications:

WB, IHC, IF/ICC, FC (Intra), IP, ELISA

### Cited Applications:

WB, IHC, IF, IP, CoIP, RIP

### Species Specificity:

human

### Cited Species:

human, mouse, chicken

### Positive Controls:

WB : HeLa cells, A431 cells, HUVEC cells, K-562 cells

IP : K-562 cells,

IHC : human appendicitis tissue,

IF/ICC : HepG2 cells,

**Note-IHC: suggested antigen retrieval with TE buffer pH 9.0; (\*) Alternatively, antigen retrieval may be performed with citrate buffer pH 6.0**

## Background Information

Ribonucleotide reductase M2 subunit is one of two subunits that constitute ribonucleotide reductase, the enzyme that catalyzes the conversion of ribonucleotide 5'-diphosphates into 2'-deoxyribonucleotides, a rate-limiting step in the production of 2'-deoxyribonucleoside 5'-diphosphates (dNTP) required for DNA synthesis and repair that is required for DNA synthesis and repair [PMID:20825972, 19250552]. RRM2 is only expressed during the late G1/early S phase, and degraded in late S phase, and the activity of RNR, and therefore DNA synthesis and cell proliferation, is controlled during the cell cycle by the synthesis and degradation of RRM2 subunit [PMID:3894352].

## Notable Publications

Author	Pubmed ID	Journal	Application
Qiao Song	36243980	Nucleic Acids Res	WB, CoIP
Tingbo Ye	35677150	Front Oncol	IHC
Binshan Shi	29587790	Viol J	WB

## Storage

### Storage:

Store at -20°C. Stable for one year after shipment.

### Storage Buffer:

PBS with 0.02% sodium azide and 50% glycerol, pH7.3

Aliquoting is unnecessary for -20°C storage

\*\*\* 20ul sizes contain 0.1% BSA

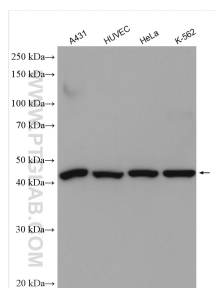
For technical support and original validation data for this product please contact:

T: 1 (888) 4PTGLAB (1-888-478-4522) (toll free in USA), or 1(312) 455-8498 (outside USA)

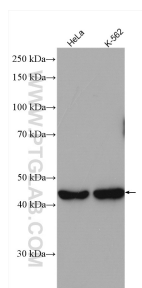
E: proteintech@ptglab.com  
W: ptglab.com

This product is exclusively available under Proteintech Group brand and is not available to purchase from any other manufacturer.

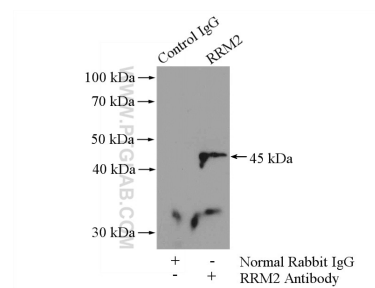
## Selected Validation Data



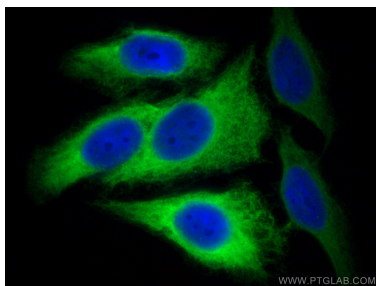
Various lysates were subjected to SDS PAGE followed by western blot with 11661-1-AP (RRM2 antibody) at dilution of 1:5000 incubated at room temperature for 1.5 hours.



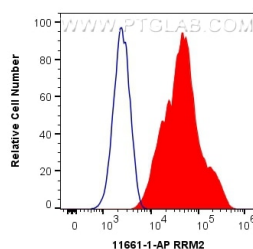
Various lysates were subjected to SDS PAGE followed by western blot with 11661-1-AP (RRM2 antibody) at dilution of 1:3000 incubated at room temperature for 1.5 hours.



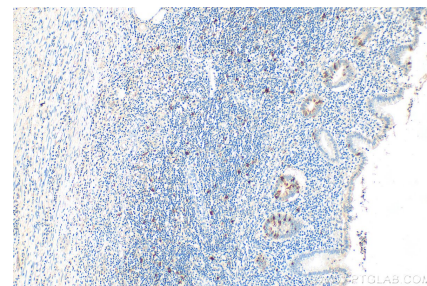
IP result of anti-RRM2 (IP:11661-1-AP, 4ug; Detection:11661-1-AP 1:500) with K-562 cells lysate 1200ug.



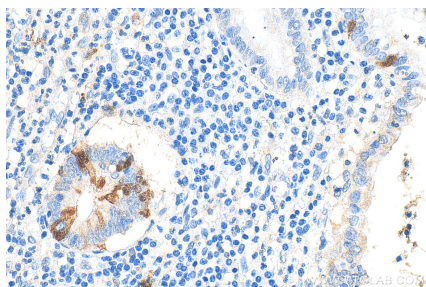
Immunofluorescent analysis of (-20°C Methanol) fixed HepG2 cells using RRM2 antibody (11661-1-AP) at dilution of 1:400 and CoraLite@488-Conjugated AffiniPure Goat Anti-Rabbit IgG(H+L).



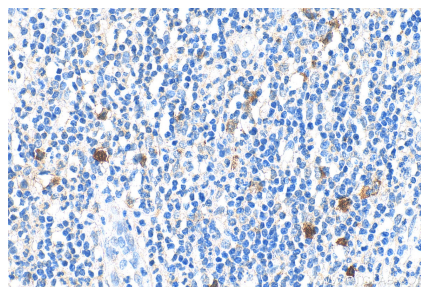
1X10<sup>6</sup> HepG2 cells were intracellularly stained with 0.4 ug Anti-Human RRM2 (11661-1-AP) and CoraLite@488-Conjugated AffiniPure Goat Anti-Rabbit IgG(H+L) at dilution 1:1000 (red), or 0.4 ug Isotype Control. Cells were fixed with 4% PFA and permeabilized with Flow Cytometry Perm Buffer (PF00011-C).



Immunohistochemical analysis of paraffin-embedded human appendicitis tissue slide using 11661-1-AP (RRM2 antibody) at dilution of 1:2000 (under 10x lens). Heat mediated antigen retrieval with Tris-EDTA buffer (pH 9.0).



Immunohistochemical analysis of paraffin-embedded human appendicitis tissue slide using 11661-1-AP (RRM2 antibody) at dilution of 1:2000 (under 40x lens). Heat mediated antigen retrieval with Tris-EDTA buffer (pH 9.0).



Immunohistochemical analysis of paraffin-embedded human appendicitis tissue slide using 11661-1-AP (RRM2 antibody) at dilution of 1:2000 (under 40x lens). Heat mediated antigen retrieval with Tris-EDTA buffer (pH 9.0).