

For Research Use Only

RAB1A Polyclonal antibody

Catalog Number: 11671-1-AP

Featured Product

23 Publications



Basic Information

Catalog Number:

11671-1-AP

Size:

150ul, Concentration: 700 ug/ml by Nanodrop;

Source:

Rabbit

Isotype:

IgG

Immunogen Catalog Number:

AG2264

GenBank Accession Number:

BC000905

GeneID (NCBI):

5861

UNIPROT ID:

P62820

Full Name:

RAB1A, member RAS oncogene family

Calculated MW:

205 aa, 23 kDa

Observed MW:

23 kDa

Purification Method:

Antigen affinity purification

Recommended Dilutions:

WB: 1:2000-1:8000

IP: 0.5-4.0 ug for 1.0-3.0 mg of total protein lysate

IHC: 1:50-1:500

IF/ICC: 1:200-1:800

FC (Intra): 0.40 ug per 10⁶ cells in a 100 µl suspension

Applications

Tested Applications:

WB, IHC, IF/ICC, FC (Intra), IP, ELISA

Cited Applications:

WB, IHC, IF, IP

Species Specificity:

human, mouse, rat

Cited Species:

human, mouse, rat

Note-IHC: suggested antigen retrieval with TE buffer pH 9.0; (*) Alternatively, antigen retrieval may be performed with citrate buffer pH 6.0

Positive Controls:

WB: mouse brain tissue, human brain tissue, NIH/3T3 cells, U-251 cells, rat brain tissue, U2OS cells

IP: A549 cells, C2C12 cells

IHC: human lung cancer tissue, human liver tissue, human colon cancer tissue

IF/ICC: C2C12 cells, NIH/3T3 cells, A549 cells

FC (Intra): C2C12 cells,

Background Information

Rab1A is a member of the Rab family of small GTPases with a well characterized function in the regulation of vesicle trafficking from the endoplasmic reticulum to the Golgi apparatus and within Golgi compartments. Rab1A has recently been reported an mTORC1 activator and a colorectal oncogene (Janice D. Thomas. et al. 2014. Cancer cell).

Notable Publications

Author	Pubmed ID	Journal	Application
Ranran Sun	33008587	Biochem Biophys Res Commun	WB
Tinglei Huang	34627950	Cancer Lett	WB, IHC, IF
Xinxin Wang	27902464	Aging (Albany NY)	WB, IHC

Storage

Storage:

Store at -20°C. Stable for one year after shipment.

Storage Buffer:

PBS with 0.02% sodium azide and 50% glycerol, pH7.3

Aliquoting is unnecessary for -20°C storage

*** 20ul sizes contain 0.1% BSA

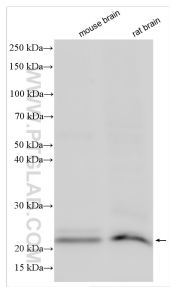
For technical support and original validation data for this product please contact:

T: 1 (888) 4PTGLAB (1-888-478-4522) (toll free in USA), or 1(312) 455-8498 (outside USA)

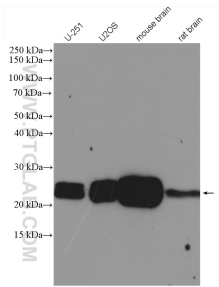
E: proteintech@ptglab.com
W: ptglab.com

This product is exclusively available under Proteintech Group brand and is not available to purchase from any other manufacturer.

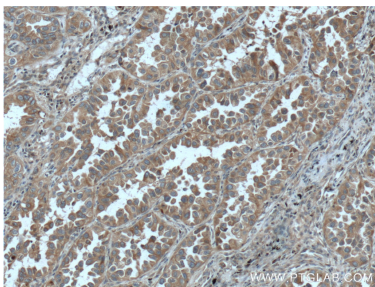
Selected Validation Data



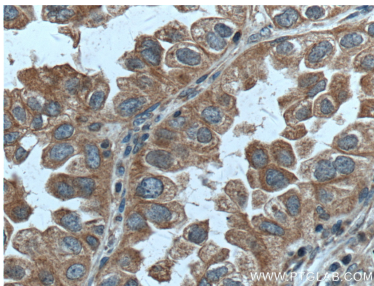
Various lysates were subjected to SDS PAGE followed by western blot with 11671-1-AP (RAB1A antibody) at dilution of 1:12000 incubated at room temperature for 1.5 hours.



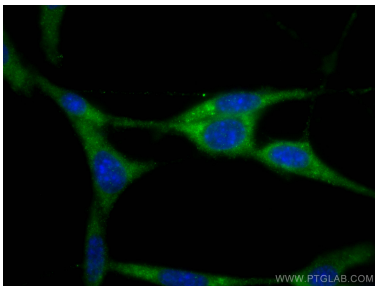
Various lysates were subjected to SDS PAGE followed by western blot with 11671-1-AP (RAB1A antibody) at dilution of 1:2000 incubated at 4 degree celsius over night.



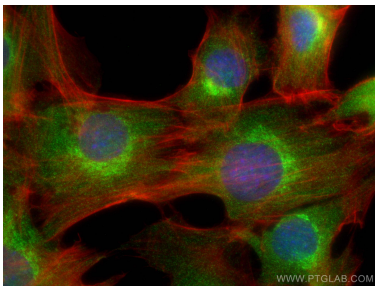
Immunohistochemical analysis of paraffin-embedded human lung cancer tissue slide using 11671-1-AP (RAB1A Antibody) at dilution of 1:200 (under 10x lens). Heat mediated antigen retrieval with Tris-EDTA buffer (pH 9.0).



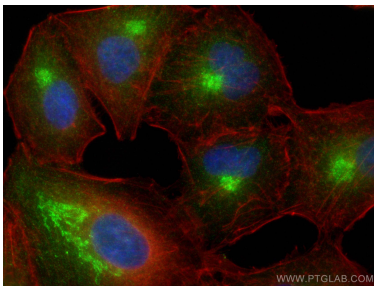
Immunohistochemical analysis of paraffin-embedded human lung cancer tissue slide using 11671-1-AP (RAB1A Antibody) at dilution of 1:200 (under 40x lens). Heat mediated antigen retrieval with Tris-EDTA buffer (pH 9.0).



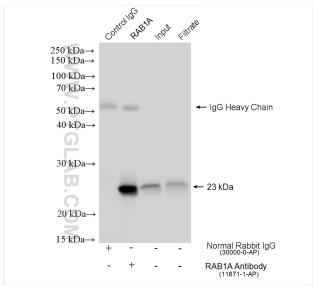
Immunofluorescent analysis of (-20°C Ethanol) fixed NIH/3T3 cells using RAB1A antibody (11671-1-AP) at dilution of 1:200 and CoraLite®488-Conjugated Goat Anti-Rabbit IgG(H+L).



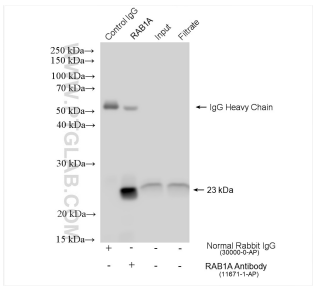
Immunofluorescent analysis of (4% PFA) fixed C2C12 cells using RAB1A antibody (11671-1-AP) at dilution of 1:400 and CoraLite®488-Conjugated Goat Anti-Rabbit IgG(H+L), CL594-phalloidin (red).



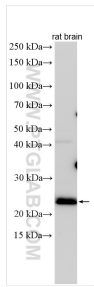
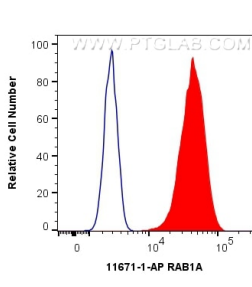
Immunofluorescent analysis of (4% PFA) fixed A549 cells using RAB1A antibody (11671-1-AP) at dilution of 1:200 and CoraLite®488-Conjugated Goat Anti-Rabbit IgG(H+L), CL594-phalloidin (red).



IP result of anti-RAB1A (IP:11671-1-AP, 4ug; Detection:11671-1-AP 1:4000) with A549 cells lysate 920 ug.



IP result of anti-RAB1A (IP:11671-1-AP, 4ug; Detection:11671-1-AP 1:4000) with C2C12 cells lysate 1280 ug.



1X10⁶ C2C12 cells were intracellularly stained with 0.4 ug Anti-Human RAB1A (11671-1-AP) and CoraLite®488-Conjugated Goat Anti-Rabbit IgG(H+L) at dilution 1:1000 (red), or 0.4 ug Isotype Control. Cells were fixed with 4% PFA and permeabilized with Flow Cytometry Perm Buffer (PF00011-C).

Various lysates were subjected to SDS PAGE followed by western blot with 11671-1-AP (RAB1A antibody) at dilution of 1:10000 incubated at room temperature for 1.5 hours.