

For Research Use Only

# SUGT1 Polyclonal antibody

Catalog Number: 11675-1-AP

6 Publications



## Basic Information

### Catalog Number:

11675-1-AP

### Size:

150ul, Concentration: 500 ug/ml by Nanodrop;

### Source:

Rabbit

### Isotype:

IgG

### Immunogen Catalog Number:

AG2275

### GenBank Accession Number:

BC000911

### GeneID (NCBI):

10910

### UNIPROT ID:

Q9Y2Z0

### Full Name:

SGT1, suppressor of G2 allele of SKP1 (S. cerevisiae)

### Calculated MW:

41 kDa

### Observed MW:

38 kDa and 41 kDa

### Purification Method:

Antigen affinity purification

### Recommended Dilutions:

WB 1:1000-1:4000

IP 0.5-4.0 ug for 1.0-3.0 mg of total protein lysate

IHC 1:20-1:200

IF/ICC 1:50-1:500

## Applications

### Tested Applications:

WB, IHC, IF/ICC, IP, ELISA

### Cited Applications:

WB, IHC

### Species Specificity:

human

### Cited Species:

human, mouse

**Note-IHC: suggested antigen retrieval with TE buffer pH 9.0; (\*) Alternatively, antigen retrieval may be performed with citrate buffer pH 6.0**

### Positive Controls:

WB: Jurkat cells, HeLa cells

IP: HEK-293 cells,

IHC: human pancreas cancer tissue,

IF/ICC: A431 cells,

## Notable Publications

| Author          | Pubmed ID | Journal       | Application |
|-----------------|-----------|---------------|-------------|
| H Ogi           | 25985210  | Oncogenesis   | IHC         |
| Xueyan Shi      | 35720321  | Front Immunol | WB          |
| Agnieszka Góral | 27249023  | PLoS One      | WB          |

## Storage

### Storage:

Store at -20°C. Stable for one year after shipment.

### Storage Buffer:

PBS with 0.02% sodium azide and 50% glycerol pH 7.3.

Aliquoting is unnecessary for -20°C storage

\*\*\* 20ul sizes contain 0.1% BSA

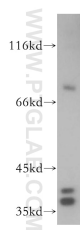
For technical support and original validation data for this product please contact:

T: 1 (888) 4PTGLAB (1-888-478-4522) (toll free in USA), or 1(312) 455-8498 (outside USA)

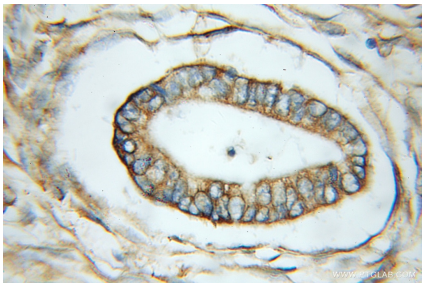
E: [proteintech@ptglab.com](mailto:proteintech@ptglab.com)  
W: [ptglab.com](http://ptglab.com)

This product is exclusively available under Proteintech Group brand and is not available to purchase from any other manufacturer.

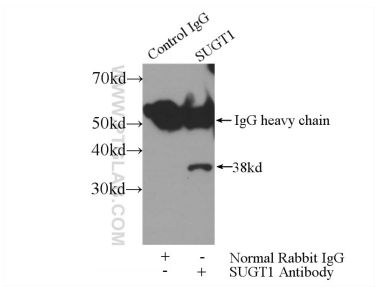
Selected Validation Data



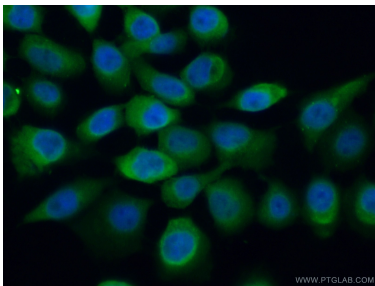
Jurkat cells were subjected to SDS PAGE followed by western blot with 11675-1-AP (SUGT1 antibody) at dilution of 1:300 incubated at room temperature for 1.5 hours.



Immunohistochemical analysis of paraffin-embedded human pancreas cancer using 11675-1-AP (SUGT1 antibody) at dilution of 1:50 (under 10x lens).



IP result of anti-SUGT1 (IP:11675-1-AP, 3ug; Detection:11675-1-AP 1:500) with HEK-293 cells lysate 3200ug.



Immunofluorescent analysis of (4% PFA) fixed A431 cells using 11675-1-AP (SUGT1 antibody) at dilution of 1:50 and Alexa Fluor 488-conjugated Goat Anti-Rabbit IgG(H+L).