

For Research Use Only

PLEK2 Polyclonal antibody

Catalog Number: 11685-1-AP

Featured Product

20 Publications



Basic Information

Catalog Number:

11685-1-AP

Size:

150ul, Concentration: 800 ug/ml by Nanodrop;

Source:

Rabbit

Isotype:

IgG

Immunogen Catalog Number:

AG2297

GenBank Accession Number:

BC001226

GeneID (NCBI):

26499

UNIPROT ID:

Q9NYTO

Full Name:

pleckstrin 2

Calculated MW:

353 aa, 40 kDa

Observed MW:

38-40 kDa

Purification Method:

Antigen affinity purification

Recommended Dilutions:

WB: 1:500-1:2000

IHC: 1:20-1:200

IF/ICC: 1:50-1:500

FC (Intra): 0.40 ug per 10⁶ cells in a 100 µl suspension

Applications

Tested Applications:

WB, IHC, IF/ICC, FC (Intra), ELISA

Cited Applications:

WB, IHC, IF, IP, CoIP

Species Specificity:

human, mouse, rat

Cited Species:

human, mouse

Note-IHC: suggested antigen retrieval with TE buffer pH 9.0; (*) Alternatively, antigen retrieval may be performed with citrate buffer pH 6.0

Positive Controls:

WB: HT-29 cells, U2OS cells, Caco-2 cells, PC-3 cells

IHC: human pancreas cancer tissue, mouse spleen tissue

IF/ICC: HT-29 cells,

FC (Intra): HT-29 cells,

Background Information

PLEK2 belongs to the Pleckstrin homology domain family and is a 40-kDa protein containing the prototypic PH domains at its amino and carboxyl termini (PMID: 10419454). PLEK2 associates with membrane-bound phosphatidylinositols generated by phosphatidylinositol 3-kinase. PLEK2 interacts with the actin cytoskeleton to induce cell spreading.

Notable Publications

Author	Pubmed ID	Journal	Application
Dong-Ming Wu	31498891	Int J Cancer	
Feng Wang	34601488	Cell Death Dis	WB, IHC
Baobing Zhao	29202466	J Clin Invest	WB, IHC

Storage

Storage:

Store at -20°C. Stable for one year after shipment.

Storage Buffer:

PBS with 0.02% sodium azide and 50% glycerol, pH7.3

Aliquoting is unnecessary for -20°C storage

*** 20ul sizes contain 0.1% BSA

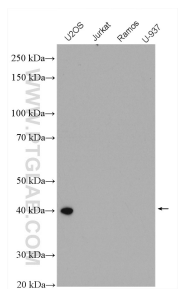
For technical support and original validation data for this product please contact:

T: 1 (888) 4PTGLAB (1-888-478-4522) (toll free in USA), or 1(312) 455-8498 (outside USA)

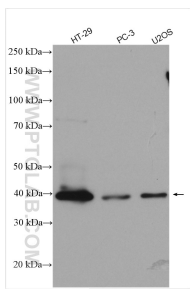
E: proteintech@ptglab.com
W: ptglab.com

This product is exclusively available under Proteintech Group brand and is not available to purchase from any other manufacturer.

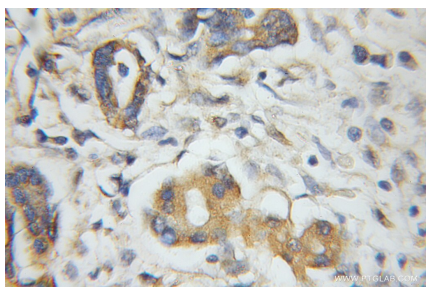
Selected Validation Data



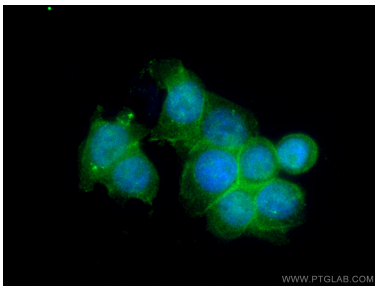
U2OS (positive), Jurkat, Ramos, and U-937 (negative) cells were subjected to SDS PAGE followed by western blot with 11685-1-AP (PLEK2 antibody) at dilution of 1:500 incubated at room temperature for 1.5 hours.



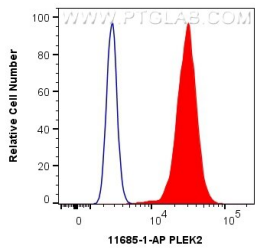
Various lysates were subjected to SDS PAGE followed by western blot with 11685-1-AP (PLEK2 antibody) at dilution of 1:1000 incubated at room temperature for 1.5 hours.



Immunohistochemical analysis of paraffin-embedded human pancreas cancer using 11685-1-AP (PLEK2 antibody) at dilution of 1:50 (under 10x lens).



Immunofluorescent analysis of (4% PFA) fixed HT-29 cells using PLEK2 antibody (11685-1-AP) at dilution of 1:200 and CoraLite®488-Conjugated AffiniPure Goat Anti-Rabbit IgG(H+L).



1X10⁶ HT-29 cells were intracellularly stained with 0.4 ug Anti-Human PLEK2 (11685-1-AP) and CoraLite®488-Conjugated AffiniPure Goat Anti-Rabbit IgG(H+L) at dilution 1:1000 (red), or 0.4 ug Rabbit IgG control Rabbit PolyAb (30000-O-AP, Clone:) (blue). Cells were fixed with 4% PFA and permeabilized with Flow Cytometry Perm Buffer (PF00011-C).