

For Research Use Only

SSB Polyclonal antibody

Catalog Number: 11720-1-AP **5 Publications**



Basic Information

Catalog Number:

11720-1-AP

Size:

150ul , Concentration: 400 ug/ml by Nanodrop and 247 ug/ml by Bradford method using BSA as the standard;

Source:

Rabbit

Isotype:

IgG

Immunogen Catalog Number:

AG2294

GenBank Accession Number:

BC001289

GeneID (NCBI):

6741

UNIPROT ID:

P05455

Full Name:

Sjogren syndrome antigen B (autoantigen La)

Calculated MW:

408 aa, 47 kDa

Observed MW:

47 kDa

Purification Method:

Antigen affinity purification

Recommended Dilutions:

WB 1:1000-1:4000

IP 0.5-4.0 ug for 1.0-3.0 mg of total protein lysate

IF/ICC 1:300-1:1200

Applications

Tested Applications:

WB, IF/ICC, IP, ELISA

Cited Applications:

WB

Species Specificity:

human

Cited Species:

human

Positive Controls:

WB : Jurkat cells, HeLa cells, HEK-293 cells

IP : Jurkat cells,

IF/ICC : HeLa cells,

Notable Publications

Author	Pubmed ID	Journal	Application
Jun Tian	34745423	Oxid Med Cell Longev	WB
Ahmed S Warda	29051200	EMBO Rep	WB
Li Wang	29503206	Cell Chem Biol	WB

Storage

Storage:

Store at -20°C. Stable for one year after shipment.

Storage Buffer:

PBS with 0.02% sodium azide and 50% glycerol, pH7.3

Aliquoting is unnecessary for -20°C storage

*** 20ul sizes contain 0.1% BSA

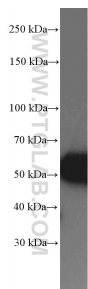
For technical support and original validation data for this product please contact:

T: 1 (888) 4PTGLAB (1-888-478-4522) (toll free in USA), or 1(312) 455-8498 (outside USA)

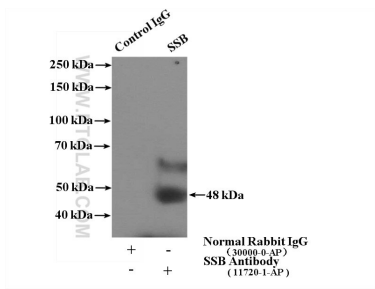
E: proteintech@ptglab.com
W: ptglab.com

This product is exclusively available under Proteintech Group brand and is not available to purchase from any other manufacturer.

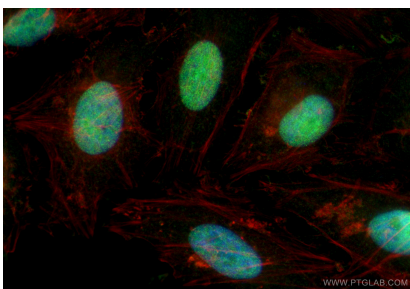
Selected Validation Data



Jurkat cells were subjected to SDS PAGE followed by western blot with 11720-1-AP (SSB Antibody) at dilution of 1:2000 incubated at room temperature for 1.5 hours.



IP result of anti-SSB (IP:11720-1-AP, 4ug; Detection:11720-1-AP 1:300) with Jurkat cells lysate 3600ug.



Immunofluorescent analysis of (4% PFA) fixed HeLa cells using SSB antibody (11720-1-AP) at dilution of 1:600 and CoraLite®488-Conjugated Goat Anti-Rabbit IgG(H+L) (SA00013-2), CL594-phalloidin (red).