

For Research Use Only

RAD1 Polyclonal antibody

Catalog Number: 11726-2-AP

5 Publications



Basic Information

Catalog Number:

11726-2-AP

Size:

150ul, Concentration: 350 ug/ml by Nanodrop and 267 ug/ml by Bradford method using BSA as the standard;

Source:

Rabbit

Isotype:

IgG

Immunogen Catalog Number:

AG2316

GenBank Accession Number:

BC006837

GeneID (NCBI):

5810

UNIPROT ID:

O60671

Full Name:

RAD1 homolog (S. pombe)

Calculated MW:

32 kDa

Observed MW:

32 kDa

Purification Method:

Antigen affinity purification

Recommended Dilutions:

WB 1:500-1:3000

IP 0.5-4.0 ug for 1.0-3.0 mg of total protein lysate

IHC 1:500-1:2000

IF/ICC 1:50-1:500

Applications

Tested Applications:

WB, IHC, IF/ICC, IP, ELISA

Cited Applications:

WB

Species Specificity:

human, mouse

Cited Species:

human, rat, rainbow trout

Note-IHC: suggested antigen retrieval with TE buffer pH 9.0; (*) Alternatively, antigen retrieval may be performed with citrate buffer pH 6.0

Positive Controls:

WB : HeLa cells, mouse spleen tissue, K-562 cells, L02 cells

IP : HeLa cells,

IHC : human lung tissue,

IF/ICC : HeLa cells,

Background Information

RAD1, cell cycle checkpoint protein, is a component of a heterotrimeric cell cycle checkpoint 9-1-1 complex, that is activated to stop cell cycle progression in response to DNA damage or incomplete DNA replication. RAD1, HUS1 and RAD9 are central components of a DNA damage-responsive protein complex. Testis-specific disruption of RAD1 in mice resulted in defective double-strand break repair, depletion of germ cells and infertility (PMID: 35133274). RAD1 has 3 isoforms produced by alternative splicing.

Notable Publications

Author	Pubmed ID	Journal	Application
Xiaoli Xu	30184152	J Mol Cell Biol	WB
Bin Chen	35152263	Oncogene	WB
Rongyi Shi	32783654	Am J Physiol Cell Physiol	WB

Storage

Storage:

Store at -20°C. Stable for one year after shipment.

Storage Buffer:

PBS with 0.02% sodium azide and 50% glycerol pH 7.3.

Aliquoting is unnecessary for -20°C storage

*** 20ul sizes contain 0.1% BSA

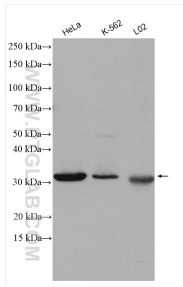
For technical support and original validation data for this product please contact:

T: 1 (888) 4PTGLAB (1-888-478-4522) (toll free in USA), or 1(312) 455-8498 (outside USA)

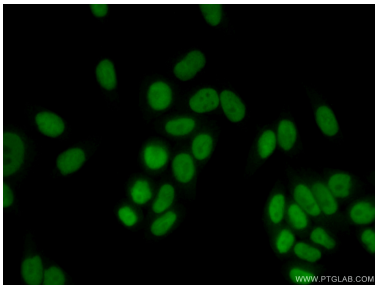
E: proteintech@ptglab.com
W: ptglab.com

This product is exclusively available under Proteintech Group brand and is not available to purchase from any other manufacturer.

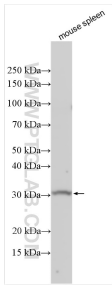
Selected Validation Data



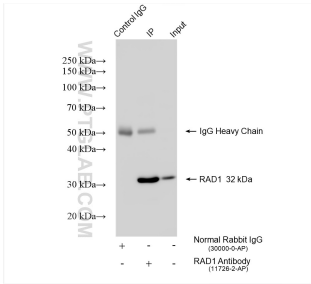
Various lysates were subjected to SDS PAGE followed by western blot with 11726-2-AP (RAD1 antibody) at dilution of 1:1500 incubated at room temperature for 1.5 hours.



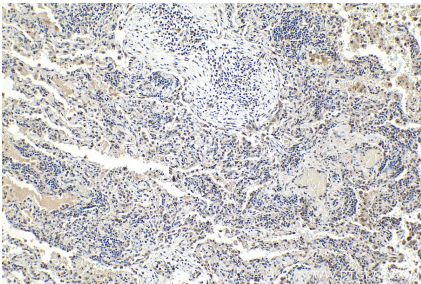
Immunofluorescent analysis of (4% PFA) fixed HeLa cells using 11726-2-AP (RAD1 antibody) at dilution of 1:50 and Alexa Fluor 488-conjugated AffiniPure Goat Anti-Rabbit IgG(H+L).



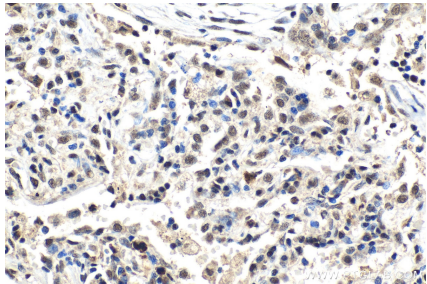
Various lysates were subjected to SDS PAGE followed by western blot with 11726-2-AP (RAD1 antibody) at dilution of 1:1500 incubated at room temperature for 1.5 hours.



IP result of anti-RAD1 (IP:11726-2-AP, 4ug; Detection:11726-2-AP 1:2000) with HeLa cells lysate 1200 ug.



Immunohistochemical analysis of paraffin-embedded human lung tissue slide using 11726-2-AP (RAD1 antibody) at dilution of 1:1000 (under 10x lens). Heat mediated antigen retrieval with Tris-EDTA buffer (pH 9.0).



Immunohistochemical analysis of paraffin-embedded human lung tissue slide using 11726-2-AP (RAD1 antibody) at dilution of 1:1000 (under 40x lens). Heat mediated antigen retrieval with Tris-EDTA buffer (pH 9.0).