

For Research Use Only

CHCHD1 Polyclonal antibody

Catalog Number: 11728-1-AP

1 Publications



Basic Information

Catalog Number: 11728-1-AP	GenBank Accession Number: BC020852	Purification Method: Antigen affinity purification
Size: 150ul , Concentration: 1000 ug/ml by Nanodrop and 433 ug/ml by Bradford method using BSA as the standard;	GeneID (NCBI): 118487	Recommended Dilutions: WB 1:500-1:1000 IHC 1:50-1:500 IF/ICC 1:50-1:500
Source: Rabbit	UNIPROT ID: Q96BP2	
Isotype: IgG	Full Name: coiled-coil-helix-coiled-coil-helix domain containing 1	
Immunogen Catalog Number: AG2325	Calculated MW: 13 kDa	
	Observed MW: 13 kDa	

Applications

Tested Applications: WB, IHC, IF/ICC, FC (Intra), ELISA	Positive Controls:
Species Specificity: human	WB : A431 cells,
Note-IHC: suggested antigen retrieval with TE buffer pH 9.0; (*) Alternatively, antigen retrieval may be performed with citrate buffer pH 6.0	IHC : human stomach cancer tissue,
	IF/ICC : A431 cells,

Notable Publications

Author	Pubmed ID	Journal	Application
Taru Hilander	39015150	iScience	

Storage

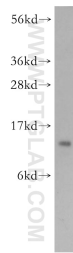
Storage:
Store at -20°C. Stable for one year after shipment.
Storage Buffer:
PBS with 0.02% sodium azide and 50% glycerol pH 7.3.
Aliquoting is unnecessary for -20°C storage

*** 20ul sizes contain 0.1% BSA

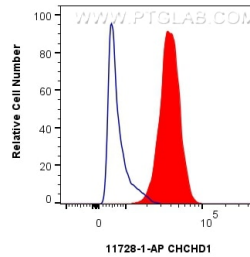
For technical support and original validation data for this product please contact:
T: 1 (888) 4PTGLAB (1-888-478-4522) (toll free in USA), or 1(312) 455-8498 (outside USA)
E: proteintech@ptglab.com
W: ptglab.com

This product is exclusively available under Proteintech Group brand and is not available to purchase from any other manufacturer.

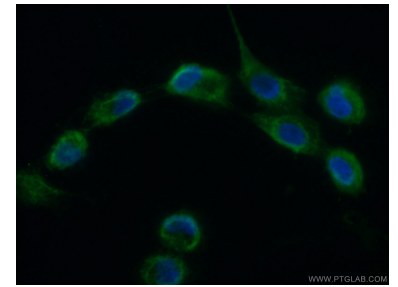
Selected Validation Data



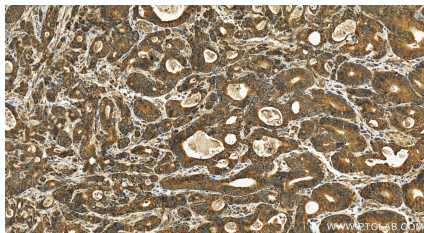
A431 cells were subjected to SDS PAGE followed by western blot with 11728-1-AP (CHCHD1 antibody) at dilution of 1:300 incubated at room temperature for 1.5 hours.



1×10^6 A431 cells were intracellularly stained with 0.25 μ g CHCHD1 Polyclonal antibody (11728-1-AP) and CoraLite®488-Conjugated Goat Anti-Rabbit IgG(H+L) (SA00013-2)(red), or 0.25 μ g Rabbit IgG control Rabbit PolyAb (30000-0-AP) (blue). Cells were fixed with 4% PFA and permeabilized with Flow Cytometry Perm Buffer (PF00011-C).



Immunofluorescent analysis of (10% Formaldehyde) fixed A431 cells using 11728-1-AP (CHCHD1 antibody) at dilution of 1:50 and Alexa Fluor 488-conjugated AffiniPure Goat Anti-Rabbit IgG(H+L).



Immunohistochemical analysis of paraffin-embedded human stomach cancer tissue slide using 11728-1-AP (CHCHD1 antibody) at dilution of 1:200 (under 20x lens). Heat mediated antigen retrieval with Tris-EDTA buffer (pH 9.0).