

For Research Use Only

# YPEL5 Polyclonal antibody

Catalog Number: 11730-1-AP

5 Publications



## Basic Information

### Catalog Number:

11730-1-AP

### Size:

150ul, Concentration: 750 ug/ml by Nanodrop;

### Source:

Rabbit

### Isotype:

IgG

### Immunogen Catalog Number:

AG2328

### GenBank Accession Number:

BC000836

### GeneID (NCBI):

51646

### UNIPROT ID:

P62699

### Full Name:

yippee-like 5 (Drosophila)

### Calculated MW:

121 aa, 14 kDa

### Observed MW:

14 kDa

### Purification Method:

Antigen affinity purification

### Recommended Dilutions:

WB 1:1000-1:4000

IHC 1:50-1:500

## Applications

### Tested Applications:

WB, IHC, ELISA

### Cited Applications:

WB, IF

### Species Specificity:

human, mouse, rat

### Cited Species:

human, mouse, zebrafish

**Note-IHC: suggested antigen retrieval with TE buffer pH 9.0; (\*) Alternatively, antigen retrieval may be performed with citrate buffer pH 6.0**

### Positive Controls:

WB : mouse brain tissue, mouse testis tissue, rat brain tissue

IHC : mouse testis tissue,

## Background Information

YPEL5 (Protein yippee-like 5) belongs to the yippee family and is involved in a certain cell division-related function. During cell cycle, YPEL5 protein is detected at different subcellular localizations; at interphase, it is located in the nucleus and centrosome, then it changes location sequentially to spindle poles, mitotic spindle, and spindle midzone during mitosis, and finally transfers to midbody at cytokinesis (PMID:20580816).

## Notable Publications

Author	Pubmed ID	Journal	Application
Dan Zhou	33411363	Mol Oncol	WB
Nelson V Simwela	39472457	Nat Commun	WB
Nelson V Simwela	38766174	bioRxiv	WB

## Storage

### Storage:

Store at -20°C. Stable for one year after shipment.

### Storage Buffer:

PBS with 0.02% sodium azide and 50% glycerol pH 7.3.

Aliquoting is unnecessary for -20°C storage

\*\*\* 20ul sizes contain 0.1% BSA

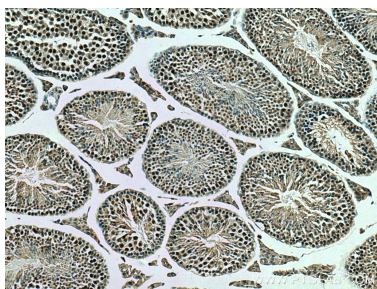
For technical support and original validation data for this product please contact:

T: 1 (888) 4PTGLAB (1-888-478-4522) (toll free in USA), or 1(312) 455-8498 (outside USA)

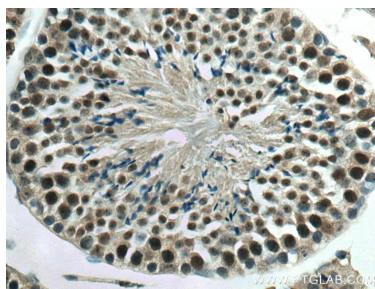
E: [proteintech@ptglab.com](mailto:proteintech@ptglab.com)  
W: [ptglab.com](http://ptglab.com)

This product is exclusively available under Proteintech Group brand and is not available to purchase from any other manufacturer.

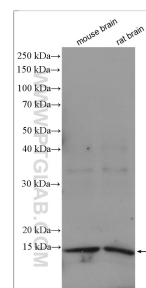
## Selected Validation Data



Immunohistochemical analysis of paraffin-embedded mouse testis tissue slide using 11730-1-AP (YPEL5 antibody) at dilution of 1:200 (under 10x lens). Heat mediated antigen retrieval with Tris-EDTA buffer (pH 9.0).



Immunohistochemical analysis of paraffin-embedded mouse testis tissue slide using 11730-1-AP (YPEL5 antibody) at dilution of 1:200 (under 40x lens). Heat mediated antigen retrieval with Tris-EDTA buffer (pH 9.0).



Various lysates were subjected to SDS PAGE followed by western blot with 11730-1-AP (YPEL5 antibody) at dilution of 1:2000 incubated at room temperature for 1.5 hours.