

For Research Use Only

# BCL7B Polyclonal antibody

Catalog Number: 11740-1-AP

Featured Product

4 Publications



## Basic Information

### Catalog Number:

11740-1-AP

### Size:

150ul, Concentration: 400 ug/ml by Nanodrop and 247 ug/ml by Bradford method using BSA as the standard;

### Source:

Rabbit

### Isotype:

IgG

### Immunogen Catalog Number:

AG2333

### GenBank Accession Number:

BC000956

### GeneID (NCBI):

9275

### UNIPROT ID:

Q9BQE9

### Full Name:

B-cell CLL/lymphoma 7B

### Calculated MW:

22 kDa

### Observed MW:

45 kDa

### Purification Method:

Antigen affinity purification

### Recommended Dilutions:

WB 1:500-1:2000

IHC 1:20-1:200

IF/ICC 1:20-1:200

## Applications

### Tested Applications:

WB, IHC, IF/ICC, ELISA

### Cited Applications:

WB, IHC, CoIP

### Species Specificity:

human

### Cited Species:

human, mouse

**Note-IHC: suggested antigen retrieval with TE buffer pH 9.0; (\*) Alternatively, antigen retrieval may be performed with citrate buffer pH 6.0**

### Positive Controls:

WB : HeLa cells, human brain tissue

IHC : human colon cancer tissue, human lung cancer tissue, human pancreas tissue

IF/ICC : HeLa cells,

## Notable Publications

Author	Pubmed ID	Journal	Application
Zhenxuan Shao	33027770	Aging (Albany NY)	WB
Daowen Li	33381272	Oxid Med Cell Longev	WB
Lena Wischhof	29213114	Sci Rep	WB, IHC

## Storage

### Storage:

Store at -20°C. Stable for one year after shipment.

### Storage Buffer:

PBS with 0.02% sodium azide and 50% glycerol pH 7.3.

Aliquoting is unnecessary for -20°C storage

\*\*\* 20ul sizes contain 0.1% BSA

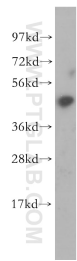
For technical support and original validation data for this product please contact:

T: 1 (888) 4PTGLAB (1-888-478-4522) (toll free in USA), or 1(312) 455-8498 (outside USA)

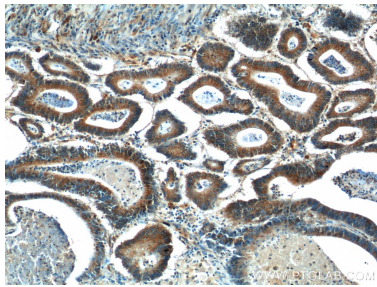
E: [proteintech@ptglab.com](mailto:proteintech@ptglab.com)  
W: [ptglab.com](http://ptglab.com)

This product is exclusively available under Proteintech Group brand and is not available to purchase from any other manufacturer.

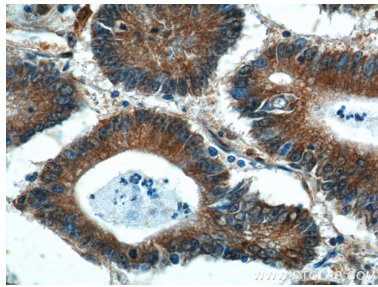
Selected Validation Data



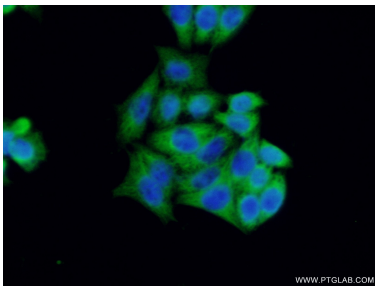
HeLa cells were subjected to SDS PAGE followed by western blot with 11740-1-AP (BCL7B antibody) at dilution of 1:400 incubated at room temperature for 1.5 hours.



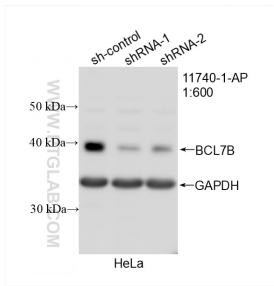
Immunohistochemical analysis of paraffin-embedded human colon cancer tissue slide using 11740-1-AP (BCL7B Antibody) at dilution of 1:50 (under 10x lens).



Immunohistochemical analysis of paraffin-embedded human colon cancer tissue slide using 11740-1-AP (BCL7B Antibody) at dilution of 1:50 (under 40x lens).



Immunofluorescent analysis of (-20°C Ethanol) fixed HeLa cells using 11740-1-AP (BCL7B antibody) at dilution of 1:50 and Alexa Fluor 488-conjugated AffiniPure Goat Anti-Rabbit IgG(H+L).



WB result of BCL7B antibody (11740-1-AP; 1:600; incubated at room temperature for 1.5 hours) with sh-Control and sh-BCL7B transfected HeLa cells.