

For Research Use Only

RAB2B Polyclonal antibody

Catalog Number: 11756-1-AP

3 Publications



Basic Information

Catalog Number:

11756-1-AP

Size:

150ul, Concentration: 650 ug/ml by Nanodrop and 373 ug/ml by Bradford method using BSA as the standard;

Source:

Rabbit

Isotype:

IgG

Immunogen Catalog Number:

AG2352

GenBank Accession Number:

BC020839

GeneID (NCBI):

84932

UNIPROT ID:

Q8WUD1

Full Name:

RAB2B, member RAS oncogene family

Calculated MW:

216 aa, 24 kDa

Observed MW:

24 kDa

Purification Method:

Antigen affinity purification

Recommended Dilutions:

WB 1:500-1:3000

IHC 1:50-1:500

Applications

Tested Applications:

WB, IHC, ELISA

Cited Applications:

WB, IHC

Species Specificity:

human, mouse, rat

Cited Species:

human, mouse

Note-IHC: suggested antigen retrieval with TE buffer pH 9.0; (*) Alternatively, antigen retrieval may be performed with citrate buffer pH 6.0

Positive Controls:

WB : human brain tissue, rat brain tissue, mouse kidney tissue, HeLa cells, mouse brain tissue

IHC : human stomach tissue,

Background Information

The protein belongs to the Rab family, members of which are small molecular weight guanosine triphosphatases (GTPases) that contain highly conserved domains involved in GTP binding and hydrolysis. The Rabs are membrane-bound proteins, involved in vesicular fusion and trafficking. This protein is a resident of pre-Golgi intermediates, and is required for protein transport from the endoplasmic reticulum (ER) to the Golgi complex. This antibody can recognize both RAB2A and RAB2B.

Notable Publications

Author	Pubmed ID	Journal	Application
Yuxin Sun	38926505	Nat Cell Biol	WB
Pauline Garcia	38848717	Dev Cell	WB
Xiubing Chen	36712921	Dis Markers	IHC

Storage

Storage:

Store at -20°C. Stable for one year after shipment.

Storage Buffer:

PBS with 0.02% sodium azide and 50% glycerol pH 7.3.

Aliquoting is unnecessary for -20°C storage

*** 20ul sizes contain 0.1% BSA

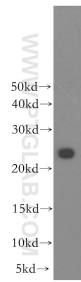
For technical support and original validation data for this product please contact:

T: 1 (888) 4PTGLAB (1-888-478-4522) (toll free in USA), or 1(312) 455-8498 (outside USA)

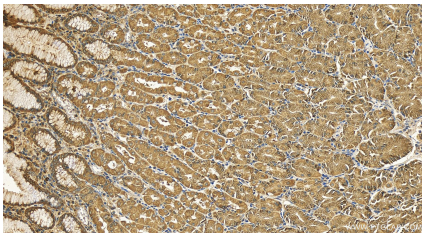
E: proteintech@ptglab.com
W: ptglab.com

This product is exclusively available under Proteintech Group brand and is not available to purchase from any other manufacturer.

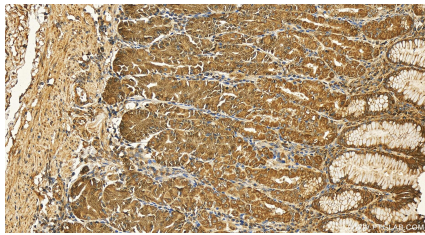
Selected Validation Data



human brain tissue were subjected to SDS PAGE followed by western blot with 11756-1-AP (RAB2B antibody) at dilution of 1:800 incubated at room temperature for 1.5 hours.



Immunohistochemical analysis of paraffin-embedded human stomach tissue slide using 11756-1-AP (RAB2B antibody) at dilution of 1:200 (under 20x lens). Heat mediated antigen retrieval with Tris-EDTA buffer (pH 9.0).



Immunohistochemical analysis of paraffin-embedded human stomach tissue slide using 11756-1-AP (RAB2B antibody) at dilution of 1:200 (under 20x lens). Heat mediated antigen retrieval with Tris-EDTA buffer (pH 9.0).