

For Research Use Only

SFRS6 Polyclonal antibody

Catalog Number: 11772-1-AP **3 Publications**



Basic Information

Catalog Number: 11772-1-AP	GenBank Accession Number: BC006832	Purification Method: Antigen affinity purification
Size: 150ul , Concentration: 450 µg/ml by Nanodrop;	GeneID (NCBI): 6431	Recommended Dilutions: WB 1:500-1:3000
Source: Rabbit	Full Name: splicing factor, arginine/serine-rich 6	
Isotype: IgG	Calculated MW: 344 aa, 40 kDa	
Immunogen Catalog Number: AG2412	Observed MW: 40 kDa	

Applications

Tested Applications: WB, ELISA	Positive Controls: WB : HeLa cells, MCF-7 cells
Cited Applications: WB	
Species Specificity: human	
Cited Species: human, mouse	

Background Information

SR proteins have a characteristic C-terminal Ser/Arg-rich repeat (RS domain) of variable length and constitute a family of highly conserved nuclear phosphoproteins that can function as both essential and alternative pre-mRNA splicing factors [PMID:7556075]. SRSF6 has a pivotal role in the TF exon 5 definition, an event essential for flTF biosynthesis. Besides, up- or down regulation of SRSF6 alters the splicing of several tumor suppressors and oncogenes to generate the oncogenic isoforms and reduce the tumor suppressive isoforms [PMID:23132731].

Notable Publications

Author	Pubmed ID	Journal	Application
Norihiro Okada	34082065	Gene	WB
Yuhan Chen	29942010	Nat Commun	WB
Norihiro Okada	35515992	Data Brief	WB

Storage

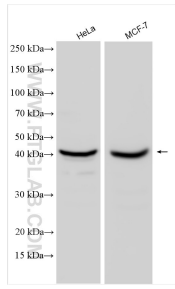
Storage:
Store at -20°C. Stable for one year after shipment.
Storage Buffer:
PBS with 0.02% sodium azide and 50% glycerol pH 7.3.
Aliquoting is unnecessary for -20°C storage

***** 20ul sizes contain 0.1% BSA**

For technical support and original validation data for this product please contact:
T: 1 (888) 4PTGLAB (1-888-478-4522) (toll free in USA), or 1(312) 455-8498 (outside USA)
E: proteintech@ptglab.com
W: ptglab.com

This product is exclusively available under Proteintech Group brand and is not available to purchase from any other manufacturer.

Selected Validation Data



Various lysates were subjected to SDS PAGE followed by western blot with 11772-1-AP (SFRS6 antibody) at dilution of 1:1500 incubated at room temperature for 1.5 hours.