

For Research Use Only

NA14 Polyclonal antibody

Catalog Number: 11797-1-AP **5 Publications**



Basic Information

Catalog Number: 11797-1-AP	GenBank Accession Number: BC000864	Purification Method: Antigen affinity purification
Size: 150ul , Concentration: 350 µg/ml by Nanodrop and 220 µg/ml by Bradford method using BSA as the standard;	GeneID (NCBI): 8636	Recommended Dilutions: WB 1:500-1:3000 IHC 1:50-1:500
Source: Rabbit	Full Name: Sjogren syndrome nuclear autoantigen 1	
Isotype: IgG	Calculated MW: 119 aa, 14 kDa	
Immunogen Catalog Number: AG2367	Observed MW: 14 kDa	

Applications

Tested Applications: IHC, WB, ELISA	Positive Controls:
Cited Applications: IF, WB	WB : mouse testis tissue, rat testis tissue
Species Specificity: human, mouse, rat	IHC : human colon cancer tissue,
Cited Species: human, mouse	
Note-IHC: suggested antigen retrieval with TE buffer pH 9.0; (*) Alternatively, antigen retrieval may be performed with citrate buffer pH 6.0	

Background Information

SSNA1, also named as NA14 and DIP13, may be an important adaptor to target spastin activity at the centrosome. SSNA1 is a 14 kDa protein which localizes the basal bodies and flagella of human sperm cells and the centrosome of cells.

Notable Publications

Author	Pubmed ID	Journal	Application
Nishibu Takahiro T	23229118	Biosci Trends	WB
Uma Goyal	25390646	PLoS One	IF
Nitta Takayuki T	21343359	MBio	IF

Storage

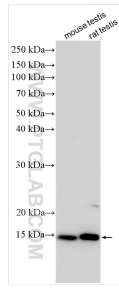
Storage:
Store at -20°C. Stable for one year after shipment.
Storage Buffer:
PBS with 0.02% sodium azide and 50% glycerol pH 7.3.
Aliquoting is unnecessary for -20°C storage

*** 20ul sizes contain 0.1% BSA

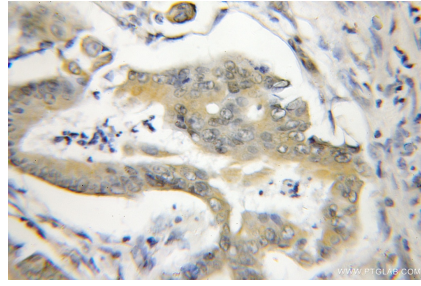
For technical support and original validation data for this product please contact:
T: 1 (888) 4PTGLAB (1-888-478-4522) (toll free in USA), or 1(312) 455-8498 (outside USA)
E: proteintech@ptglab.com
W: ptglab.com

This product is exclusively available under Proteintech Group brand and is not available to purchase from any other manufacturer.

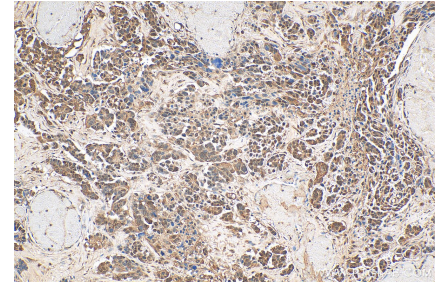
Selected Validation Data



Various lysates were subjected to SDS PAGE followed by western blot with 11797-1-AP (NA14 antibody) at dilution of 1:1500 incubated at room temperature for 1.5 hours.



Immunohistochemical analysis of paraffin-embedded human colon cancer using 11797-1-AP (NA14 antibody) at dilution of 1:50 (under 10x lens).



Immunohistochemical analysis of paraffin-embedded human colon cancer tissue slide using 11797-1-AP (NA14 antibody) at dilution of 1:200 (under 10x lens). Heat mediated antigen retrieval with Tris-EDTA buffer (pH 9.0).