

For Research Use Only

CYB5R1 Polyclonal antibody

Catalog Number: 11807-1-AP

2 Publications



Basic Information

Catalog Number:

11807-1-AP

Size:

150ul, Concentration: 400 ug/ml by Nanodrop;

Source:

Rabbit

Isotype:

IgG

Immunogen Catalog Number:

AG2475

GenBank Accession Number:

BC018732

GeneID (NCBI):

51706

UNIPROT ID:

Q9UHQ9

Full Name:

cytochrome b5 reductase 1

Calculated MW:

305 aa, 34 kDa

Observed MW:

34 kDa

Purification Method:

Antigen affinity purification

Recommended Dilutions:

WB 1:1000-1:4000

IP 0.5-4.0 ug for 1.0-3.0 mg of total protein lysate

IHC 1:20-1:200

IF/ICC 1:10-1:100

Applications

Tested Applications:

WB, IHC, IF/ICC, IP, ELISA

Cited Applications:

WB

Species Specificity:

human, mouse, rat

Cited Species:

human

Note-IHC: suggested antigen retrieval with TE buffer pH 9.0; (*) Alternatively, antigen retrieval may be performed with citrate buffer pH 6.0

Positive Controls:

WB : human placenta tissue, human brain tissue, PC-3 cells

IP : human placenta tissue,

IHC : human breast cancer tissue,

IF/ICC : PC-3 cells,

Notable Publications

Author	Pubmed ID	Journal	Application
Daisaku Yoshihara	36469660	Free Radic Res	WB
Tingting Zhao	36747266	J Transl Med	WB

Storage

Storage:

Store at -20°C. Stable for one year after shipment.

Storage Buffer:

PBS with 0.02% sodium azide and 50% glycerol pH 7.3.

Aliquoting is unnecessary for -20°C storage

*** 20ul sizes contain 0.1% BSA

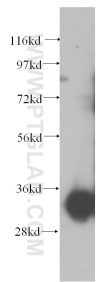
For technical support and original validation data for this product please contact:

T: 1 (888) 4PTGLAB (1-888-478-4522) (toll free in USA), or 1(312) 455-8498 (outside USA)

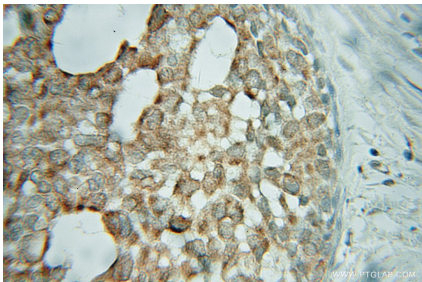
E: proteintech@ptglab.com
W: ptglab.com

This product is exclusively available under Proteintech Group brand and is not available to purchase from any other manufacturer.

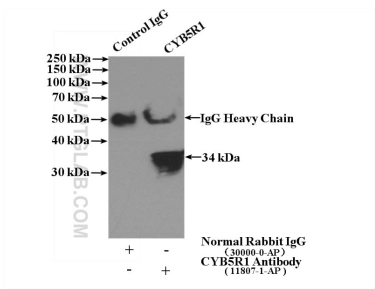
Selected Validation Data



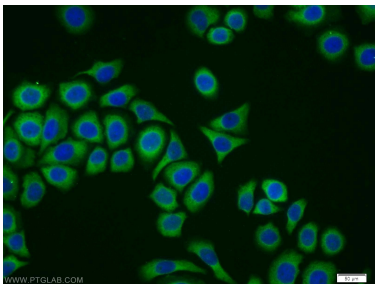
human placenta tissue were subjected to SDS PAGE followed by western blot with 11807-1-AP (CYB5R1 antibody) at dilution of 1:500 incubated at room temperature for 1.5 hours.



Immunohistochemical analysis of paraffin-embedded human breast cancer using 11807-1-AP (CYB5R1 antibody) at dilution of 1:50 (under 10x lens).



IP result of anti-CYB5R1 (IP:11807-1-AP, 4ug; Detection:11807-1-AP 1:1000) with human placenta tissue lysate 1520ug.



Immunofluorescent analysis of PC-3 cells using 11807-1-AP (CYB5R1 antibody) at dilution of 1:25 and Alexa Fluor 488-conjugated Goat Anti-Rabbit IgG(H+L).