

For Research Use Only

CIB1 Polyclonal antibody

Catalog Number: 11823-1-AP

Featured Product

11 Publications



Basic Information

Catalog Number:

11823-1-AP

Size:

150ul, Concentration: 700 ug/ml by Nanodrop and 250 ug/ml by Bradford method using BSA as the standard;

Source:

Rabbit

Isotype:

IgG

Immunogen Catalog Number:

AG2391

GenBank Accession Number:

BC000846

GeneID (NCBI):

10519

UNIPROT ID:

Q99828

Full Name:

calcium and integrin binding 1 (calmyrin)

Calculated MW:

22 kDa

Observed MW:

22 kDa

Purification Method:

Antigen affinity purification

Recommended Dilutions:

WB 1:500-1:2400

IP 0.5-4.0 ug for 1.0-3.0 mg of total protein lysate

IHC 1:20-1:200

IF/ICC 1:50-1:500

Applications

Tested Applications:

WB, IHC, IF/ICC, IP, ELISA

Cited Applications:

WB, IHC, IF, IP

Species Specificity:

human, mouse, rat

Cited Species:

human, mouse, rat

Note-IHC: suggested antigen retrieval with TE buffer pH 9.0; (*) Alternatively, antigen retrieval may be performed with citrate buffer pH 6.0

Positive Controls:

WB : human liver tissue, HepG2 cells, rat testis tissue

IP : mouse testis tissue,

IHC : human breast cancer tissue, human testis tissue, rat testis tissue

IF/ICC : A549 cells,

Background Information

CIB1(Calcium and integrin-binding protein 1) is also named as CIB, KIP, PRKDCIP. It is an EF-hand-containing protein that binds multiple effector proteins, including the platelet $\alpha\text{IIb}\beta 3$ integrin and several serine/threonine kinases and potentially modulates their function. It regulates platelet aggregation in hemostasis through a specific interaction with the αIIb cytoplasmic domain of platelet integrin $\alpha\text{IIb}\beta 3$.

Notable Publications

Author	Pubmed ID	Journal	Application
Chirosree Bandyopadhyay	25253349	J Virol	WB, IF
Yuanqi Liu	33082516	Cell Death Differ	IP
Magdalena Czeredys	24324398	Front Mol Neurosci	WB

Storage

Storage:

Store at -20°C. Stable for one year after shipment.

Storage Buffer:

PBS with 0.02% sodium azide and 50% glycerol pH 7.3.

Aliquoting is unnecessary for -20°C storage

*** 20ul sizes contain 0.1% BSA

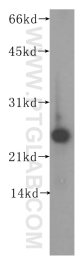
For technical support and original validation data for this product please contact:

T: 1 (888) 4PTGLAB (1-888-478-4522) (toll free in USA), or 1(312) 455-8498 (outside USA)

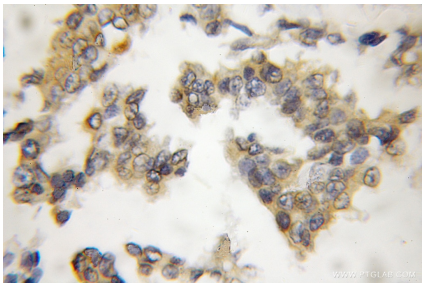
E: proteintech@ptglab.com
W: ptglab.com

This product is exclusively available under Proteintech Group brand and is not available to purchase from any other manufacturer.

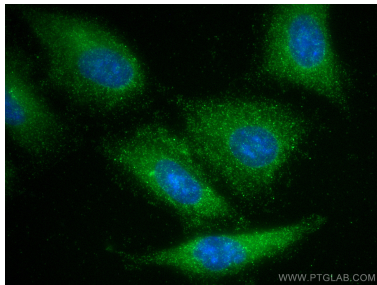
Selected Validation Data



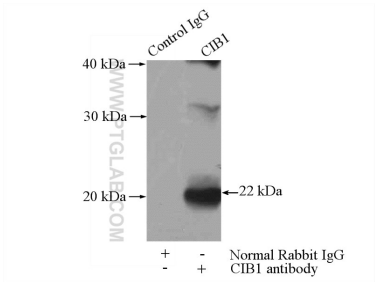
human liver tissue were subjected to SDS PAGE followed by western blot with 11823-1-AP (CIB1 antibody) at dilution of 1:400 incubated at room temperature for 1.5 hours.



Immunohistochemical analysis of paraffin-embedded human breast cancer using 11823-1-AP (CIB1 antibody) at dilution of 1:50 (under 10x lens).



Immunofluorescent analysis of (-20°C Methanol) fixed A549 cells using CIB1 antibody (11823-1-AP) at dilution of 1:200 and CoraLite®488-Conjugated Goat Anti-Rabbit IgG(H+L).



IP result of anti-CIB1 (IP:11823-1-AP, 4ug; Detection:11823-1-AP 1:300) with mouse testis tissue lysate 4000ug.