

For Research Use Only

# Caspase 4/P20/P10 Polyclonal antibody

Catalog Number: 11856-1-AP

Featured Product

16 Publications



## Basic Information

### Catalog Number:

11856-1-AP

### Size:

150ul, Concentration: 900 ug/ml by Nanodrop and 450 ug/ml by Bradford method using BSA as the standard;

### Source:

Rabbit

### Isotype:

IgG

### Immunogen Catalog Number:

AG2429

### GenBank Accession Number:

BC017839

### GeneID (NCBI):

837

### UNIPROT ID:

P49662

### Full Name:

caspase 4, apoptosis-related cysteine peptidase

### Calculated MW:

377 aa, 43 kDa

### Observed MW:

43-48 kDa

### Purification Method:

Antigen affinity purification

### Recommended Dilutions:

WB: 1:500-1:1000

IHC: 1:20-1:200

IF/ICC: 1:200-1:800

## Applications

### Tested Applications:

WB, IHC, IF/ICC, ELISA

### Cited Applications:

WB, IHC, IF

### Species Specificity:

human

### Cited Species:

human, rat

**Note-IHC: suggested antigen retrieval with TE buffer pH 9.0; (\*) Alternatively, antigen retrieval may be performed with citrate buffer pH 6.0**

### Positive Controls:

WB: SGC-7901 cells, THP-1 cells

IHC: human pancreas cancer tissue,

IF/ICC: HepG2 cells,

## Background Information

Caspase 4 (CASP4), is a member of the cysteine-aspartic acid protease (caspase) family. Sequential activation of caspases plays a central role in the execution-phase of cell apoptosis. Caspase 4 is able to cleave and activate its own precursor protein, as well as caspase 1 precursor. Overexpression of caspase 4 will induce cell apoptosis.

## Notable Publications

Author	Pubmed ID	Journal	Application
Liangmin Fu	36248876	Front Immunol	IHC, WB
Xiao-Lei Xin	31542790	Med Sci Monit	WB
Si Wen	34494385	J Diabetes Investig	

## Storage

### Storage:

Store at -20°C. Stable for one year after shipment.

### Storage Buffer:

PBS with 0.02% sodium azide and 50% glycerol, pH7.3

Aliquoting is unnecessary for -20°C storage

\*\*\* 20ul sizes contain 0.1% BSA

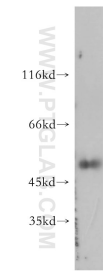
For technical support and original validation data for this product please contact:

T: 1 (888) 4PTGLAB (1-888-478-4522) (toll free in USA), or 1(312) 455-8498 (outside USA)

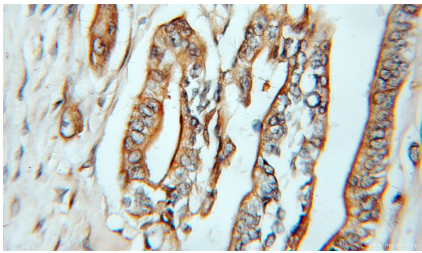
E: [proteintech@ptglab.com](mailto:proteintech@ptglab.com)  
W: [ptglab.com](http://ptglab.com)

This product is exclusively available under Proteintech Group brand and is not available to purchase from any other manufacturer.

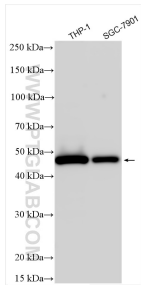
Selected Validation Data



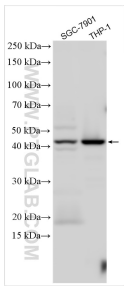
SGC-7901 cells were subjected to SDS PAGE followed by western blot with 11856-1-AP (Caspase 4/P20/P10 antibody) at dilution of 1:300 incubated at room temperature for 1.5 hours.



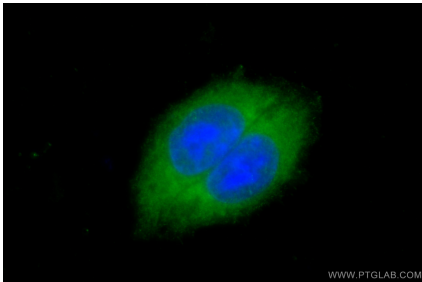
Immunohistochemical analysis of paraffin-embedded human pancreas cancer using 11856-1-AP (Caspase 4/P20/P10 antibody) at dilution of 1:50 (under 25x lens).



Various lysates were subjected to SDS PAGE followed by western blot with 11856-1-AP (Caspase 4/P20/P10 antibody) at dilution of 1:1000 incubated at room temperature for 1.5 hours.



SGC-7901 cells were subjected to SDS PAGE followed by western blot with 11856-1-AP (Caspase 4/P20/P10 antibody) at dilution of 1:1000 incubated at room temperature for 1.5 hours.



Immunofluorescent analysis of (-20°C Ethanol) fixed HepG2 cells using Caspase 4/P20/P10 antibody (11856-1-AP) at dilution of 1:400 and CoraLite®488-Conjugated AffiniPure Goat Anti-Rabbit IgG(H+L) (SA00013-2).