

For Research Use Only

# SH2D1A Polyclonal antibody

Catalog Number: 11868-1-AP **1 Publications**



## Basic Information

<b>Catalog Number:</b> 11868-1-AP	<b>GenBank Accession Number:</b> BC020732	<b>Purification Method:</b> Antigen affinity purification
<b>Size:</b> 150ul , Concentration: 800 µg/ml by Nanodrop and 400 µg/ml by Bradford method using BSA as the standard;	<b>GeneID (NCBI):</b> 4068	<b>Recommended Dilutions:</b> WB 1:500-1:3000
<b>Source:</b> Rabbit	<b>Full Name:</b> SH2 domain protein 1A	
<b>Isotype:</b> IgG	<b>Calculated MW:</b> 128 aa, 14 kDa	
<b>Immunogen Catalog Number:</b> AG2450	<b>Observed MW:</b> 16 kDa	

## Applications

<b>Tested Applications:</b> WB,ELISA	<b>Positive Controls:</b> WB : mouse thymus tissue, Jurkat cells
<b>Cited Applications:</b> WB	
<b>Species Specificity:</b> human, mouse, rat	
<b>Cited Species:</b> human	

## Background Information

SH2D1A, also named as DSHP and SAP, is an inhibitor of the SLAM self-association. It acts by blocking recruitment of the SH2-domain-containing signal-transduction molecule SHP-2 to a docking site in the SLAM cytoplasmic region. SH2D1A mediates interaction between FYN and SLAMF1. Defects in SH2D1A are a cause of lymphoproliferative syndrome X-linked type 1 (XLP1).

## Notable Publications

Author	Pubmed ID	Journal	Application
Ding Shu S	22549634	Arthritis Rheum	WB

## Storage

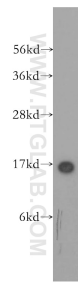
**Storage:**  
Store at -20°C. Stable for one year after shipment.  
**Storage Buffer:**  
PBS with 0.02% sodium azide and 50% glycerol pH 7.3.  
Aliquoting is unnecessary for -20°C storage

\*\*\* 20ul sizes contain 0.1% BSA

For technical support and original validation data for this product please contact:  
T: 1 (888) 4PTGLAB (1-888-478-4522) (toll free in USA), or 1(312) 455-8498 (outside USA)  
E: proteintech@ptglab.com  
W: ptglab.com

This product is exclusively available under Proteintech Group brand and is not available to purchase from any other manufacturer.

## Selected Validation Data



mouse thymus tissue were subjected to SDS PAGE followed by western blot with 11868-1-AP (SH2D1A antibody) at dilution of 1:500 incubated at room temperature for 1.5 hours.