

For Research Use Only

KLF10 Polyclonal antibody

Catalog Number: 11881-1-AP **5 Publications**



Basic Information

Catalog Number: 11881-1-AP	GenBank Accession Number: BC011538	Purification Method: Antigen affinity purification
Size: 150ul , Concentration: 200 µg/ml by Nanodrop and 133 µg/ml by Bradford method using BSA as the standard;	GeneID (NCBI): 7071	Recommended Dilutions: WB 1:200-1:1000 IP 0.5-4.0 ug for IP and 1:200-1:1000 for WB
Source: Rabbit	Full Name: Krueppel-like factor 10	IF 1:20-1:200
Isotype: IgG	Calculated MW: 469 aa, 51 kDa	
Immunogen Catalog Number: AG2482	Observed MW: 51 kDa	

Applications

Tested Applications: IF, IP, WB, ELISA	Positive Controls: WB : HeLa cells, Jurkat cells
Cited Applications: Chip, IF, IHC, WB	IP : Jurkat cells,
Species Specificity: human	IF : HeLa cells,
Cited Species: human, mouse, canine	

Background Information

KLF10 (Krueppel-like factor 10), also known as TIEG1, is a transcription factor that plays a role in the regulation of cell growth. It binds to the consensus sequence 5'-GGTGTG-3'. KLF10 plays a role in the response to TGFbeta (through the TGFbeta/Smad signalling pathway) and estrogen. In both cases, KLF10 induces or repressed gene transcription to enhance the TGFbeta/Smad signalling pathway, as well as other pathways, to regulate cell proliferation, differentiation and apoptosis. KLF10 has been shown to have a role in skeletal disease (osteopenia/osteoporosis), hypertrophic cardiomyopathy, and breast and prostate cancer. This antibody is a rabbit polyclonal antibody raised against a full-length human KLF10 protein, and specifically recognizes the 52kd KLF10 protein.

Notable Publications

Author	Pubmed ID	Journal	Application
Yongyun Li	34536440	J Mol Cell Cardiol	IF
Xiaoyin Ma	26984531	Sci Rep	Chip
Langlang Zheng	32156482	Acta Histochem	WB,IHC

Storage

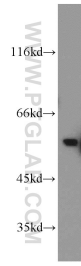
Storage:
Store at -20°C. Stable for one year after shipment.
Storage Buffer:
PBS with 0.02% sodium azide and 50% glycerol pH 7.3.
Aliquoting is unnecessary for -20°C storage

*** 20ul sizes contain 0.1% BSA

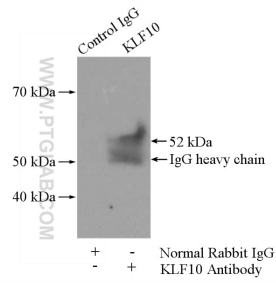
For technical support and original validation data for this product please contact:
T: 1 (888) 4PTGLAB (1-888-478-4522) (toll free in USA), or 1(312) 455-8498 (outside USA)
E: proteintech@ptglab.com
W: ptglab.com

This product is exclusively available under Proteintech Group brand and is not available to purchase from any other manufacturer.

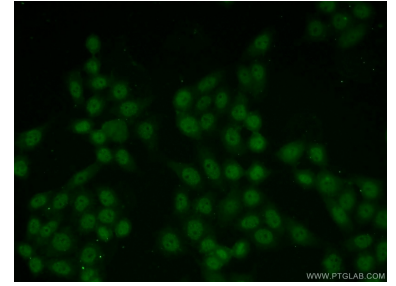
Selected Validation Data



HeLa cells were subjected to SDS PAGE followed by western blot with 11881-1-AP (KLF 10 antibody) at dilution of 1:100 incubated at room temperature for 1.5 hours.



IP Result of anti-KLF10 (IP:11881-1-AP, 4ug; Detection:11881-1-AP 1:300) with Jurkat cells lysate 2800ug.



Immunofluorescent analysis of HeLa cells using 11881-1-AP (KLF 10 antibody) at dilution of 1:50 and Alexa Fluor 488-conjugated AffiniPure Goat Anti-Rabbit IgG(H+L).