

For Research Use Only

GRAP2 Polyclonal antibody

Catalog Number: 11894-1-AP



Basic Information

Catalog Number: 11894-1-AP	GenBank Accession Number: BC026002	Purification Method: Antigen affinity purification
Size: 150ul , Concentration: 400 µg/ml by Nanodrop and 200 µg/ml by Bradford method using BSA as the standard;	GeneID (NCBI): 9402	Recommended Dilutions: WB 1:500-1:2000
Source: Rabbit	Full Name: GRB2-related adaptor protein 2	
Isotype: IgG	Calculated MW: 330 aa, 38 kDa	
Immunogen Catalog Number: AG2510	Observed MW: 38 kDa	

Applications

Tested Applications: WB, ELISA	Positive Controls: WB : K-562 cells,
Species Specificity: human, mouse, rat	

Background Information

GRAP2 is a member of the GRB2/Sem5/Drk family. This member is an adaptor-like protein involved in leukocyte-specific protein-tyrosine kinase signaling. Like its related family member, GRB2-related adaptor protein (GRAP), this protein contains an SH2 domain flanked by two SH3 domains. This protein interacts with other proteins, such as GRB2-associated binding protein 1 (GAB1) and the SLP-76 leukocyte protein (LCP2), through its SH3 domains. (refer to Wikipedia)

Storage

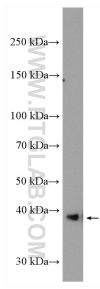
Storage:
Store at -20°C. Stable for one year after shipment.
Storage Buffer:
PBS with 0.02% sodium azide and 50% glycerol pH 7.3.
Aliquoting is unnecessary for -20°C storage

*** 20ul sizes contain 0.1% BSA

For technical support and original validation data for this product please contact:
T: 1 (888) 4PTGLAB (1-888-478-4522) (toll free in USA), or 1(312) 455-8498 (outside USA) E: proteintech@ptglab.com W: ptglab.com

This product is exclusively available under Proteintech Group brand and is not available to purchase from any other manufacturer.

Selected Validation Data



K-562 cells were subjected to SDS PAGE followed by western blot with 11894-1-AP (GRAP2 antibody) at dilution of 1:1000 incubated at room temperature for 1.5 hours.