

For Research Use Only

# RGR Polyclonal antibody

Catalog Number: 11904-1-AP



## Basic Information

<b>Catalog Number:</b> 11904-1-AP	<b>GenBank Accession Number:</b> BC008094	<b>Purification Method:</b> Antigen affinity purification
<b>Size:</b> 150ul , Concentration: 650 µg/ml by Nanodrop and 333 µg/ml by Bradford method using BSA as the standard;	<b>GeneID (NCBI):</b> 5995	<b>Recommended Dilutions:</b> WB 1:500-1:1000 IP 0.5-4.0 ug for IP and 1:200-1:1000 for WB
<b>Source:</b> Rabbit	<b>Full Name:</b> retinal G protein coupled receptor	<b>Calculated MW:</b> 32 kDa
<b>Isotype:</b> IgG	<b>Observed MW:</b> 32 kDa, 26 kDa	<b>IHC 1:500-1:2000</b>
<b>Immunogen Catalog Number:</b> AG2552		

## Applications

**Tested Applications:**  
FC, IHC, IP, WB, ELISA

**Species Specificity:**  
human, mouse, rat

**Note-IHC: suggested antigen retrieval with TE buffer pH 9.0; (\*) Alternatively, antigen retrieval may be performed with citrate buffer pH 6.0**

**Positive Controls:**

**WB :** human heart tissue,

**IP :** PC-3 cells,

**IHC :** mouse retina tissue, human prostate cancer tissue

## Background Information

RGR is a G protein-coupled receptor preferentially expressed at high levels in the retinal pigment epithelium (RPE) and Mueller cells of the neural retina. Like other opsins which bind retinaldehyde, it contains a conserved lysine residue in the seventh transmembrane domain. RGR acts as a photoisomerase to catalyze the conversion of all-trans-retinal to 11-cis-retinal. The reverse isomerization occurs with rhodopsin in retinal photoreceptor cells. The gene of PGR may be associated with autosomal recessive and autosomal dominant retinitis pigmentosa (arRP and adRP, respectively). Alternative splicing results in multiple transcript variants encoding different isoforms.

## Storage

**Storage:**

Store at -20°C. Stable for one year after shipment.

**Storage Buffer:**

PBS with 0.02% sodium azide and 50% glycerol pH 7.3.

Aliquoting is unnecessary for -20°C storage

**\*\*\* 20ul sizes contain 0.1% BSA**

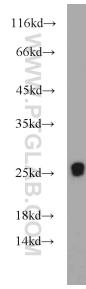
For technical support and original validation data for this product please contact:

T: 1 (888) 4PTGLAB (1-888-478-4522) (toll free in USA), or 1(312) 455-8498 (outside USA)

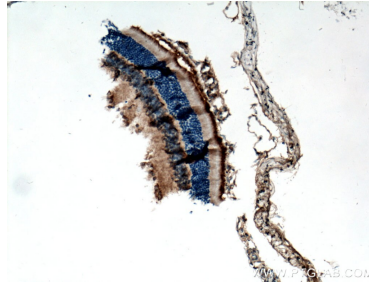
E: proteintech@ptglab.com  
W: ptglab.com

**This product is exclusively available under Proteintech Group brand and is not available to purchase from any other manufacturer.**

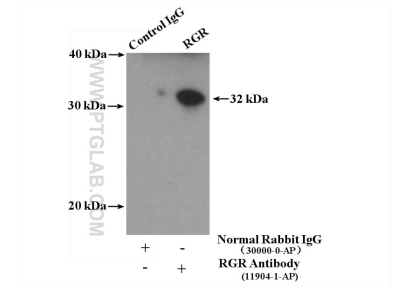
## Selected Validation Data



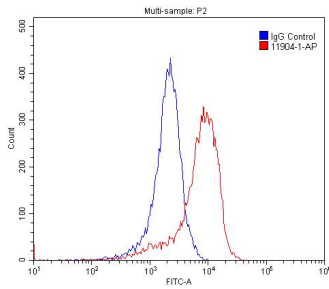
human heart tissue were subjected to SDS PAGE followed by western blot with 11904-1-AP (RGR antibody) at dilution of 1:500 incubated at room temperature for 1.5 hours.



Immunohistochemical analysis of paraffin-embedded mouse retina tissue slide using 11904-1-AP (RGR antibody) at dilution of 1:1000 (under 10x lens. Heat mediated antigen retrieval with Tris-EDTA buffer (pH 9.0).



IP Result of anti-RGR (IP:11904-1-AP, 4ug; Detection:11904-1-AP 1:300) with PC-3 cells lysate 4000ug.



1X10<sup>6</sup> PC-3 cells were stained with 0.2ug RGR antibody (11904-1-AP, red) and control antibody (blue). Fixed with 4% PFA blocked with 3% BSA (30 min). Alexa Fluor 488-conjugated AffiniPure Goat Anti-Rabbit IgG(H+L) with dilution 1:1500.