

For Research Use Only

ATF2 Polyclonal antibody

Catalog Number: 11908-1-AP

4 Publications



Basic Information

Catalog Number:

11908-1-AP

Size:

150ul, Concentration: 600 ug/ml by Nanodrop and 347 ug/ml by Bradford method using BSA as the standard;

Source:

Rabbit

Isotype:

IgG

Immunogen Catalog Number:

AG2581

GenBank Accession Number:

BC026175

GeneID (NCBI):

1386

UNIPROT ID:

P15336

Full Name:

activating transcription factor 2

Calculated MW:

209 aa, 23 kDa

Observed MW:

60 kDa, 64 kDa

Purification Method:

Antigen affinity purification

Recommended Dilutions:

WB 1:500-1:2000

IP 0.5-4.0 ug for 1.0-3.0 mg of total protein lysate

IF/ICC 1:200-1:800

Applications

Tested Applications:

WB, IF/ICC, IP, ELISA

Cited Applications:

WB, IHC, IF

Species Specificity:

human, mouse

Cited Species:

human, mouse, rat

Positive Controls:

WB: HEK-293T cells, mouse brain tissue, HeLa cells, K-562 cells

IP: mouse brain tissue,

IF/ICC: HeLa cells, PC-3 cells

Background Information

ATF2, also named as CREB2 and CREBP1, contains one bZIP domain and one C2H2-type zinc finger. It belongs to the bZIP family. ATF2 binds to the cAMP-responsive element (CRE), an octameric palindrome. It forms a homodimer or a heterodimer with c-Jun and stimulates CRE-dependent transcription. It is also a histone acetyltransferase (HAT) that specifically acetylates histones H2B and H4 in vitro; thus it may represent a class of sequence-specific factors that activate transcription by direct effects on chromatin components. ATF2 binds DNA as a dimer and can form a homodimer in the absence of DNA. It binds through its N-terminal region to UTF1 which acts as a coactivator of ATF2 transcriptional activity. This antibody can recognize all the isoforms of human ATF2. The molecular weight detected is larger than the theoretical value, which may be related to protein modification. About 65-68 kDa band detected in the articles (PMID: 19135136; PMID: 28628081).

Notable Publications

Author	Pubmed ID	Journal	Application
Zhi-yu Li	36302622	Korean J Physiol Pharmacol	WB
Tsung-Chang Tsai	29587440	Mar Drugs	WB
Qi Deng	35116466	Transl Cancer Res	WB, IF

Storage

Storage:

Store at -20°C. Stable for one year after shipment.

Storage Buffer:

PBS with 0.02% sodium azide and 50% glycerol pH 7.3.

Aliquoting is unnecessary for -20°C storage

*** 20ul sizes contain 0.1% BSA

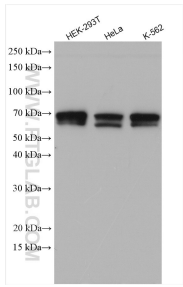
For technical support and original validation data for this product please contact:

T: 1 (888) 4PTGLAB (1-888-478-4522) (toll free in USA), or 1(312) 455-8498 (outside USA)

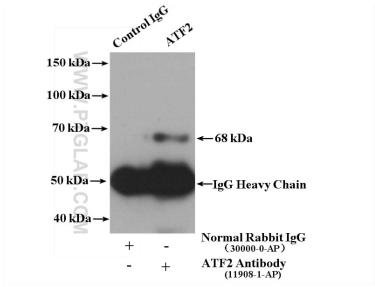
E: proteintech@ptglab.com
W: ptglab.com

This product is exclusively available under Proteintech Group brand and is not available to purchase from any other manufacturer.

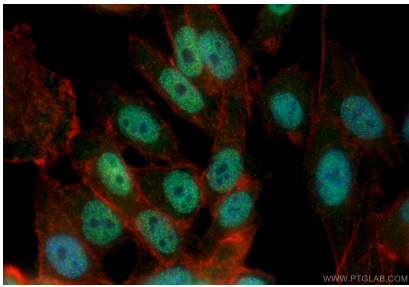
Selected Validation Data



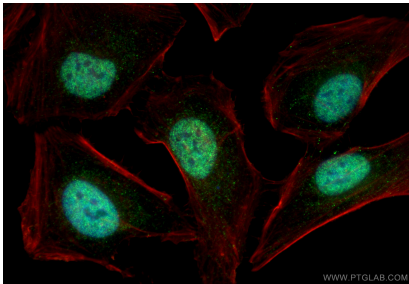
Various lysates were subjected to SDS PAGE followed by western blot with 11908-1-AP (ATF2 antibody) at dilution of 1:1000 incubated at room temperature for 1.5 hours.



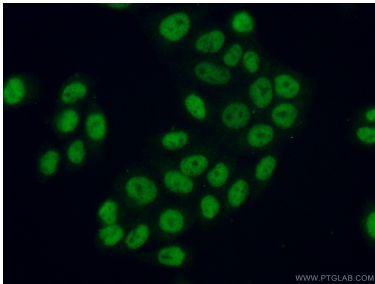
IP result of anti-ATF2 (IP:11908-1-AP, 4ug; Detection:11908-1-AP 1:300) with mouse brain tissue lysate 3200 ug.



Immunofluorescent analysis of (4% PFA) fixed PC-3 cells using ATF2 antibody (11908-1-AP) at dilution of 1:400 and Coralite®488-Conjugated Goat Anti-Rabbit IgG(H+L) (SA00013-2), CL594-phalloidin (red).



Immunofluorescent analysis of (4% PFA) fixed HeLa cells using ATF2 antibody (11908-1-AP) at dilution of 1:400 and Coralite®488-Conjugated Goat Anti-Rabbit IgG(H+L) (SA00013-2), CL594-phalloidin (red).



Immunofluorescent analysis of (10% Formaldehyde) fixed HeLa cells using 11908-1-AP (ATF2 antibody) at dilution of 1:50 and Alexa Fluor 488-conjugated AffiniPure Goat Anti-Rabbit IgG(H+L).