

For Research Use Only

PLRG1 Polyclonal antibody

Catalog Number: 11914-1-AP

Featured Product

2 Publications



Basic Information

Catalog Number: 11914-1-AP	GenBank Accession Number: BC020786	Purification Method: Antigen affinity purification
Size: 150ul, Concentration: 350 µg/ml by Nanodrop and 280 µg/ml by Bradford method using BSA as the standard;	GeneID (NCBI): 5356	Recommended Dilutions: WB 1:500-1:2000 IP 0.5-4.0 ug for IP and 1:500-1:2000 for WB IHC 1:50-1:500
Source: Rabbit	Full Name: pleiotropic regulator 1 (PRL1 homolog, Arabidopsis)	
Isotype: IgG	Calculated MW: 514 aa, 57 kDa	
Immunogen Catalog Number: AG2527	Observed MW: 55-60 kDa	

Applications

Tested Applications: IHC, IP, WB, ELISA	Positive Controls: WB : K-562 cells, HEK-293 cells, BxPC-3 cells
Cited Applications: WB	IP : HEK-293 cells,
Species Specificity: human	IHC : human brain tissue,
Cited Species: human	

Note-IHC: suggested antigen retrieval with TE buffer pH 9.0; (*) Alternatively, antigen retrieval may be performed with citrate buffer pH 6.0

Background Information

PLRG1, identified as a component of the CDC5L complex, is one spliceosomal protein highly conserved across species. It has been shown to be essential for pre-mRNA splicing in yeast and humans.

Notable Publications

Author	Pubmed ID	Journal	Application
Shuyan Liu	33731873	Cell Death Differ	WB
Shuai Hou	31216022	Nucleic Acids Res	WB

Storage

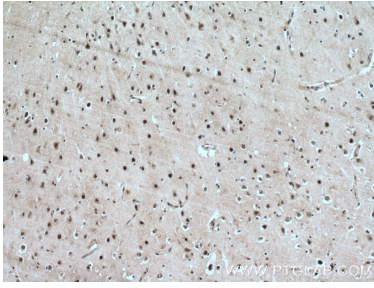
Storage:
Store at -20°C. Stable for one year after shipment.
Storage Buffer:
PBS with 0.02% sodium azide and 50% glycerol pH 7.3.
Aliquoting is unnecessary for -20°C storage

*** 20ul sizes contain 0.1% BSA

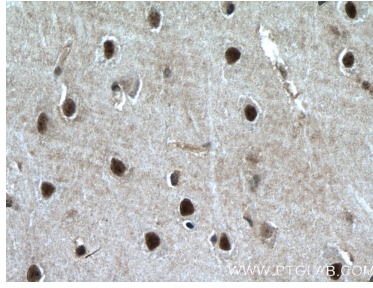
For technical support and original validation data for this product please contact:
T: 1 (888) 4PTGLAB (1-888-478-4522) (toll free in USA), or 1(312) 455-8498 (outside USA)
E: proteintech@ptglab.com
W: ptglab.com

This product is exclusively available under Proteintech Group brand and is not available to purchase from any other manufacturer.

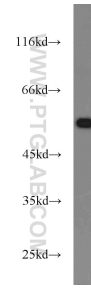
Selected Validation Data



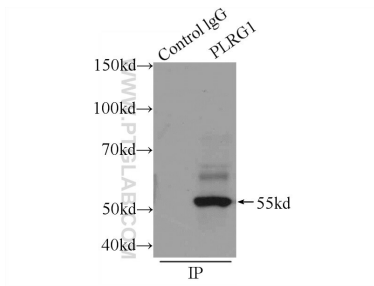
Immunohistochemical analysis of paraffin-embedded human brain tissue slide using 11914-1-AP (PLRG1 antibody) at dilution of 1:200 (under 10x lens). Heat mediated antigen retrieval with Tris-EDTA buffer (pH 9.0).



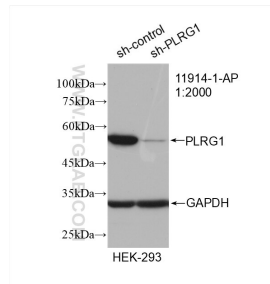
Immunohistochemical analysis of paraffin-embedded human brain tissue slide using 11914-1-AP (PLRG1 antibody) at dilution of 1:200 (under 40x lens). Heat mediated antigen retrieval with Tris-EDTA buffer (pH 9.0).



K-562 cells were subjected to SDS PAGE followed by western blot with 11914-1-AP (PLRG1 antibody) at dilution of 1:1000 incubated at room temperature for 1.5 hours.



IP Result of anti-PLRG1 (IP:11914-1-AP, 4ug; Detection:11914-1-AP 1:1000) with HEK-293 cells lysate 1400ug.



WB result of PLRG1 antibody (11914-1-AP; 1:2000; incubated at room temperature for 1.5 hours) with sh-Control and sh-PLRG1 transfected HEK-293 cells.