

For Research Use Only

# ERGIC2 Polyclonal antibody

Catalog Number: 11927-1-AP

Featured Product

1 Publications



## Basic Information

### Catalog Number:

11927-1-AP

### Size:

150ul, Concentration: 170 ug/ml by Nanodrop and 133 ug/ml by Bradford method using BSA as the standard;

### Source:

Rabbit

### Isotype:

IgG

### Immunogen Catalog Number:

AG2603

### GenBank Accession Number:

BC000887

### GeneID (NCBI):

51290

### UNIPROT ID:

Q96RQ1

### Full Name:

ERGIC and golgi 2

### Calculated MW:

377 aa, 43 kDa

### Observed MW:

45-50 kDa

### Purification Method:

Antigen affinity purification

### Recommended Dilutions:

WB 1:1000-1:6000

IP 0.5-4.0 ug for 1.0-3.0 mg of total protein lysate

IHC 1:20-1:200

IF/ICC 1:50-1:500

## Applications

### Tested Applications:

WB, IHC, IF/ICC, IP, ELISA

### Species Specificity:

human

**Note-IHC: suggested antigen retrieval with TE buffer pH 9.0; (\*) Alternatively, antigen retrieval may be performed with citrate buffer pH 6.0**

### Positive Controls:

WB: HeLa cells, HepG2 cells, MCF-7 cells

IP: HepG2 cells,

IHC: human prostate cancer tissue,

IF/ICC: HepG2 cells,

## Background Information

ERGIC2, also named as Endoplasmic reticulum-Golgi intermediate compartment protein 2 or PTX1, is a 377 amino acid protein, which belongs to the ERGIC family. ERGIC2 is ubiquitously expressed in many tissues. ERGIC2 localizes in the endoplasmic reticulum-Golgi intermediate compartment membrane and may play a role in transport between endoplasmic reticulum and Golgi. ERGIC2 is involved in protein transportation, and participated in the elongation factor 1 alpha regulated mechanisms.

## Notable Publications

Author	Pubmed ID	Journal	Application
Kwok Simon C M SC	24303950	DNA Cell Biol	

## Storage

### Storage:

Store at -20°C. Stable for one year after shipment.

### Storage Buffer:

PBS with 0.02% sodium azide and 50% glycerol pH 7.3.

Aliquoting is unnecessary for -20°C storage

\*\*\* 20ul sizes contain 0.1% BSA

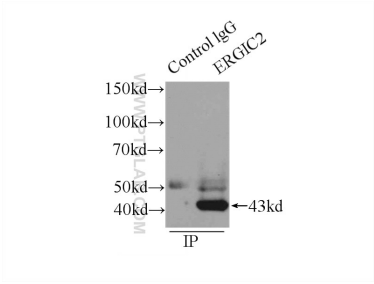
For technical support and original validation data for this product please contact:

T: 1 (888) 4PTGLAB (1-888-478-4522) (toll free in USA), or 1(312) 455-8498 (outside USA)

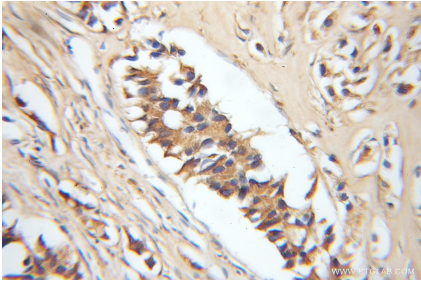
E: [proteintech@ptglab.com](mailto:proteintech@ptglab.com)  
W: [ptglab.com](http://ptglab.com)

This product is exclusively available under Proteintech Group brand and is not available to purchase from any other manufacturer.

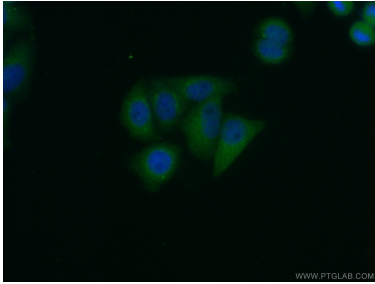
Selected Validation Data



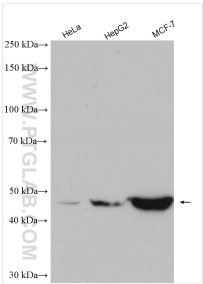
IP result of anti-ERGIC2 (IP:11927-1-AP, 4ug; Detection:11927-1-AP 1:1000) with HepG2 cells lysate 2900ug.



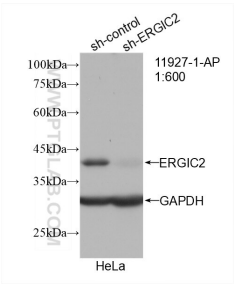
Immunohistochemical analysis of paraffin-embedded human prostate cancer using 11927-1-AP (ERGIC2 antibody) at dilution of 1:50 (under 10x lens).



Immunofluorescent analysis of (10% Formaldehyde) fixed HepG2 cells using 11927-1-AP (ERGIC2 antibody) at dilution of 1:50 and Alexa Fluor 488-conjugated Goat Anti-Rabbit IgG(H+L).



Various lysates were subjected to SDS PAGE followed by western blot with 11927-1-AP (ERGIC2 antibody) at dilution of 1:3000 incubated at room temperature for 1.5 hours.



WB result of ERGIC2 antibody (11927-1-AP; 1:600; incubated at room temperature for 1.5 hours) with sh-Control and sh-ERGIC2 transfected HeLa cells.