

For Research Use Only

# ATF1 Polyclonal antibody

Catalog Number: 11946-1-AP

Featured Product

9 Publications



## Basic Information

### Catalog Number:

11946-1-AP

### Size:

150ul, Concentration: 400 ug/ml by Nanodrop and 227 ug/ml by Bradford method using BSA as the standard;

### Source:

Rabbit

### Isotype:

IgG

### Immunogen Catalog Number:

AG2548

### GenBank Accession Number:

BC029619

### GeneID (NCBI):

466

### UNIPROT ID:

P18846

### Full Name:

activating transcription factor 1

### Calculated MW:

271 aa, 29 kDa

### Observed MW:

35 kDa

### Purification Method:

Antigen affinity purification

### Recommended Dilutions:

WB 1:500-1:1000

IP 0.5-4.0 ug for 1.0-3.0 mg of total protein lysate

IF/ICC 1:50-1:500

## Applications

### Tested Applications:

WB, IF/ICC, IP, ELISA

### Cited Applications:

WB, IHC

### Species Specificity:

human

### Cited Species:

human, mouse

### Positive Controls:

WB : HeLa cells, A431 cells, human brain tissue

IP : HeLa cells,

IF/ICC : HeLa cells,

## Background Information

TFs play a vital role in maintaining cell homeostasis by combining DNA regulatory sequences to regulate gene transcription rates. Activating transcription factor 1 (ATF1) is a member of the ATF/CREB family of transcription factors (TFs), specifically interacting with the consensus ATF/CRE site 'TGACGTCA' (PMID: 28032861). ATF1 transcriptionally regulates the expressions of target genes to mediate various cellular processes, and ATF1 effects the progression of tumors (including lung cancer, colorectal cancer, and nasopharyngeal carcinoma).

## Notable Publications

Author	Pubmed ID	Journal	Application
Salma Aktar	36154610	J Virol	WB
Yanjie Tan	31614673	Cells	WB
Yanni Ge	34853720	Mol Ther Nucleic Acids	WB

## Storage

### Storage:

Store at -20°C. Stable for one year after shipment.

### Storage Buffer:

PBS with 0.02% sodium azide and 50% glycerol pH 7.3.

Aliquoting is unnecessary for -20°C storage

\*\*\* 20ul sizes contain 0.1% BSA

For technical support and original validation data for this product please contact:

T: 1 (888) 4PTGLAB (1-888-478-4522) (toll free in USA), or 1(312) 455-8498 (outside USA)

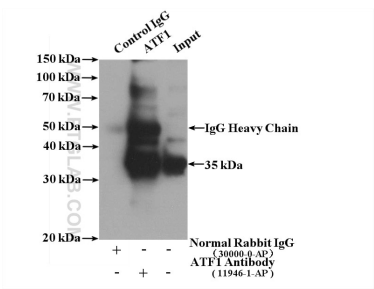
E: [proteintech@ptglab.com](mailto:proteintech@ptglab.com)  
W: [ptglab.com](http://ptglab.com)

This product is exclusively available under Proteintech Group brand and is not available to purchase from any other manufacturer.

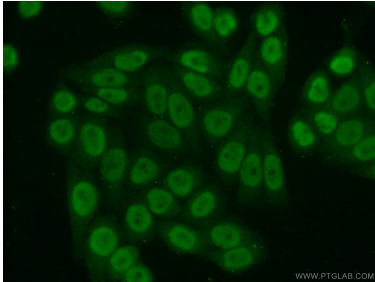
Selected Validation Data



HeLa cells were subjected to SDS PAGE followed by western blot with 11946-1-AP (ATF1 antibody) at dilution of 1:500 incubated at room temperature for 1.5 hours.



IP result of anti-ATF1 (IP:11946-1-AP, 4ug; Detection:11946-1-AP 1:500) with HeLa cells lysate 3200ug.



Immunofluorescent analysis of (10% Formaldehyde) fixed HeLa cells using 11946-1-AP (ATF1 antibody) at dilution of 1:50 and Alexa Fluor 488-conjugated AffiniPure Goat Anti-Rabbit IgG(H+L).