

For Research Use Only

RHCG Polyclonal antibody

Catalog Number: 11949-1-AP

Featured Product

2 Publications



Basic Information

Catalog Number:

11949-1-AP

Size:

150ul, Concentration: 450 ug/ml by Nanodrop and 320 ug/ml by Bradford method using BSA as the standard;

Source:

Rabbit

Isotype:

IgG

Immunogen Catalog Number:

AG2493

GenBank Accession Number:

BC030965

GeneID (NCBI):

51458

UNIPROT ID:

Q9UBD6

Full Name:

Rh family, C glycoprotein

Calculated MW:

479 aa, 53 kDa

Observed MW:

52-55 kDa

Purification Method:

Antigen affinity purification

Recommended Dilutions:

WB 1:500-1:1000

IHC 1:50-1:500

Applications

Tested Applications:

WB, IHC, ELISA

Cited Applications:

WB, IHC, IF, ColP

Species Specificity:

human, mouse, rat

Cited Species:

human, mouse

Note-IHC: suggested antigen retrieval with TE buffer pH 9.0; (*) Alternatively, antigen retrieval may be performed with citrate buffer pH 6.0

Positive Controls:

WB : HEK-293 cells, human kidney tissue

IHC : human kidney tissue, human pancreas cancer tissue

Notable Publications

Author	Pubmed ID	Journal	Application
Soline Bourgeois	29054531	Kidney Int	WB,IF,ColP
Wenguang Xu	31170090	Aging (Albany NY)	WB,IHC

Storage

Storage:

Store at -20°C. Stable for one year after shipment.

Storage Buffer:

PBS with 0.02% sodium azide and 50% glycerol pH 7.3.

Aliquoting is unnecessary for -20°C storage

*** 20ul sizes contain 0.1% BSA

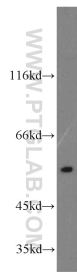
For technical support and original validation data for this product please contact:

T: 1 (888) 4PTGLAB (1-888-478-4522) (toll free in USA), or 1(312) 455-8498 (outside USA)

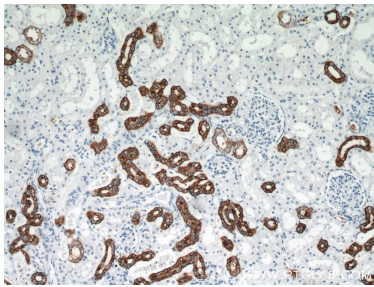
E: proteintech@ptglab.com
W: ptglab.com

This product is exclusively available under Proteintech Group brand and is not available to purchase from any other manufacturer.

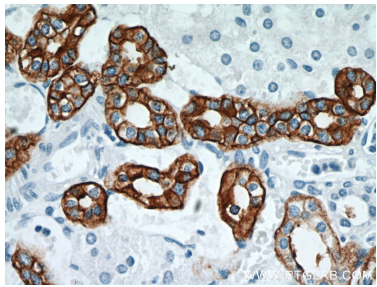
Selected Validation Data



HEK-293 cells were subjected to SDS PAGE followed by western blot with 11949-1-AP (RHCG antibody) at dilution of 1:300 incubated at room temperature for 1.5 hours.



Immunohistochemical analysis of paraffin-embedded human kidney using 11949-1-AP (RHCG antibody) at dilution of 1:200 (under 10x lens).



Immunohistochemical analysis of paraffin-embedded human kidney using 11949-1-AP (RHCG antibody) at dilution of 1:200 (under 40x lens).