

For Research Use Only

# CBP20 Polyclonal antibody

Catalog Number: 11950-1-AP

4 Publications



## Basic Information

<b>Catalog Number:</b> 11950-1-AP	<b>GenBank Accession Number:</b> BC001255	<b>Purification Method:</b> Antigen affinity purification
<b>Size:</b> 150ul, Concentration: 1300 ug/ml by Nanodrop and 400 ug/ml by Bradford method using BSA as the standard;	<b>GeneID (NCBI):</b> 22916	<b>Recommended Dilutions:</b> WB 1:500-1:1000 IHC 1:250-1:1000 IF/ICC 1:200-1:800
<b>Source:</b> Rabbit	<b>UNIPROT ID:</b> P52298	
<b>Isotype:</b> IgG	<b>Full Name:</b> nuclear cap binding protein subunit 2, 20kDa	
<b>Immunogen Catalog Number:</b> AG2550	<b>Calculated MW:</b> 156 aa, 18 kDa	
	<b>Observed MW:</b> 18 kDa	

## Applications

<b>Tested Applications:</b> WB, IHC, IF/ICC, ELISA	<b>Positive Controls:</b>
<b>Cited Applications:</b> WB, IHC, RIP	<b>WB :</b> human heart tissue,
<b>Species Specificity:</b> human, mouse, rat	<b>IHC :</b> mouse brain tissue,
<b>Cited Species:</b> human	<b>IF/ICC :</b> HeLa cells,

**Note-IHC: suggested antigen retrieval with TE buffer pH 9.0; (\*) Alternatively, antigen retrieval may be performed with citrate buffer pH 6.0**

## Notable Publications

Author	Pubmed ID	Journal	Application
Mio Iwasaki	35573189	iScience	WB
Zheng Li	39406241	Dev Cell	
Fei Li	39624324	Heliyon	RIP

## Storage

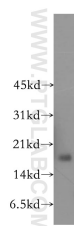
**Storage:**  
Store at -20°C. Stable for one year after shipment.  
**Storage Buffer:**  
PBS with 0.02% sodium azide and 50% glycerol pH 7.3.  
Aliquoting is unnecessary for -20°C storage

\*\*\* 20ul sizes contain 0.1% BSA

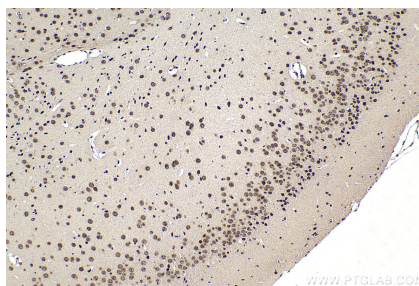
For technical support and original validation data for this product please contact:  
T: 1 (888) 4PTGLAB (1-888-478-4522) (toll free in USA), or 1(312) 455-8498 (outside USA)  
E: proteintech@ptglab.com  
W: ptglab.com

This product is exclusively available under Proteintech Group brand and is not available to purchase from any other manufacturer.

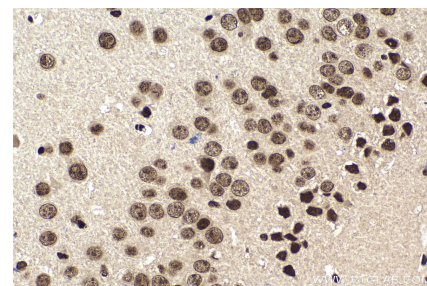
## Selected Validation Data



human heart tissue were subjected to SDS PAGE followed by western blot with 11950-1-AP (CBP20 antibody) at dilution of 1:500 incubated at room temperature for 1.5 hours.



Immunohistochemical analysis of paraffin-embedded mouse brain tissue slide using 11950-1-AP (CBP20 antibody) at dilution of 1:500 (under 10x lens). Heat mediated antigen retrieval with Tris-EDTA buffer (pH 9.0).



Immunohistochemical analysis of paraffin-embedded mouse brain tissue slide using 11950-1-AP (CBP20 antibody) at dilution of 1:500 (under 40x lens). Heat mediated antigen retrieval with Tris-EDTA buffer (pH 9.0).



Immunofluorescent analysis of (4% PFA) fixed HeLa cells using CBP20 antibody (11950-1-AP) at dilution of 1:400 and CoraLite® 488-Conjugated AffiniPure Goat Anti-Rabbit IgG(H+L), CL594-phalloidin (red).