

For Research Use Only

# NPM3 Polyclonal antibody

Catalog Number: 11960-1-AP **3 Publications**



## Basic Information

<b>Catalog Number:</b> 11960-1-AP	<b>GenBank Accession Number:</b> BC054868	<b>Purification Method:</b> Antigen affinity purification
<b>Size:</b> 150ul, Concentration: 700 ug/ml by Nanodrop and 287 ug/ml by Bradford method using BSA as the standard;	<b>GeneID (NCBI):</b> 10360	<b>Recommended Dilutions:</b> WB 1:1000-1:8000
<b>Source:</b> Rabbit	<b>UNIPROT ID:</b> O75607	IP 0.5-4.0 ug for 1.0-3.0 mg of total protein lysate
<b>Isotype:</b> IgG	<b>Full Name:</b> nucleophosmin/nucleoplasmin, 3	IHC 1:50-1:500
<b>Immunogen Catalog Number:</b> AG2564	<b>Calculated MW:</b> 178 aa, 19 kDa	IF/ICC 1:20-1:200
	<b>Observed MW:</b> 25 kDa	

## Applications

<b>Tested Applications:</b> WB, IHC, IF/ICC, IP, ELISA	<b>Positive Controls:</b>
<b>Cited Applications:</b> WB, IHC, IF	WB : HeLa cells,
<b>Species Specificity:</b> human, mouse, rat	IP : HeLa cells,
<b>Cited Species:</b> human	IHC : human lymphoma tissue,
	IF/ICC : HeLa cells,

**Note-IHC: suggested antigen retrieval with TE buffer pH 9.0; (\*) Alternatively, antigen retrieval may be performed with citrate buffer pH 6.0**

## Background Information

NPM3, a member of the nucleophosmin/ nucleoplasmin family, lacks intrinsic histone chaperone activity, inhibits histone assembly activity of NPM1 in vitro, and dramatically enhances transcription in a cellular system (PMID: 20073534). Human NPM3 is an abundant and widely expressed protein with primarily nuclear localization. The NPM3 protein migrated in SDS-PAGE gels as a doublet with apparent molecular masses of 25 and 27 kDa, which are larger than the 20.5 kDa mass predicted by the deduced amino acid sequence including the HA tag (PMID: 11722795). The NPM3 antibody can detect two bands with MW between 20-27 kDa.

## Notable Publications

Author	Pubmed ID	Journal	Application
Andrea Martisova	39300184	Sci Rep	WB
Amani Issa	38858088	Life Sci Alliance	
Han Wang	38029539	Cancer Lett	WB,IHC,IF

## Storage

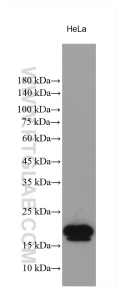
**Storage:**  
Store at -20°C. Stable for one year after shipment.  
**Storage Buffer:**  
PBS with 0.02% sodium azide and 50% glycerol pH 7.3.  
Aliquoting is unnecessary for -20°C storage

\*\*\* 20ul sizes contain 0.1% BSA

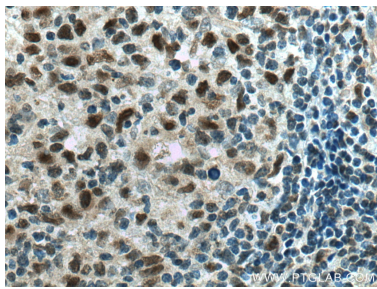
For technical support and original validation data for this product please contact:  
T: 1 (888) 4PTGLAB (1-888-478-4522) (toll free in USA), or 1(312) 455-8498 (outside USA)  
E: proteintech@ptglab.com  
W: ptglab.com

This product is exclusively available under Proteintech Group brand and is not available to purchase from any other manufacturer.

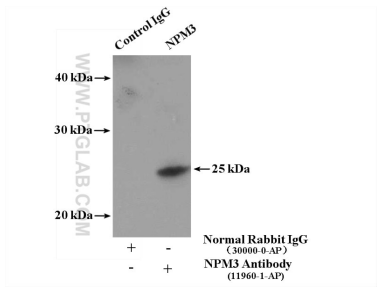
Selected Validation Data



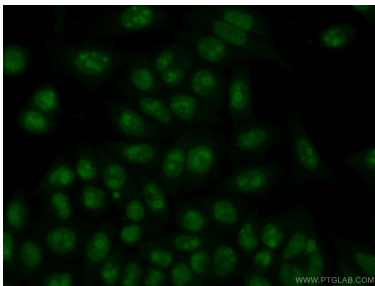
Hela lysates were subjected to SDS PAGE followed by western blot with 11960-1-AP (NPM3 antibody) at dilution of 1:4000 incubated at room temperature for 1.5 hours.



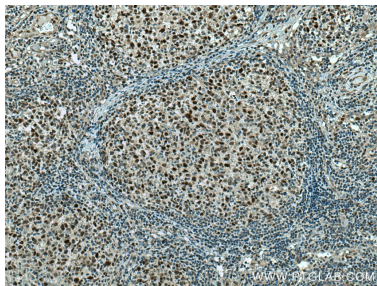
Immunohistochemical analysis of paraffin-embedded human lymphoma tissue slide using 11960-1-AP (NPM3 antibody) at dilution of 1:200 (under 40x lens). Heat mediated antigen retrieval with Tris-EDTA buffer (pH 9.0).



IP result of anti-NPM3 (IP:11960-1-AP, 4ug; Detection:11960-1-AP 1:500) with HeLa cells lysate 3400ug.



Immunofluorescent analysis of (10% Formaldehyde) fixed HeLa cells using 11960-1-AP (NPM3 antibody) at dilution of 1:50 and Alexa Fluor 488-conjugated Goat Anti-Rabbit IgG(H+L).



Immunohistochemical analysis of paraffin-embedded human lymphoma tissue slide using 11960-1-AP (NPM3 antibody) at dilution of 1:200 (under 10x lens). Heat mediated antigen retrieval with Tris-EDTA buffer (pH 9.0).