

For Research Use Only

TIMM13 Polyclonal antibody

Catalog Number: 11973-1-AP

6 Publications



Basic Information

Catalog Number:

11973-1-AP

Size:

150ul, Concentration: 650 ug/ml by Nanodrop;

Source:

Rabbit

Isotype:

IgG

Immunogen Catalog Number:

AG2596

GenBank Accession Number:

BC008607

GeneID (NCBI):

26517

UNIPROT ID:

Q9Y5L4

Full Name:

translocase of inner mitochondrial membrane 13 homolog (yeast)

Calculated MW:

95 aa, 11 kDa

Observed MW:

11 kDa

Purification Method:

Antigen affinity purification

Recommended Dilutions:

WB 1:500-1:1000

IHC 1:50-1:500

IF/ICC 1:50-1:500

Applications

Tested Applications:

WB, IHC, IF/ICC, ELISA

Cited Applications:

WB, IF

Species Specificity:

human

Cited Species:

human

Positive Controls:

WB : HeLa cells, HepG2 cells

IHC : human liver cancer tissue,

IF/ICC : HepG2 cells, HeLa cells

Note-IHC: suggested antigen retrieval with TE buffer pH 9.0; (*) Alternatively, antigen retrieval may be performed with citrate buffer pH 6.0

Background Information

TIMM13 gene, also known as TIM13, TIM13B, TIM M13A or TIMM13B, encodes mitochondrial import inner membrane translocase subunit Tim13 belonging to the small Tim family. TIM13 functions as mitochondrial intermembrane chaperone that participates in the import and insertion of some multi-pass transmembrane proteins into the mitochondrial inner membrane. Proteins of the intermembrane space (IMS) of mitochondria are typically synthesized without presequences. TIM13 contains four conserved cysteine residues that bind a zinc ion as cofactor. Import of TIM13 did not depend on the membrane potential or ATP hydrolysis. Upon import into mitochondria TIM13 adopted a stably folded conformation in the IMS.

Notable Publications

Author	Pubmed ID	Journal	Application
Yilin Kang	31682224	Elife	WB
Rashim Pal Singh	32416059	Cell Stem Cell	WB
Addison Neighbors	31903733	Mol Genet Genomic Med	WB

Storage

Storage:

Store at -20°C. Stable for one year after shipment.

Storage Buffer:

PBS with 0.02% sodium azide and 50% glycerol pH 7.3.

Aliquoting is unnecessary for -20°C storage

*** 20ul sizes contain 0.1% BSA

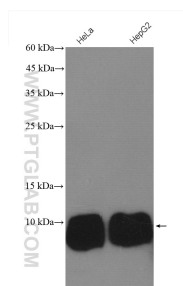
For technical support and original validation data for this product please contact:

T: 1 (888) 4PTGLAB (1-888-478-4522) (toll free in USA), or 1(312) 455-8498 (outside USA)

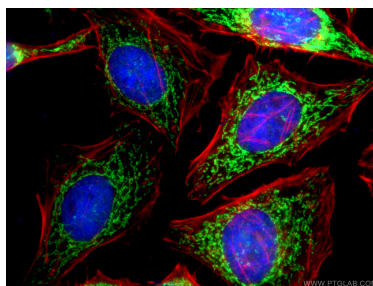
E: proteintech@ptglab.com
W: ptglab.com

This product is exclusively available under Proteintech Group brand and is not available to purchase from any other manufacturer.

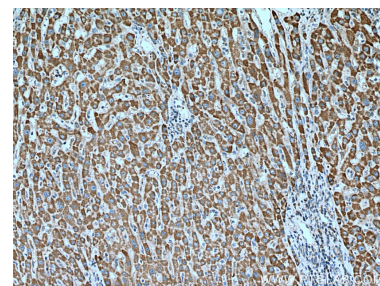
Selected Validation Data



Various lysates were subjected to SDS PAGE followed by western blot with 11973-1-AP (TIMM13 antibody) at dilution of 1:500 incubated at room temperature for 1.5 hours.



Immunofluorescent analysis of (4% PFA) fixed HepG2 cells using 11973-1-AP (TIMM13 antibody), at dilution of 1:200 and CoraLite®488-Conjugated Goat Anti-Rabbit IgG(H+L).



Immunohistochemical analysis of paraffin-embedded human liver cancer tissue slide using 11973-1-AP (TIMM13 antibody) at dilution of 1:200 (under 10x lens). Heat mediated antigen retrieval with Tris-EDTA buffer (pH 9.0).